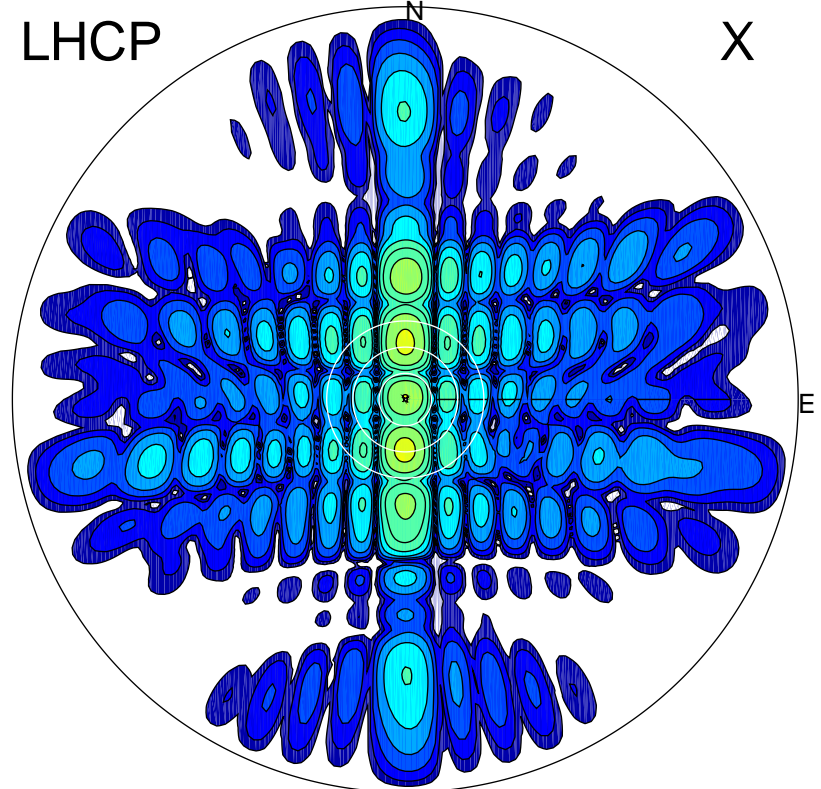


2015-09-28 09:34:00 A1 6.77000000 MHz 604.0 kW

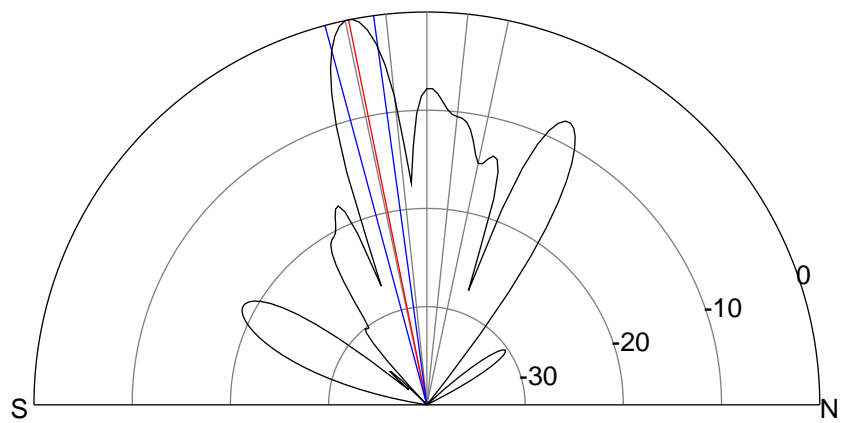
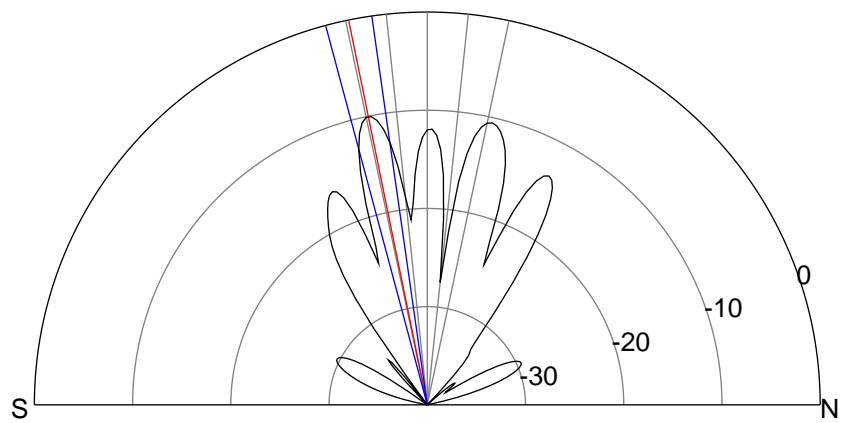
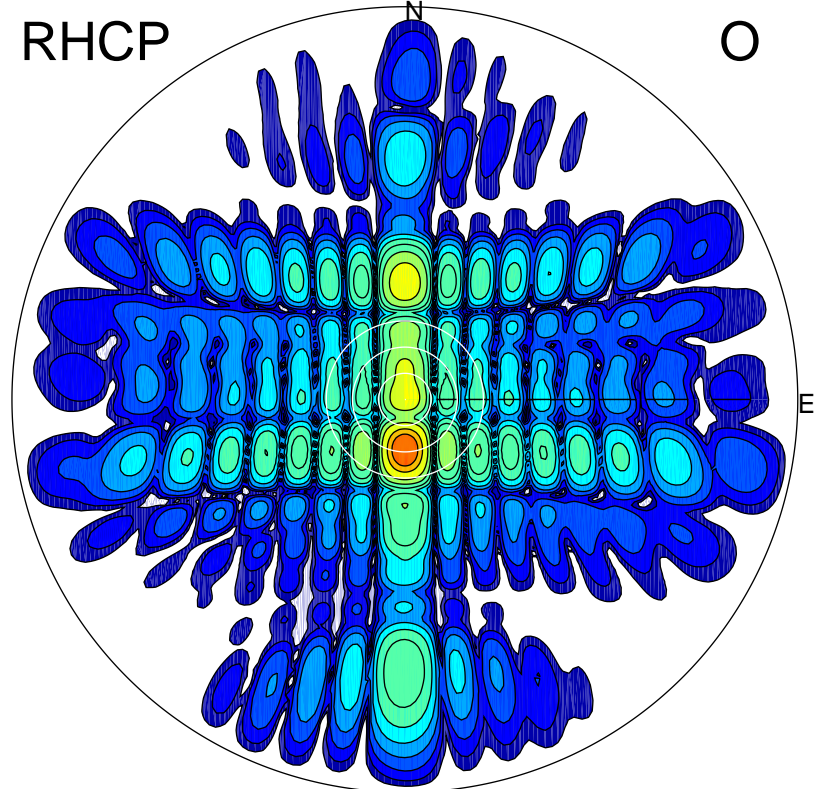
LHCP

X



RHCP

O



### ERP 28.0 MW

Peak gain 16.7 dBi at Az 180 Zen 12  
RHCP gain 26.7 dBi  
N-S peak 16.7 dBi at Zen -11.6  
N-S -3 dB beamwidth 6.9 deg.

### ERP 285.2 MW

Peak gain 26.7 dBi at Az 180 Zen 11  
LHCP gain 16.6 dBi  
N-S peak 26.8 dBi at Zen -11.5  
N-S -3 dB beamwidth 7.2 deg.