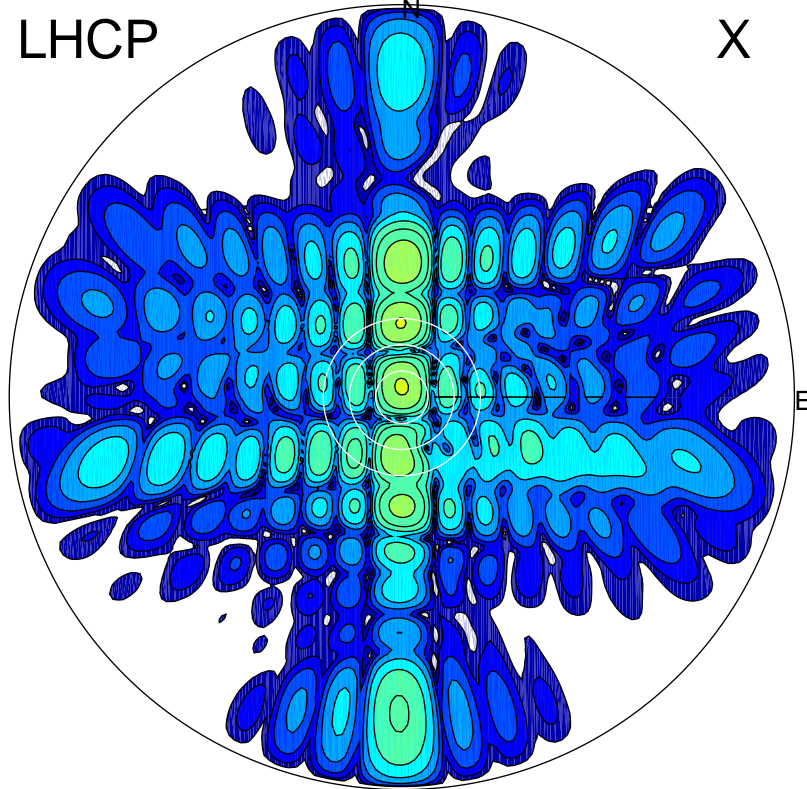


2015-09-28 08:34:00 A1 6.20000000 MHz 600.0 kW

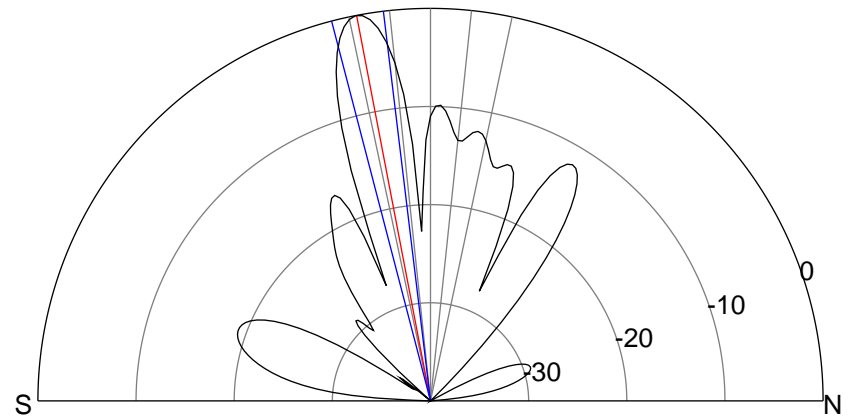
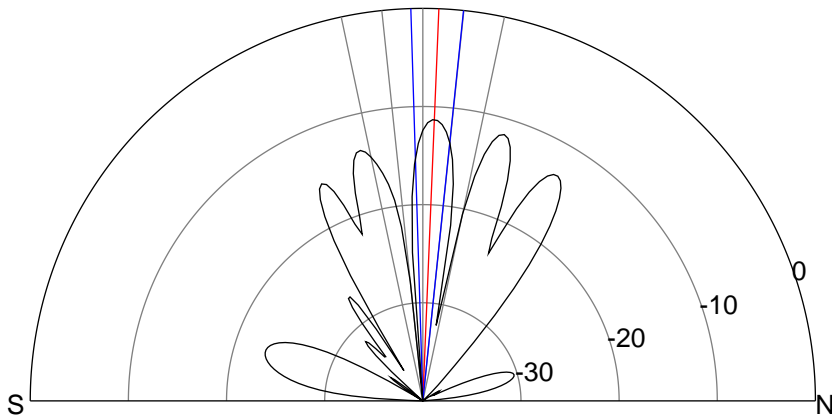
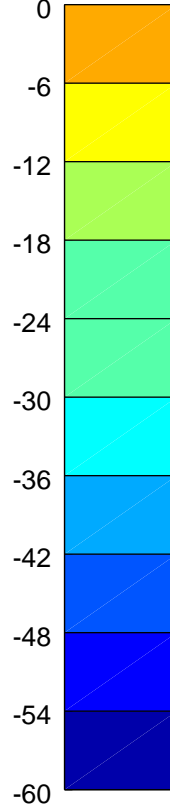
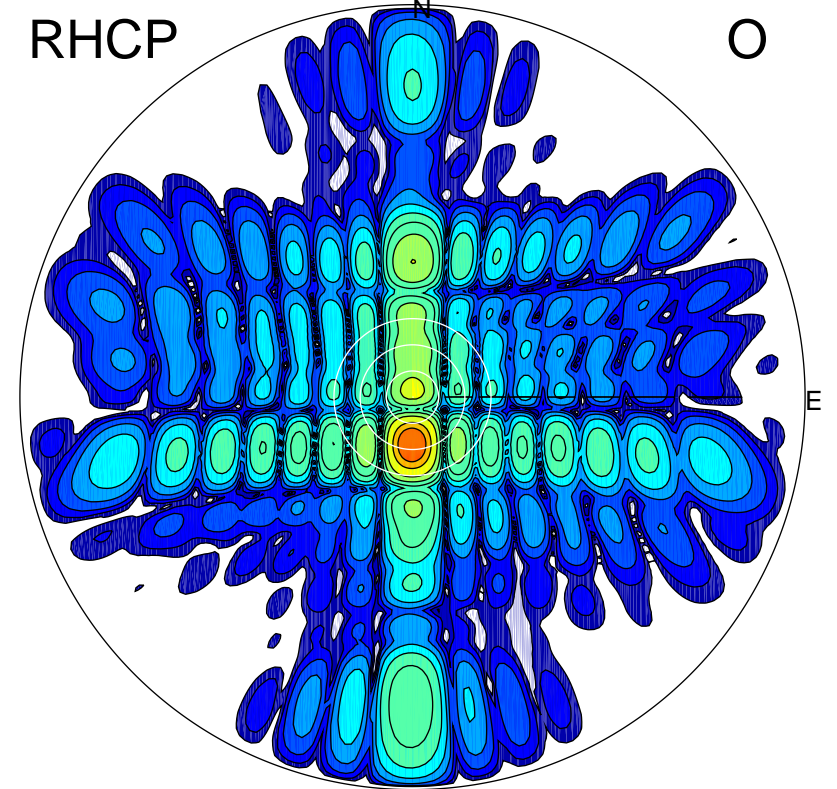
LHCP

X



RHCP

O



ERP 20.8 MW

Peak gain 15.4 dBi at Az 359 Zen 2
RHCP gain 16.9 dBi
N-S peak 15.4 dBi at Zen 2.3
N-S -3 dB beamwidth 7.7 deg.

ERP 282.3 MW

Peak gain 26.7 dBi at Az 181 Zen 11
LHCP gain 11.5 dBi
N-S peak 26.7 dBi at Zen -10.9
N-S -3 dB beamwidth 7.7 deg.