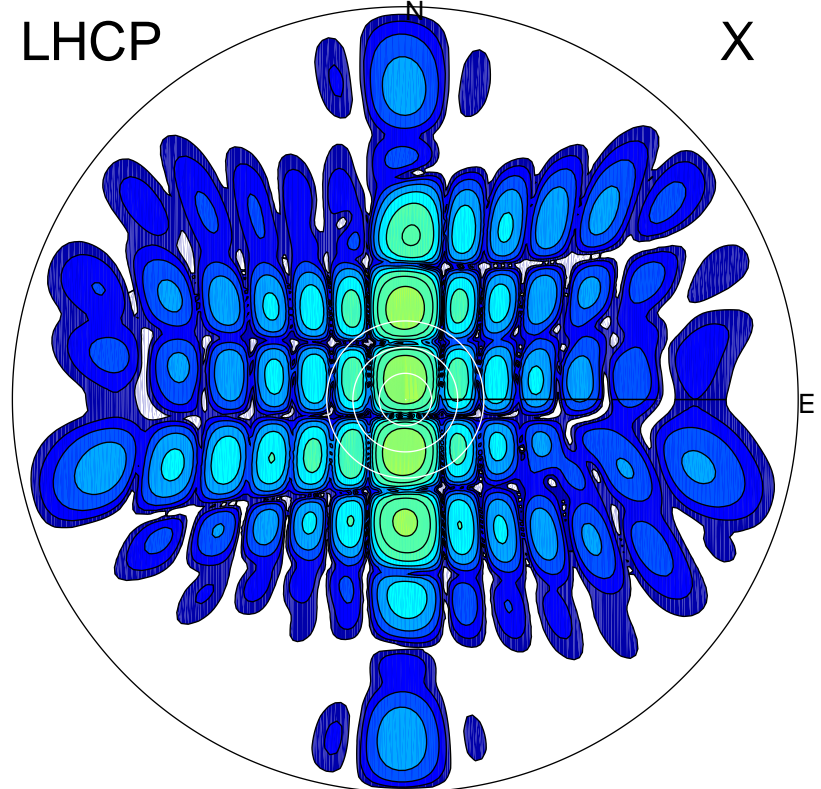


2015-09-28 07:34:00 A1 5.42300000 MHz 639.0 kW

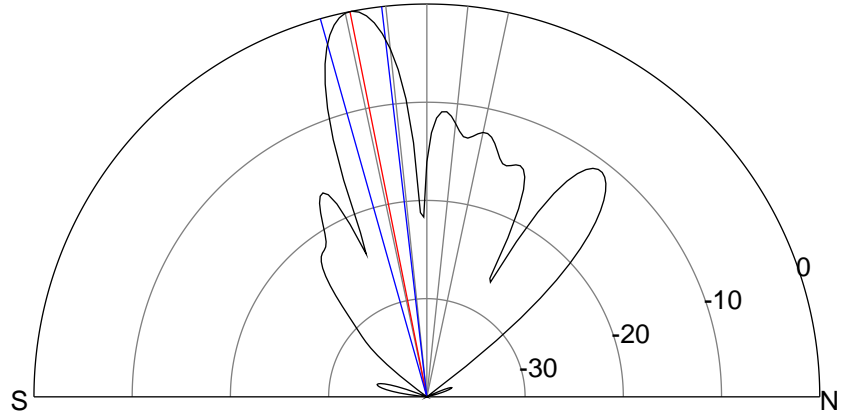
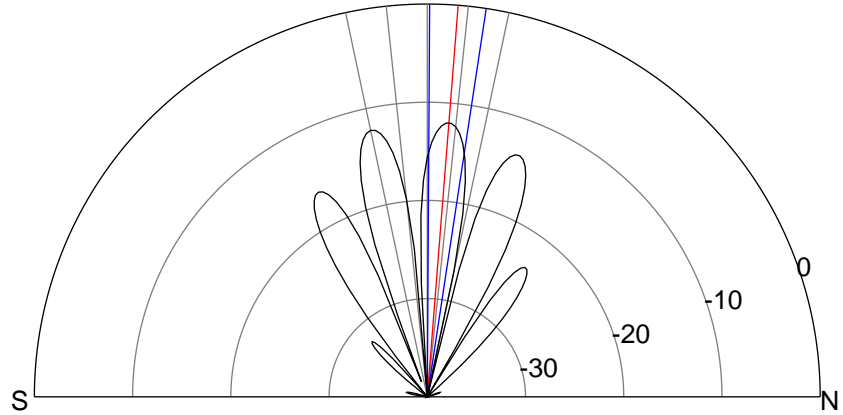
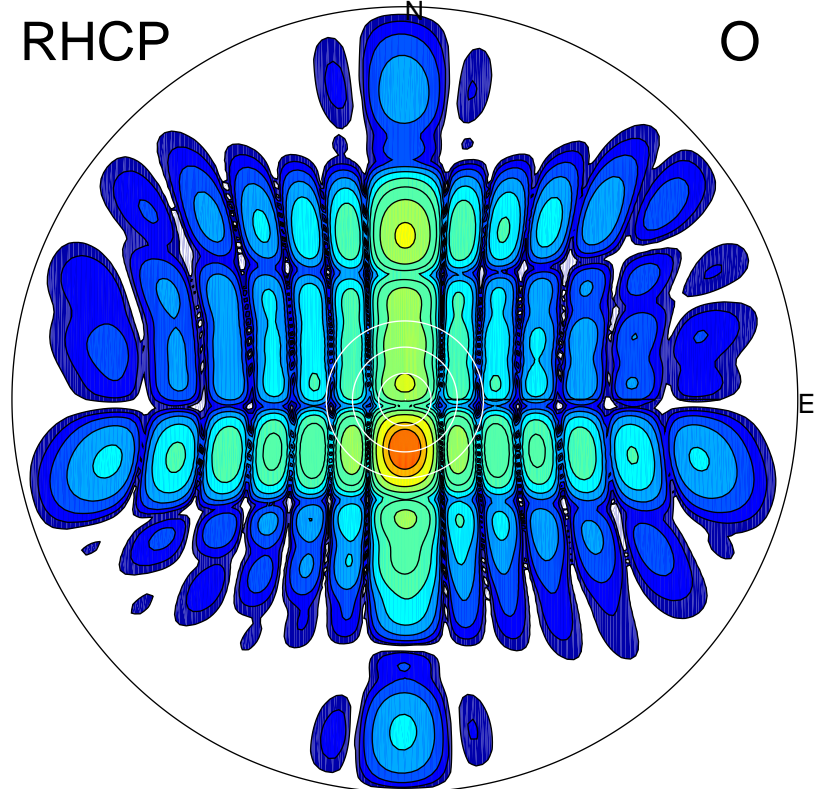
LHCP

X



RHCP

O



ERP 15.2 MW

Peak gain 13.8 dBi at Az 358 Zen 5
RHCP gain 14.5 dBi
N-S peak 13.8 dBi at Zen 4.5
N-S -3 dB beamwidth 8.3 deg.

ERP 243.2 MW

Peak gain 25.8 dBi at Az 180 Zen 11
LHCP gain 13.4 dBi
N-S peak 25.8 dBi at Zen -11.3
N-S -3 dB beamwidth 9.1 deg.