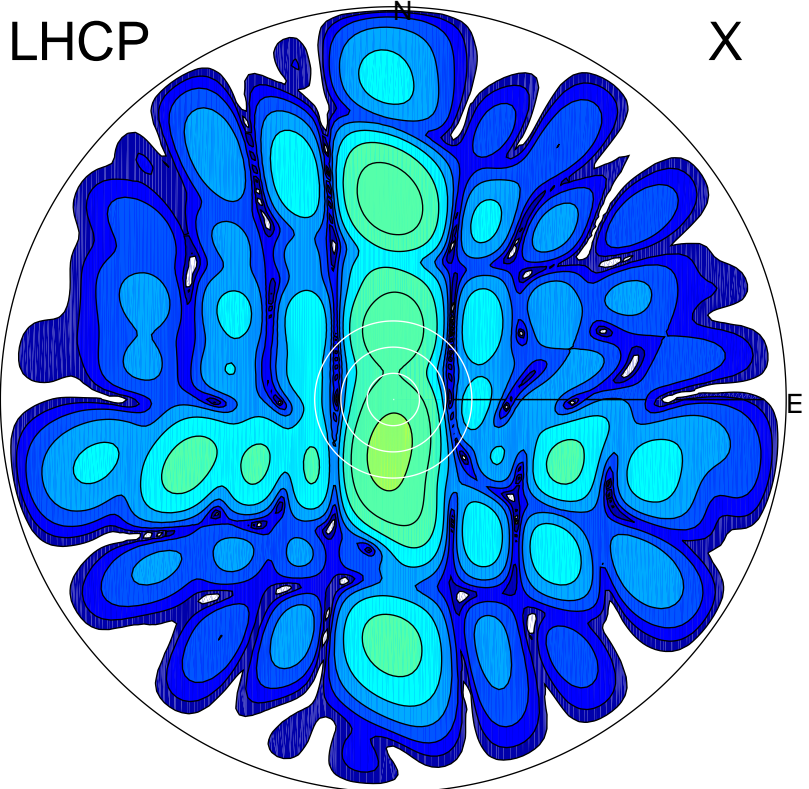


2015-09-28 06:34:00 A2 4.91280000 MHz 858.0 kW

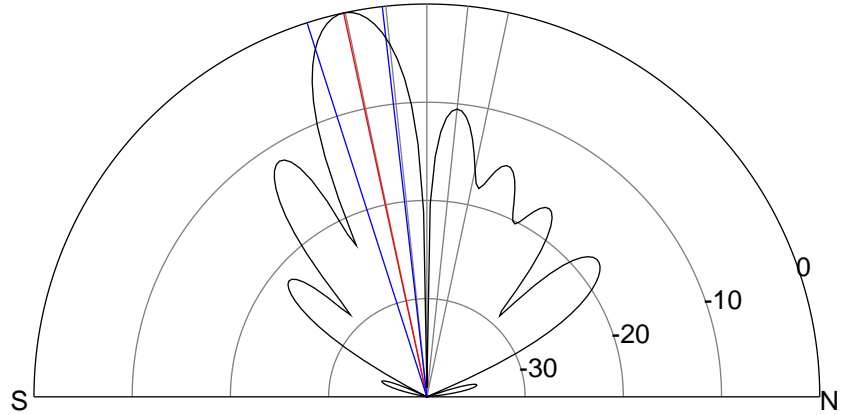
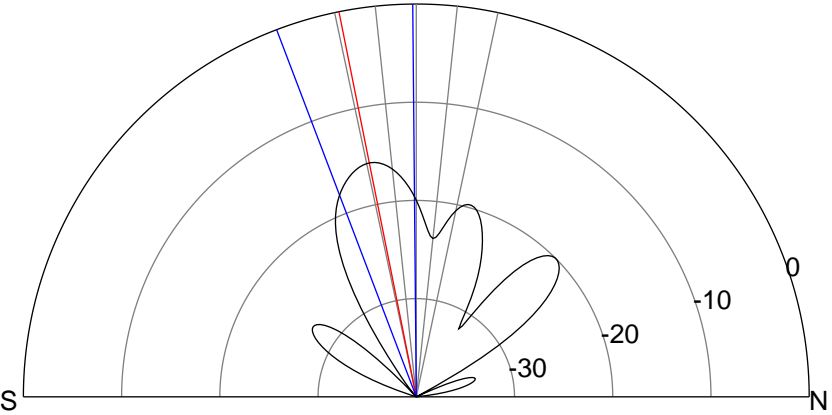
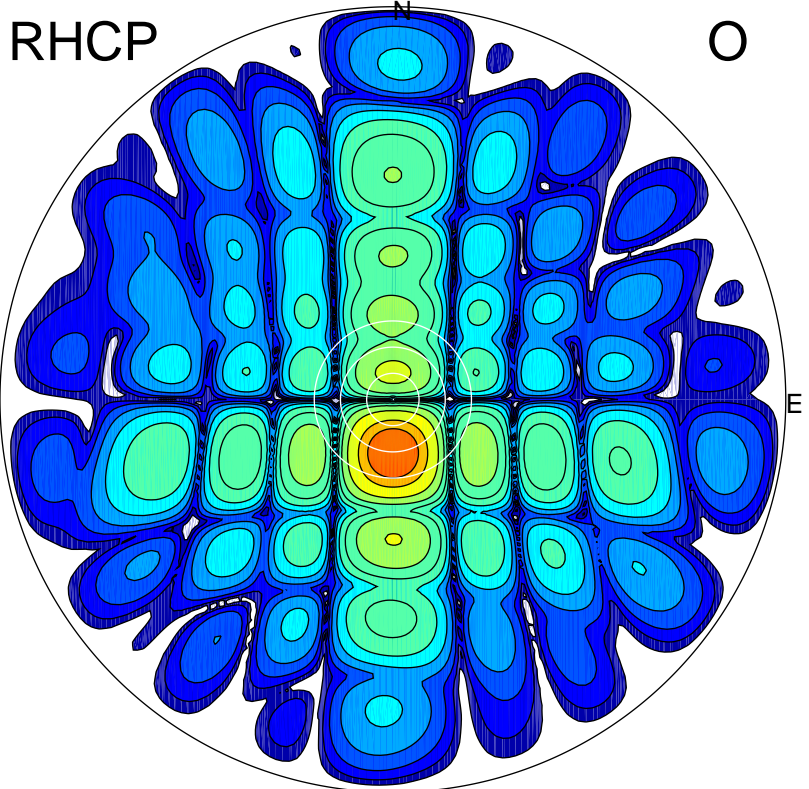
LHCP

X



RHCP

O



ERP 5.2 MW

Peak gain 7.8 dBi at Az 186 Zen 12
RHCP gain 23.3 dBi
N-S peak 7.8 dBi at Zen -11.4
N-S -3 dB beamwidth 20.3 deg.

ERP 191.0 MW

Peak gain 23.5 dBi at Az 180 Zen 12
LHCP gain 7.8 dBi
N-S peak 23.5 dBi at Zen -12.2
N-S -3 dB beamwidth 11.2 deg.