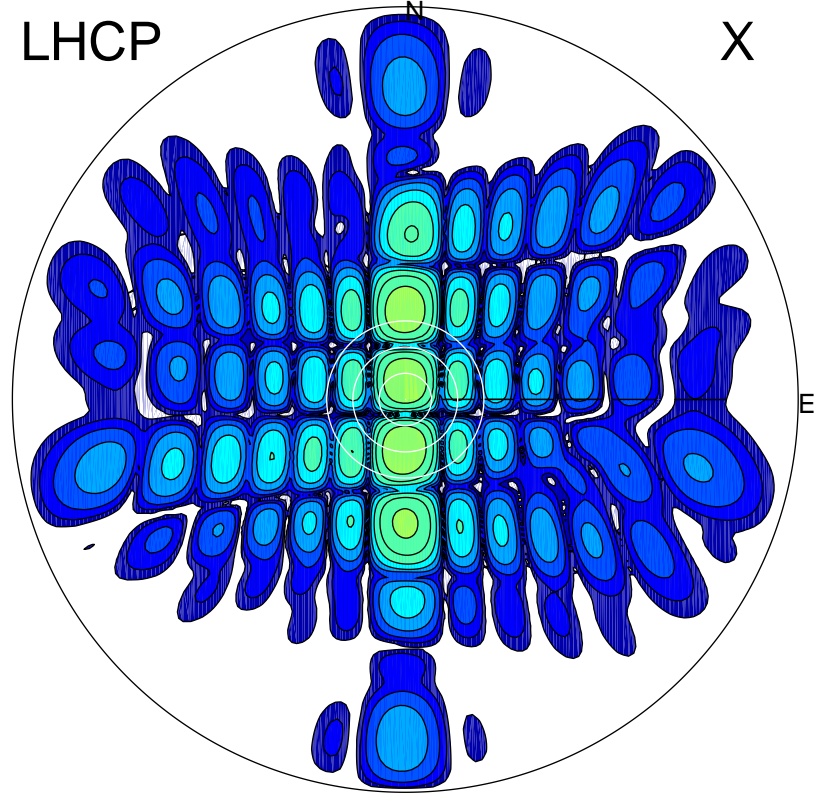


2015-09-25 08:34:00 A1 5.42300000 MHz 637.0 kW

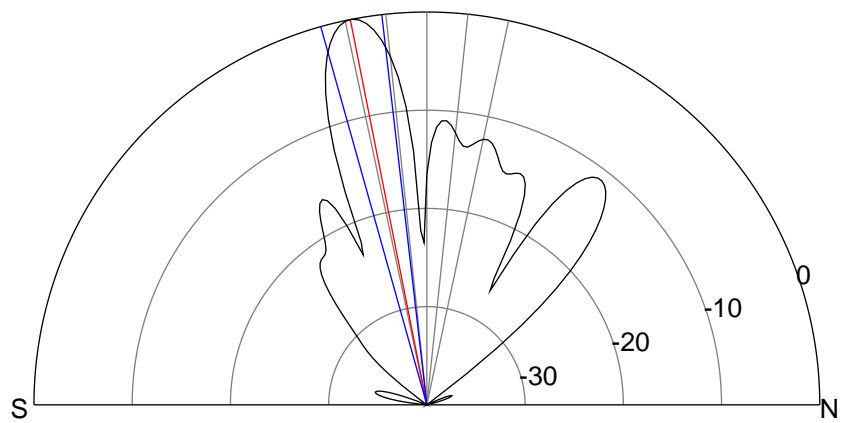
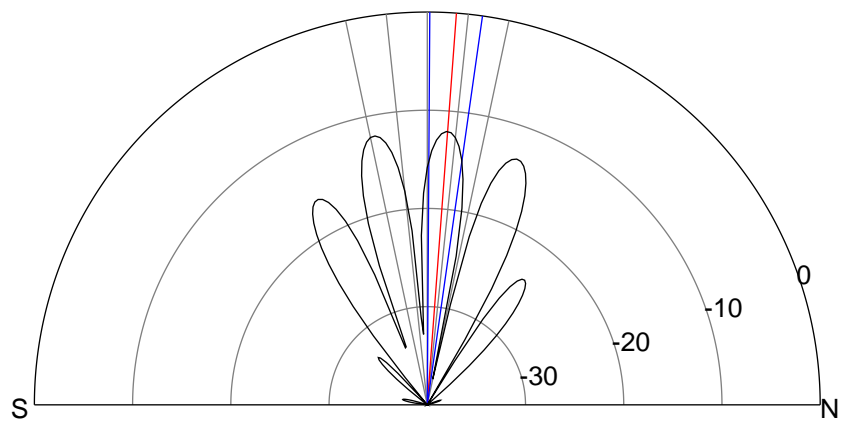
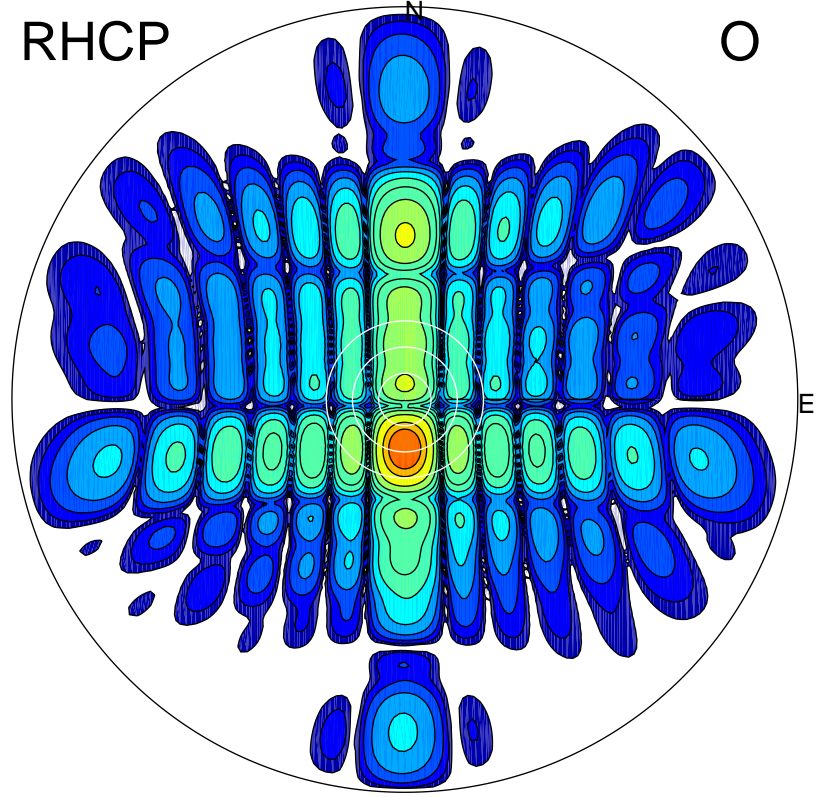
LHCP

X



RHCP

O



### ERP 15.0 MW

Peak gain 13.7 dBi at Az 182 Zen 11  
RHCP gain 25.8 dBi  
N-S peak 13.7 dBi at Zen 4.3  
N-S -3 dB beamwidth 7.7 deg.

### ERP 242.7 MW

Peak gain 25.8 dBi at Az 180 Zen 11  
LHCP gain 13.7 dBi  
N-S peak 25.8 dBi at Zen -11.2  
N-S -3 dB beamwidth 9.1 deg.