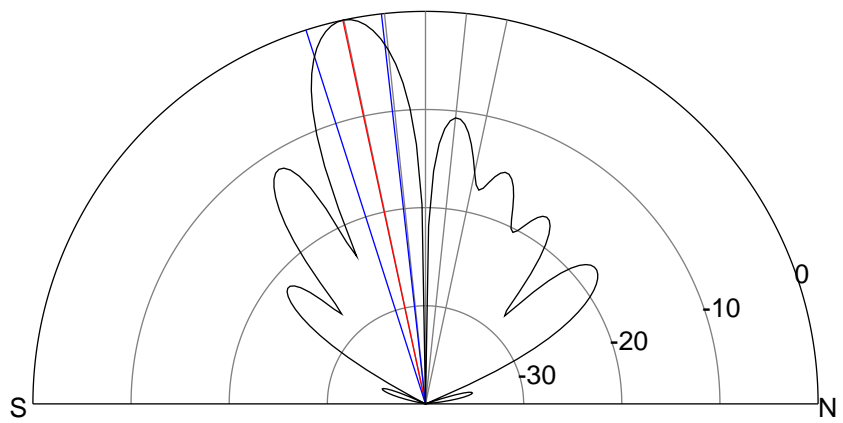
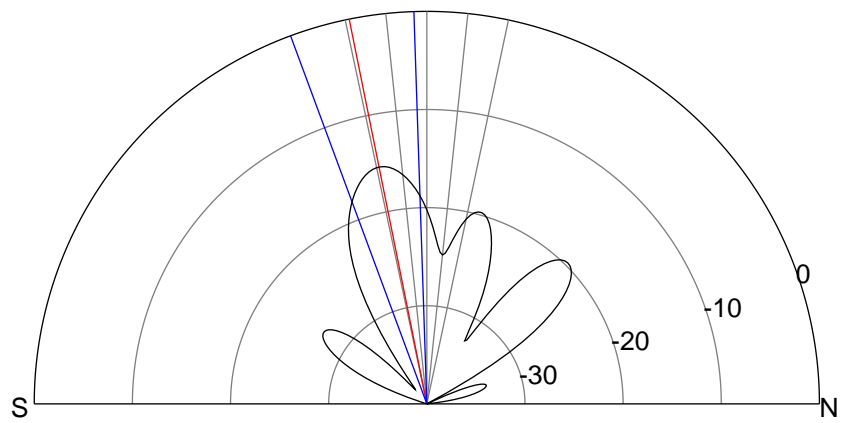
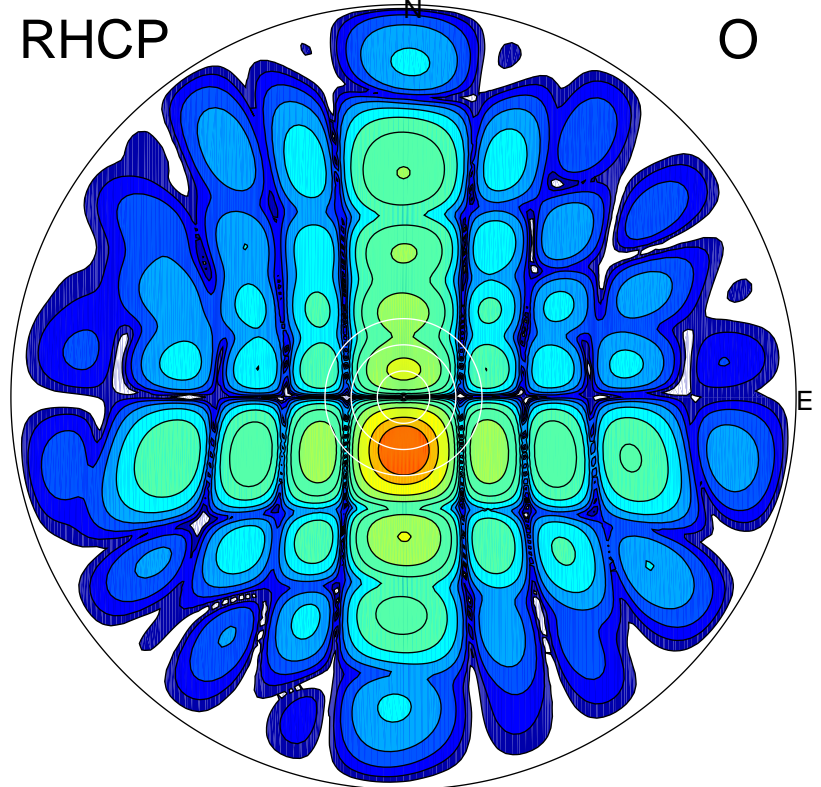
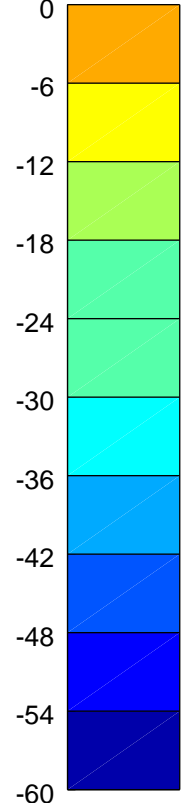
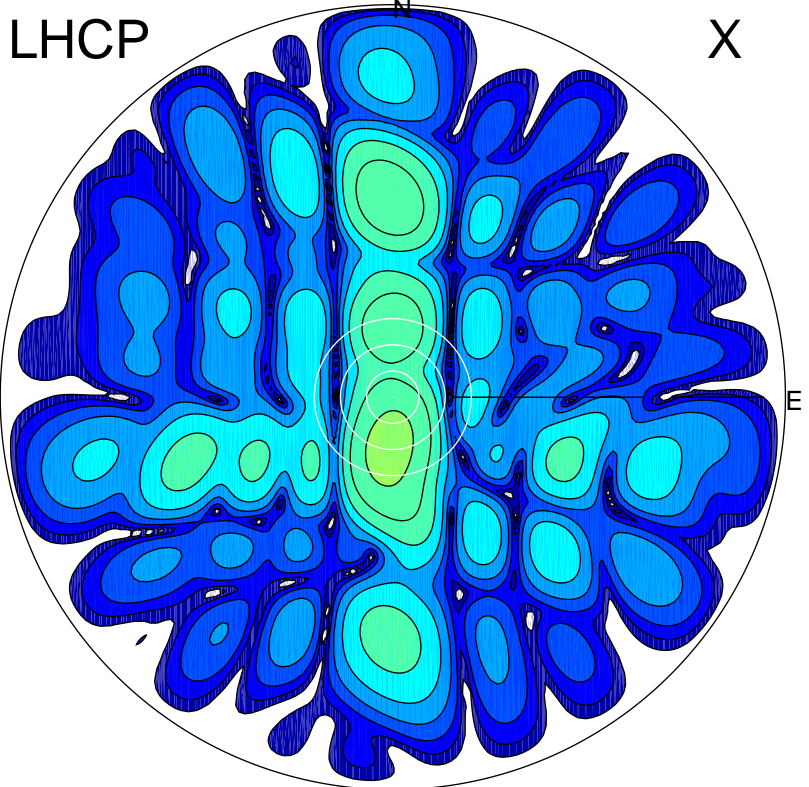


2015-09-25 06:40:00 A2 4.91280000 MHz 845.0 kW



ERP 5.5 MW

Peak gain 8.2 dBi at Az 185 Zen 12
RHCP gain 23.4 dBi
N-S peak 8.1 dBi at Zen -11.4
N-S -3 dB beamwidth 18.4 deg.

ERP 187.8 MW

Peak gain 23.5 dBi at Az 179 Zen 12
LHCP gain 8.0 dBi
N-S peak 23.5 dBi at Zen -12.2
N-S -3 dB beamwidth 11.3 deg.