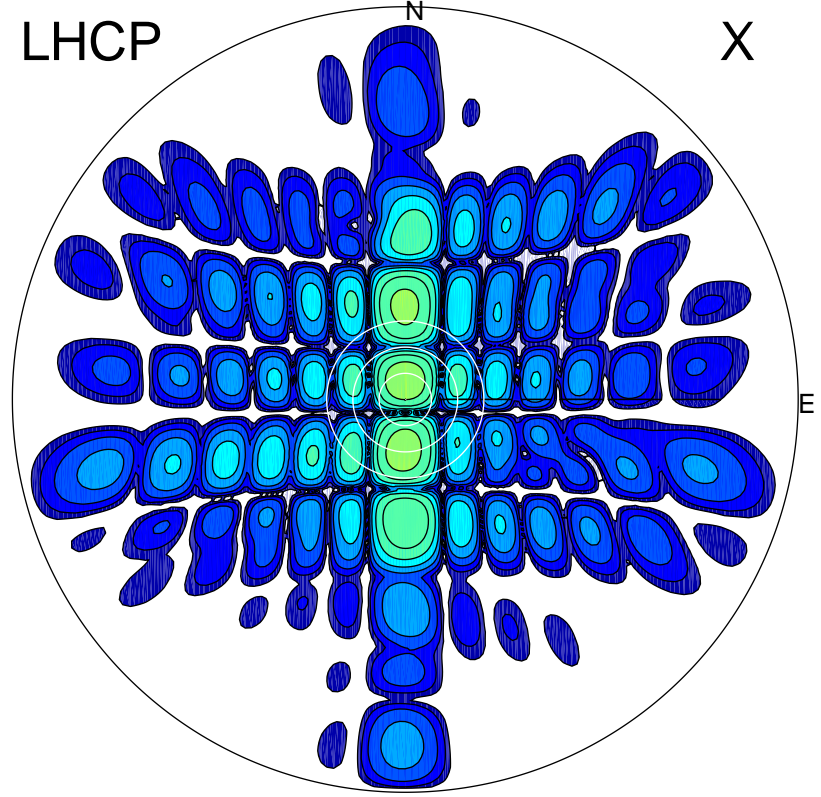


2015-09-24 09:40:00 A1 5.42300000 MHz 728.0 kW

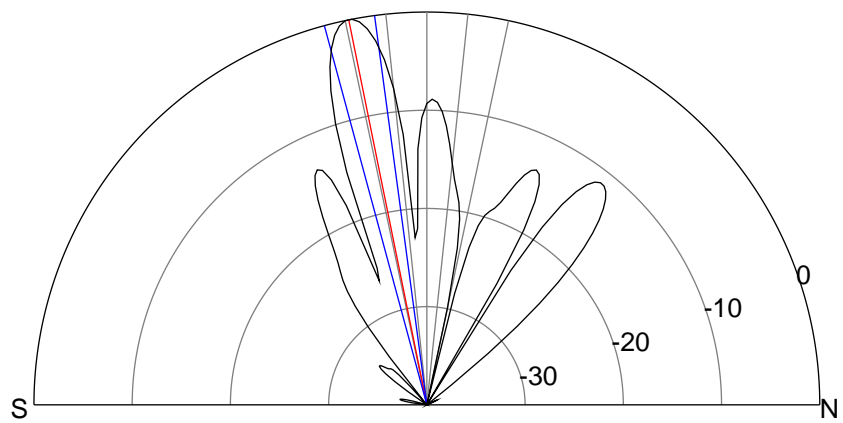
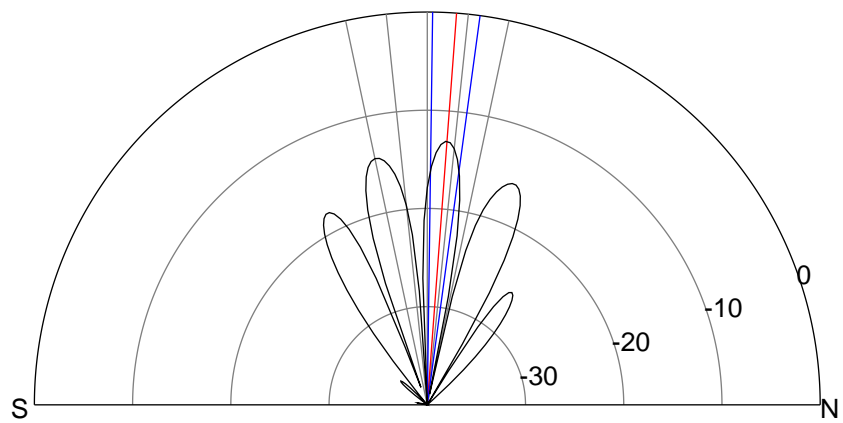
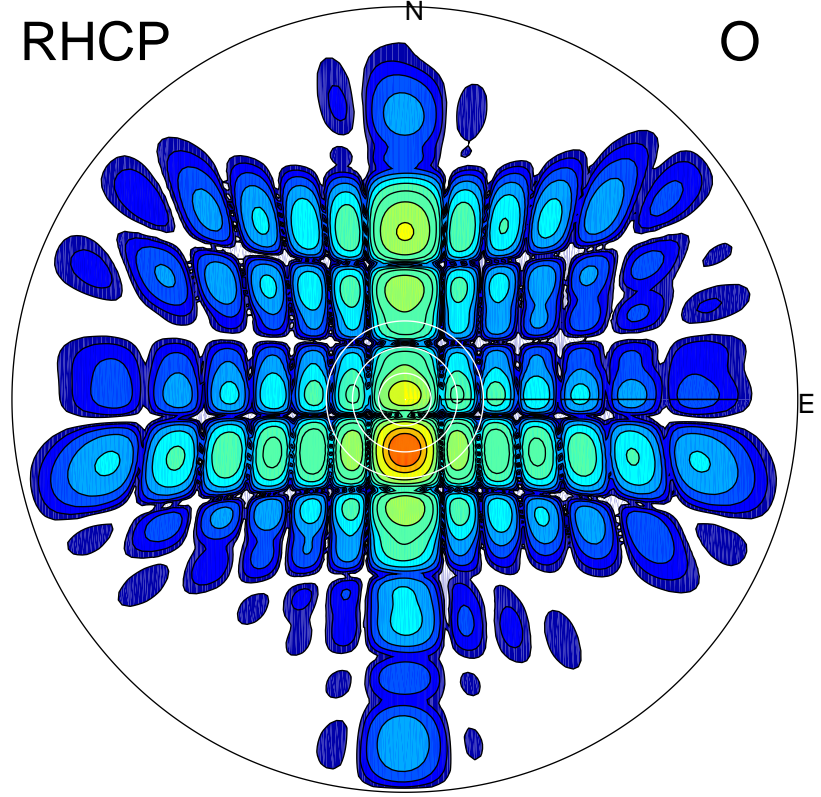
LHCP

X



RHCP

O



ERP 16.5 MW

Peak gain 13.6 dBi at Az 359 Zen 4
RHCP gain 15.1 dBi
N-S peak 13.6 dBi at Zen 4.3
N-S -3 dB beamwidth 6.9 deg.

ERP 337.7 MW

Peak gain 26.7 dBi at Az 180 Zen 11
LHCP gain 12.2 dBi
N-S peak 26.7 dBi at Zen -11.5
N-S -3 dB beamwidth 7.5 deg.