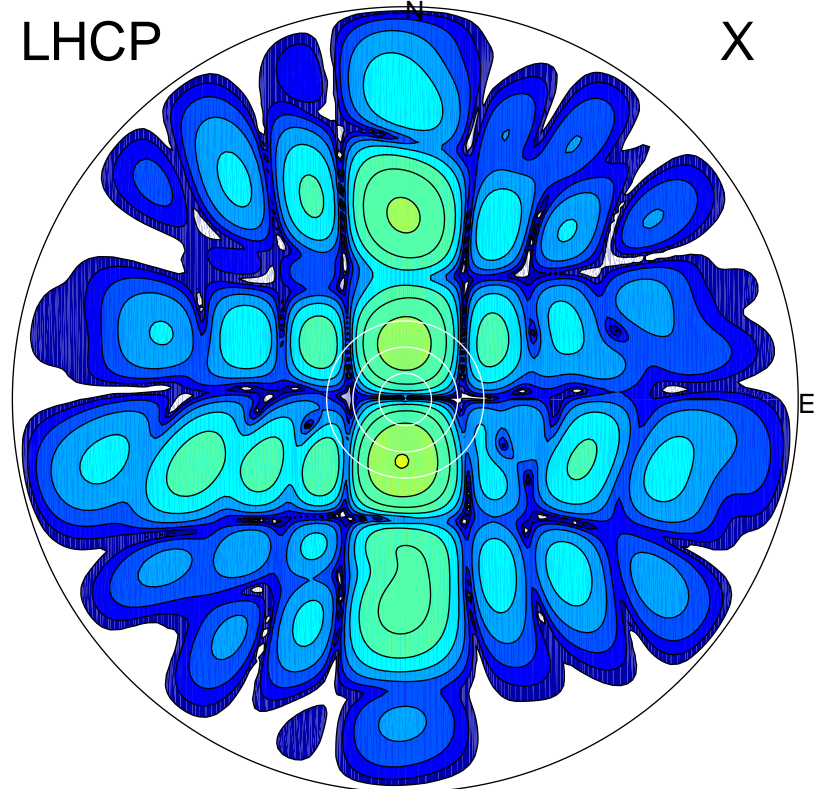


2015-09-24 07:50:00 A2 4.91280000 MHz 777.0 kW

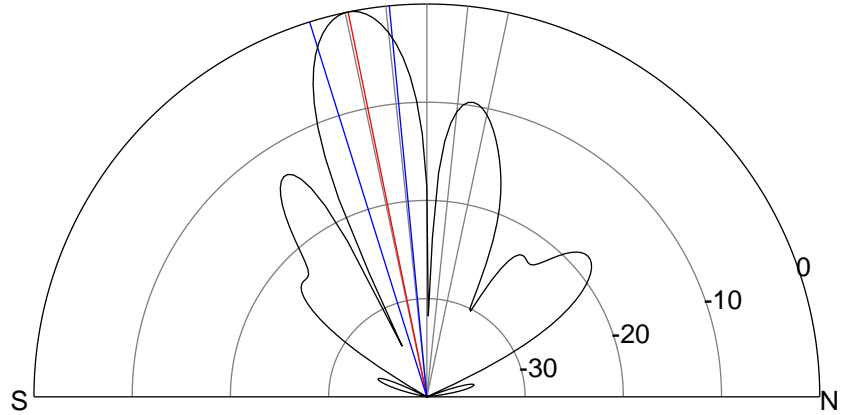
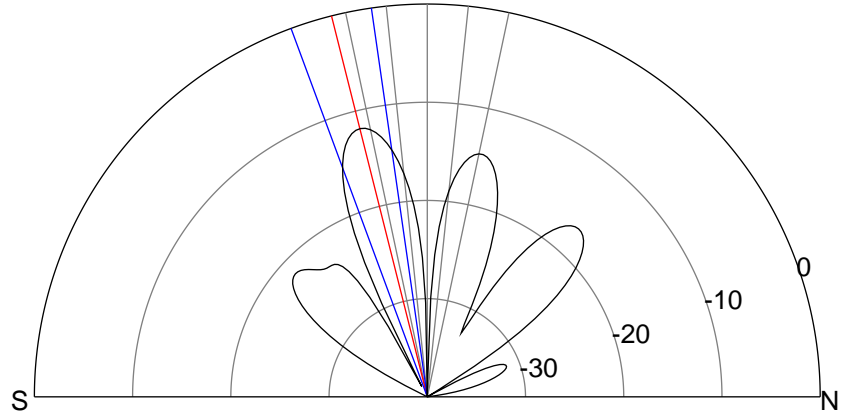
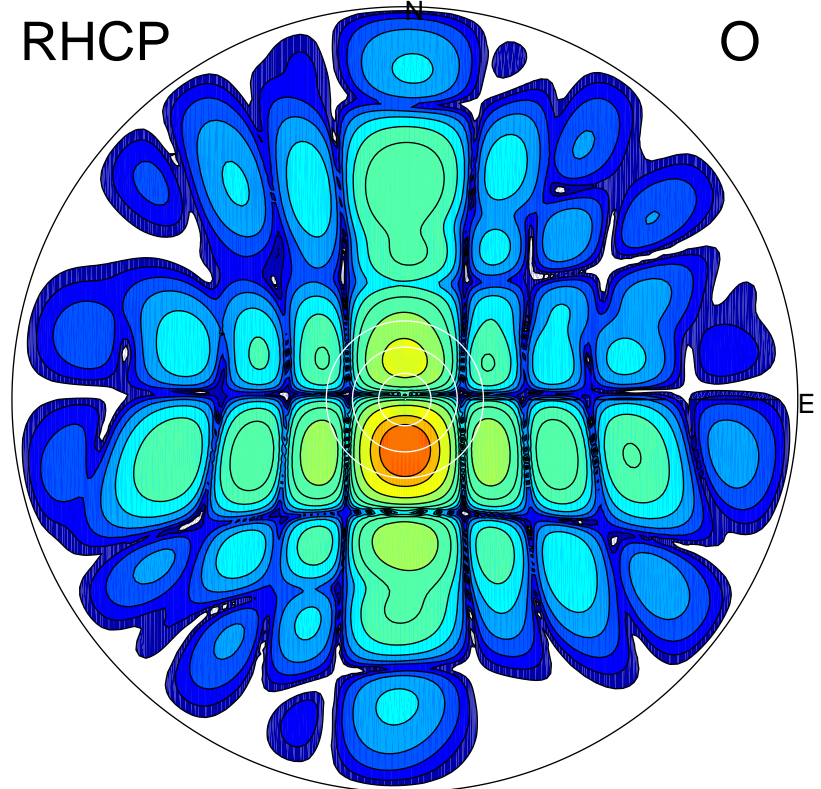
LHCP

X



RHCP

O



ERP 10.5 MW

Peak gain 11.3 dBi at Az 183 Zen 14
RHCP gain 22.6 dBi
N-S peak 11.2 dBi at Zen -14.1
N-S -3 dB beamwidth 12.1 deg.

ERP 157.8 MW

Peak gain 23.1 dBi at Az 179 Zen 12
LHCP gain 10.9 dBi
N-S peak 23.1 dBi at Zen -11.6
N-S -3 dB beamwidth 11.9 deg.