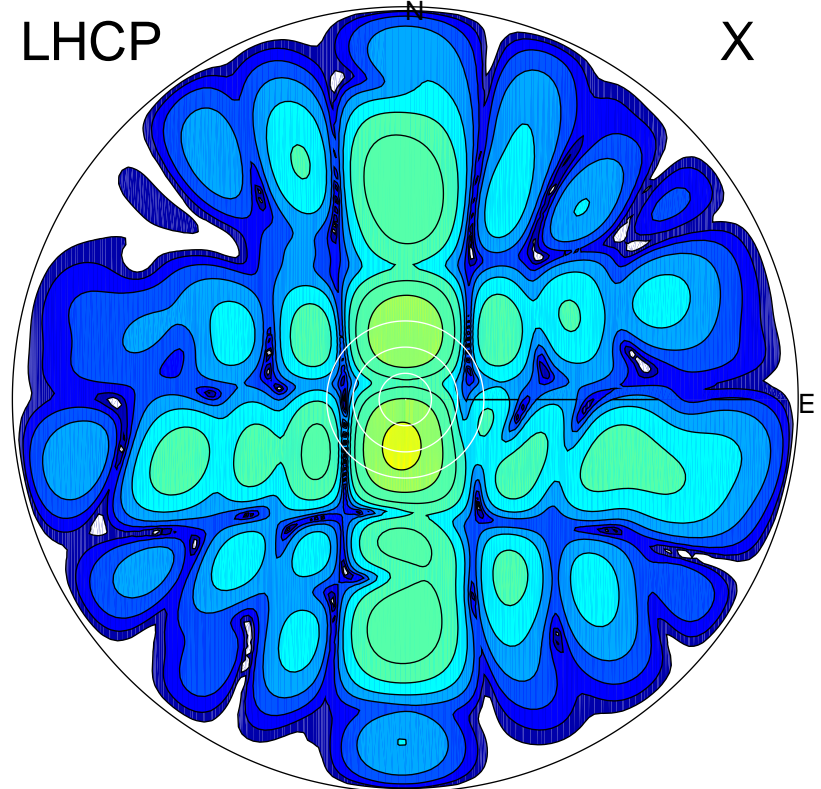


2015-09-24 06:49:00 A2 4.54400000 MHz 795.0 kW

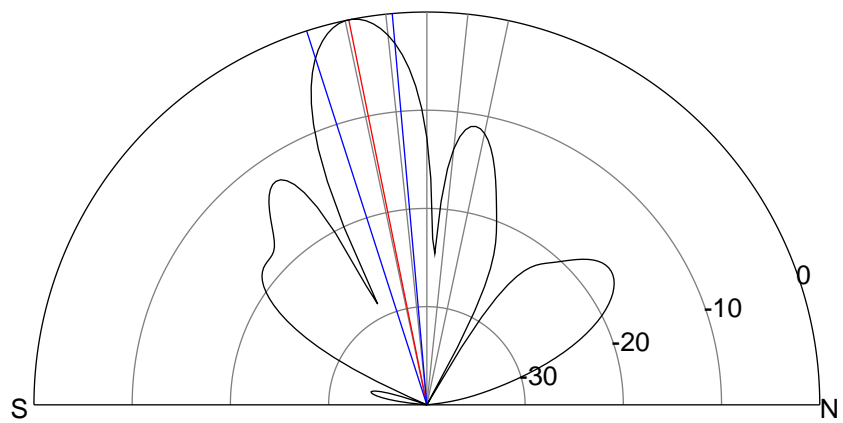
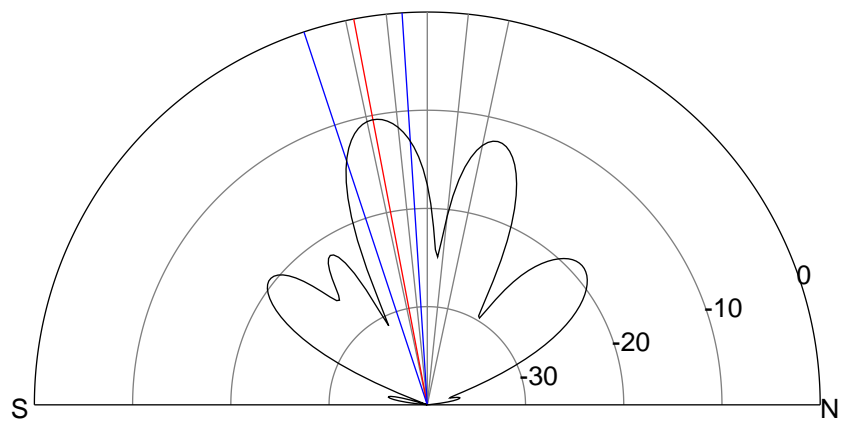
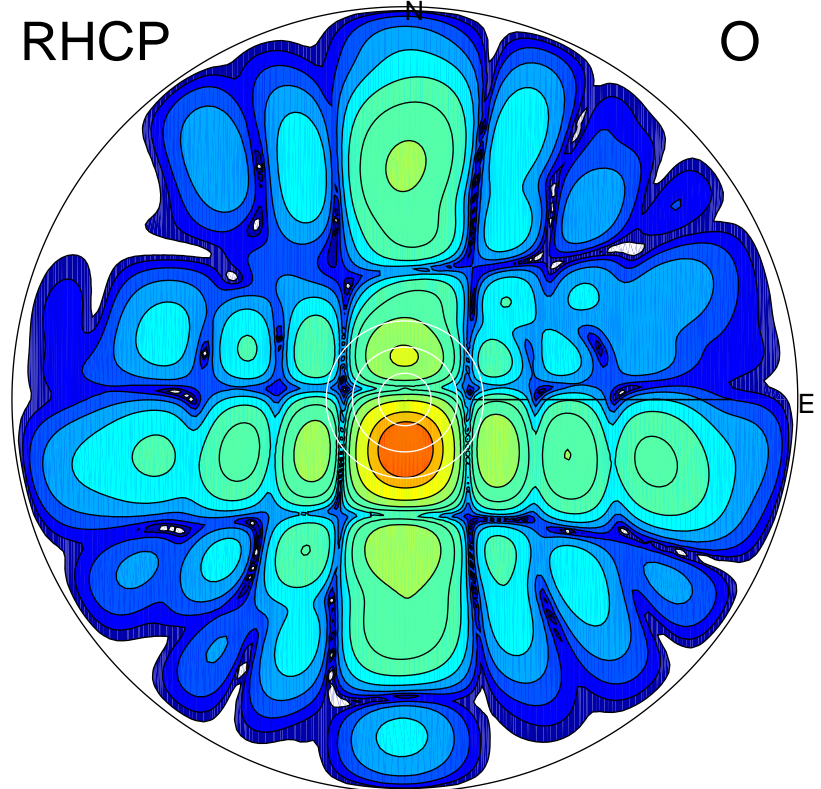
LHCP

X



RHCP

O



### ERP 12.2 MW

Peak gain 11.9 dBi at Az 184 Zen 11  
RHCP gain 22.2 dBi  
N-S peak 11.8 dBi at Zen -10.8  
N-S -3 dB beamwidth 14.6 deg.

### ERP 133.1 MW

Peak gain 22.2 dBi at Az 178 Zen 11  
LHCP gain 11.7 dBi  
N-S peak 22.2 dBi at Zen -11.5  
N-S -3 dB beamwidth 12.8 deg.