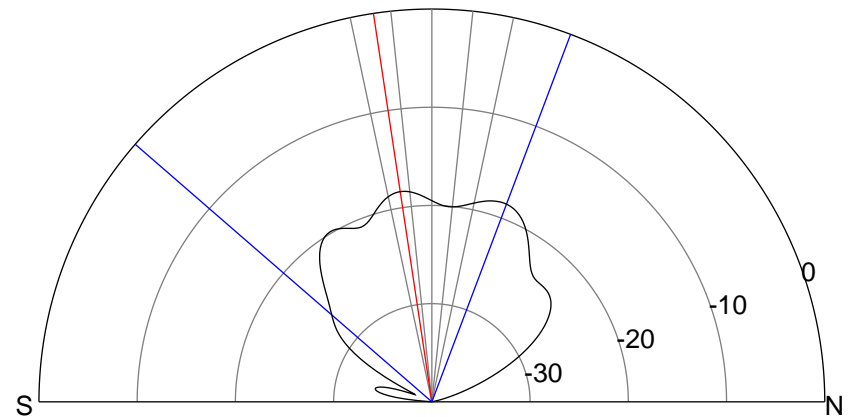
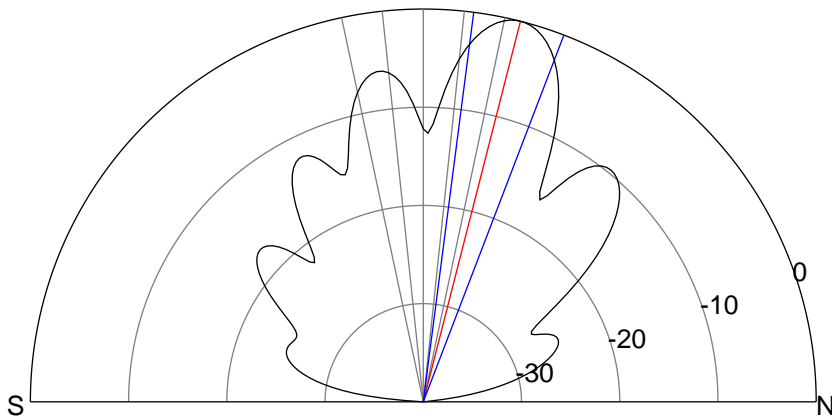
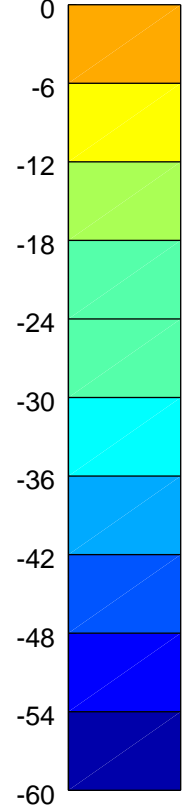
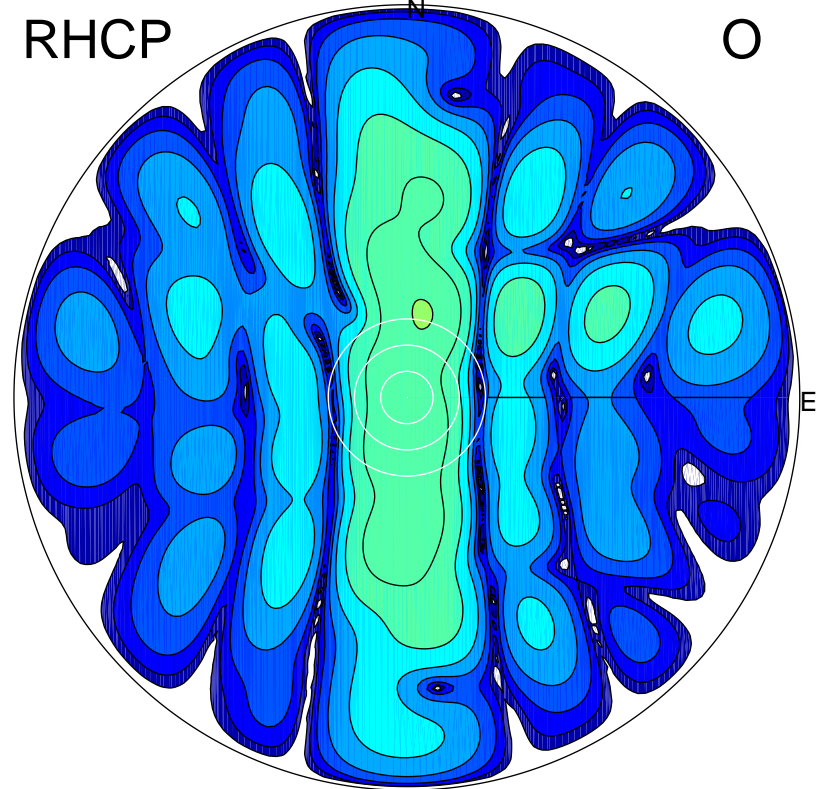
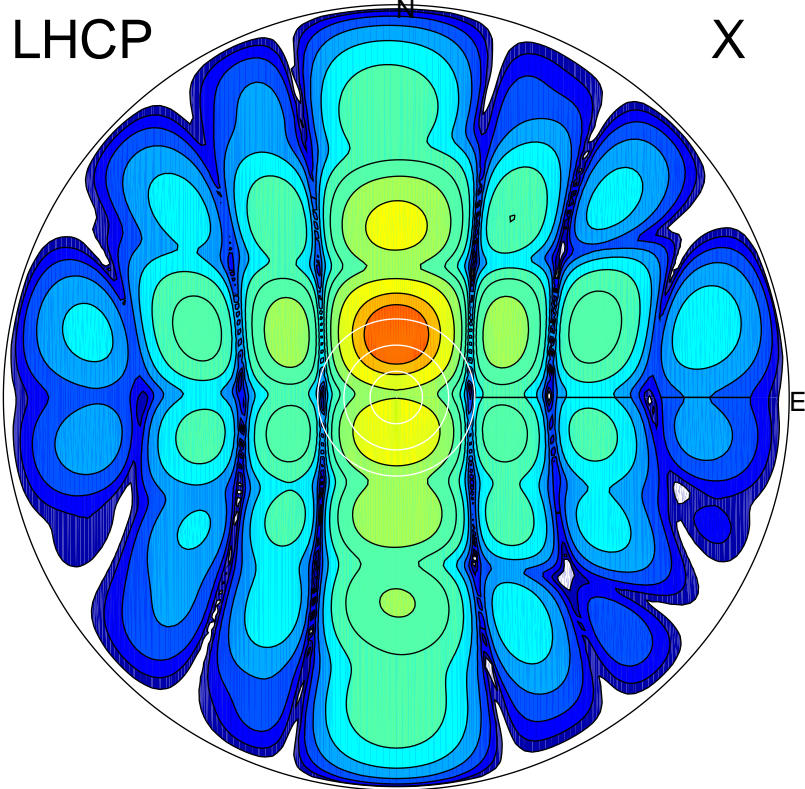


2015-04-29 08:01:00 A3 5.42300000 MHz 699.0 kW



ERP 88.4 MW

Peak gain 21.0 dBi at Az 0 Zen 14
RHCP gain 2.0 dBi
N-S peak 21.0 dBi at Zen 14.3
N-S -3 dB beamwidth 13.6 deg.

ERP 1.5 MW

Peak gain 3.4 dBi at Az 11 Zen 19
LHCP gain 19.2 dBi
N-S peak 2.7 dBi at Zen -8.6
N-S -3 dB beamwidth 69.7 deg.