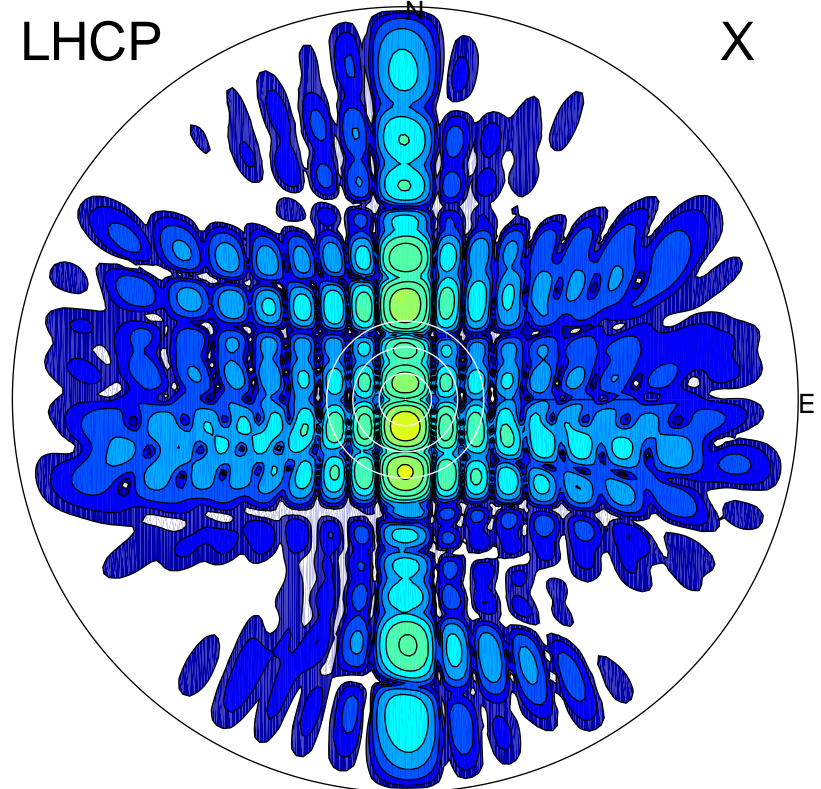


2015-04-27 11:30:05 A1 7.00000000 MHz 654.0 kW

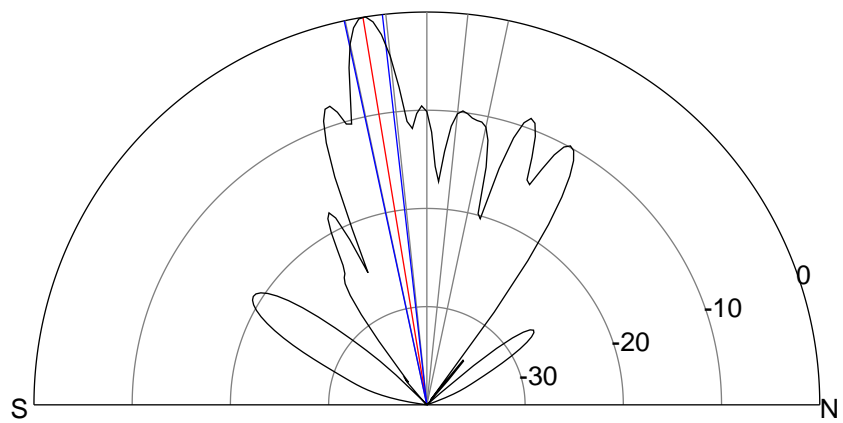
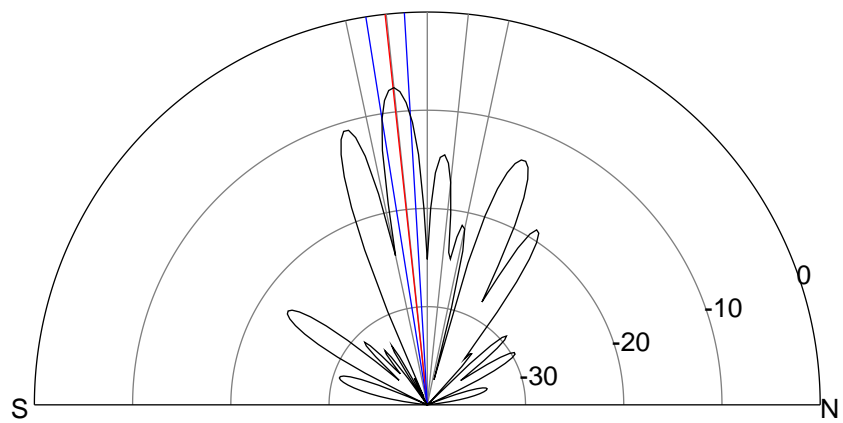
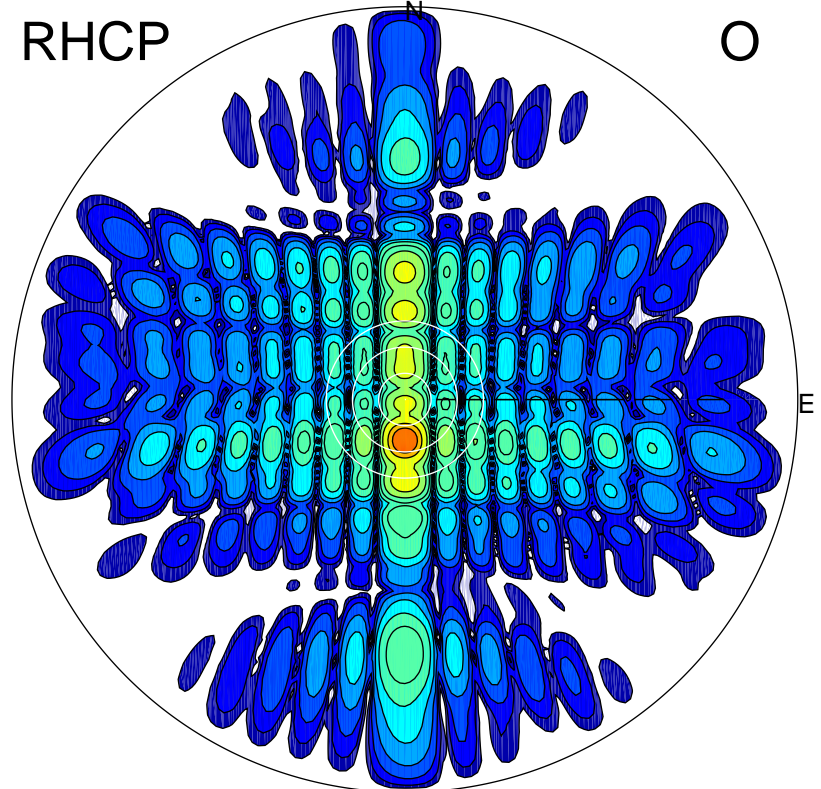
LHCP

X



RHCP

O



ERP 63.4 MW

Peak gain 19.9 dBi at Az 180 Zen 6
RHCP gain 23.1 dBi
N-S peak 19.9 dBi at Zen -6.2
N-S -3 dB beamwidth 5.7 deg.

ERP 358.5 MW

Peak gain 27.4 dBi at Az 180 Zen 9
LHCP gain 16.9 dBi
N-S peak 27.4 dBi at Zen -9.4
N-S -3 dB beamwidth 5.6 deg.