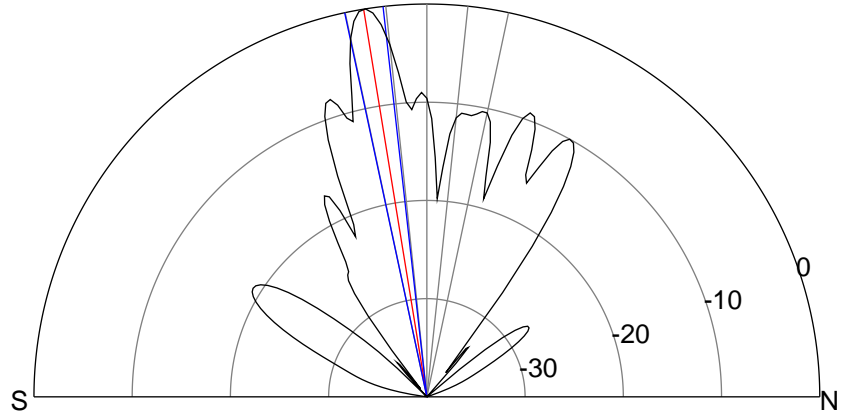
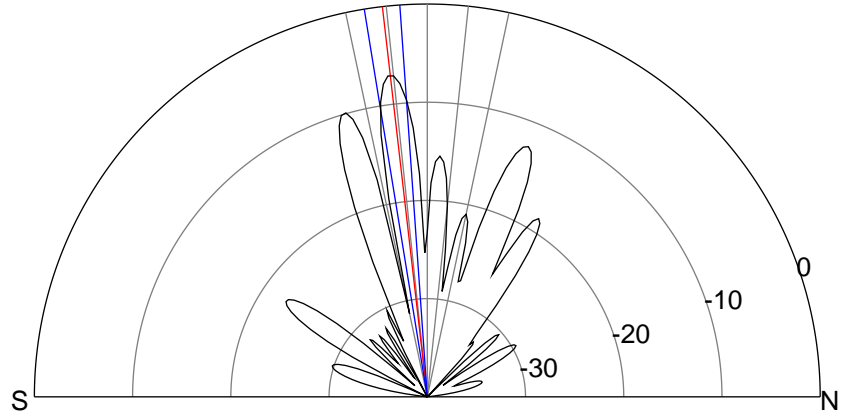
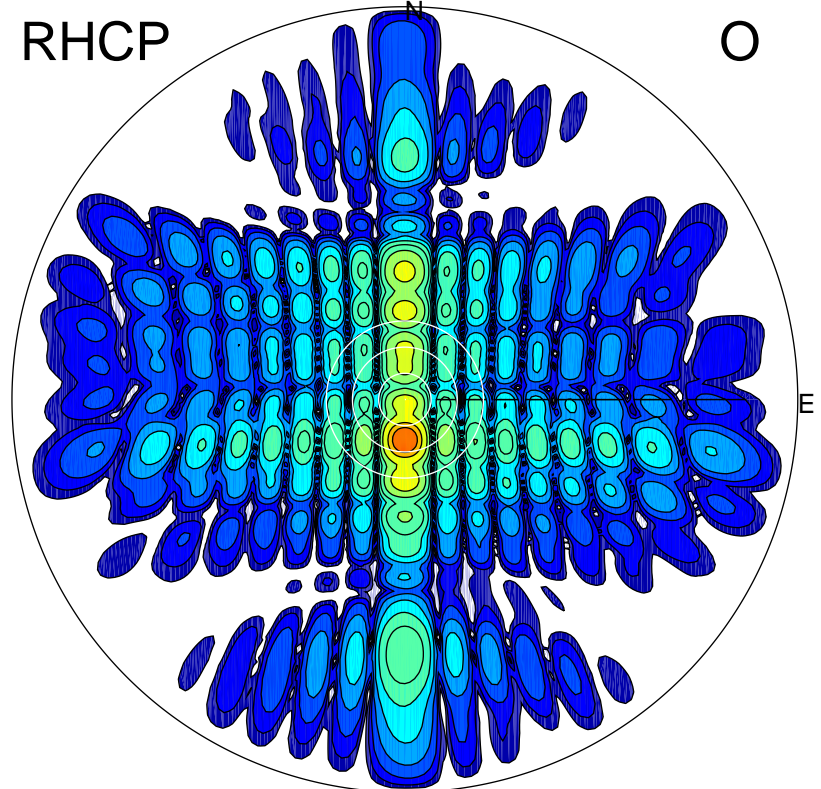
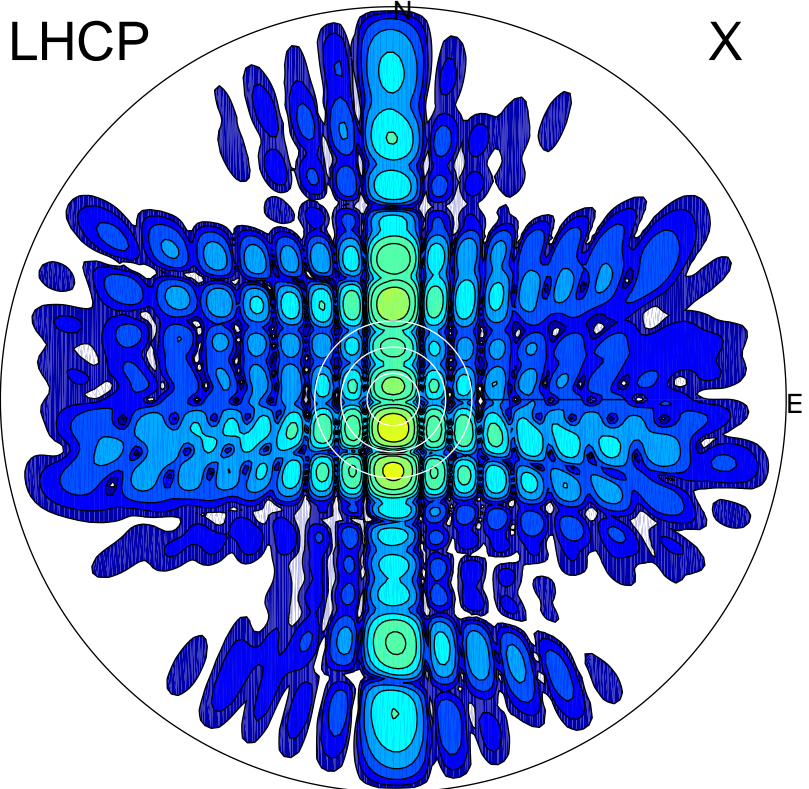


2015-04-24 10:30:05 A1 7.00000000 MHz 642.0 kW



### ERP 68.7 MW

Peak gain 20.3 dBi at Az 180 Zen 7  
RHCP gain 25.6 dBi  
N-S peak 20.4 dBi at Zen -6.6  
N-S -3 dB beamwidth 5.2 deg.

### ERP 350.9 MW

Peak gain 27.4 dBi at Az 180 Zen 9  
LHCP gain 17.8 dBi  
N-S peak 27.4 dBi at Zen -9.3  
N-S -3 dB beamwidth 5.7 deg.