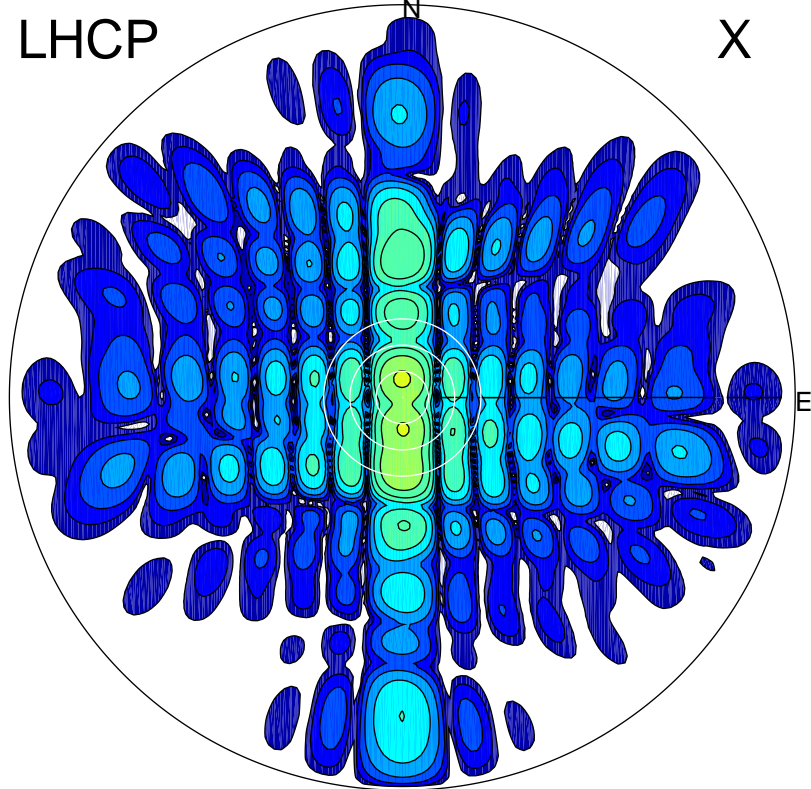


2015-04-24 10:00:05 A1 5.60000000 MHz 584.0 kW

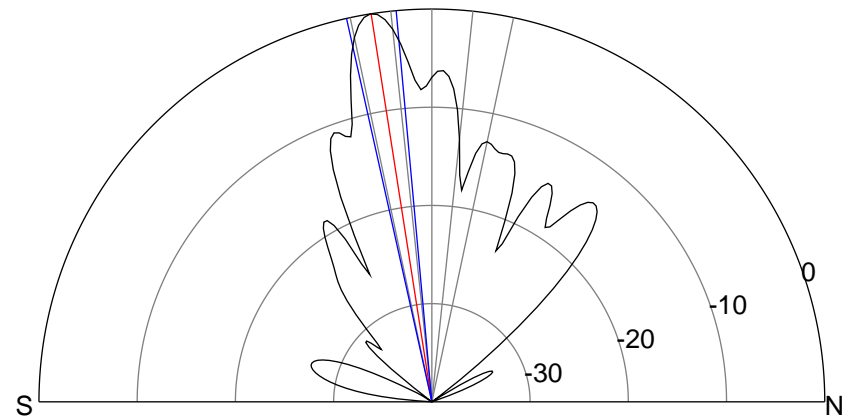
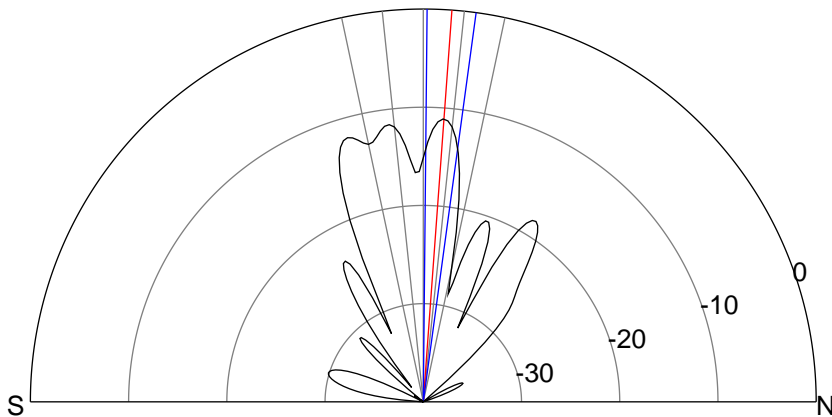
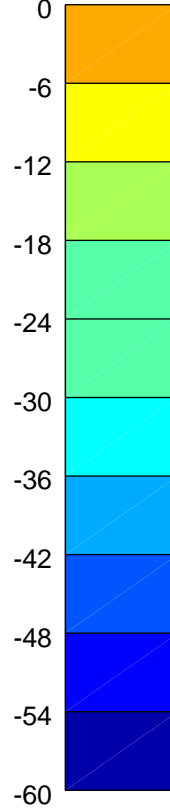
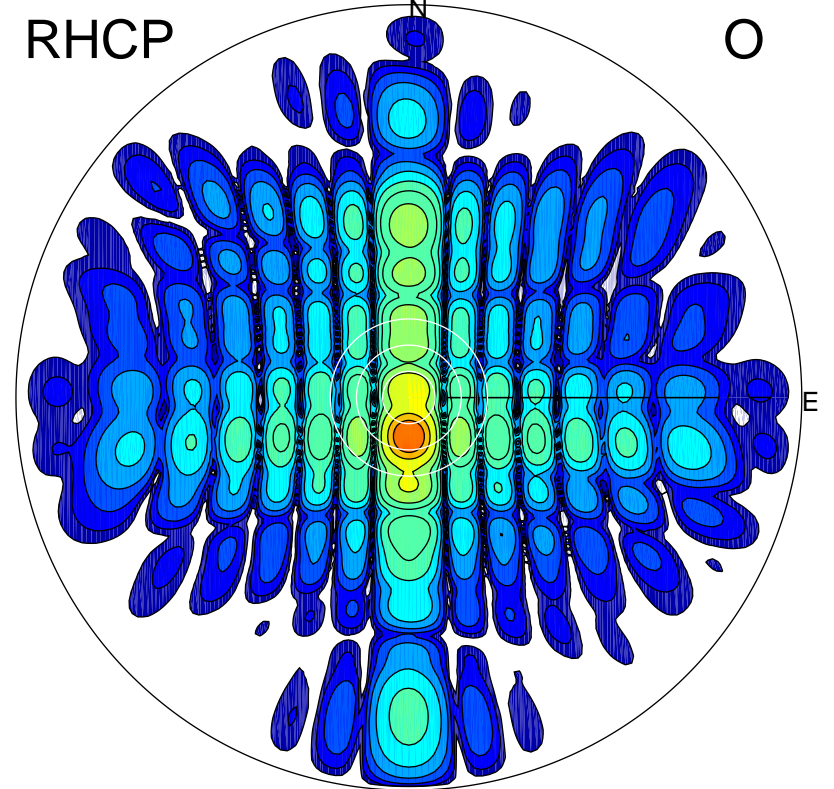
LHCP

X



RHCP

O



ERP 18.4 MW

Peak gain 15.0 dBi at Az 0 Zen 4
RHCP gain 18.1 dBi
N-S peak 15.0 dBi at Zen 4.2
N-S -3 dB beamwidth 7.2 deg.

ERP 238.9 MW

Peak gain 26.1 dBi at Az 181 Zen 9
LHCP gain 14.0 dBi
N-S peak 26.1 dBi at Zen -8.9
N-S -3 dB beamwidth 7.3 deg.