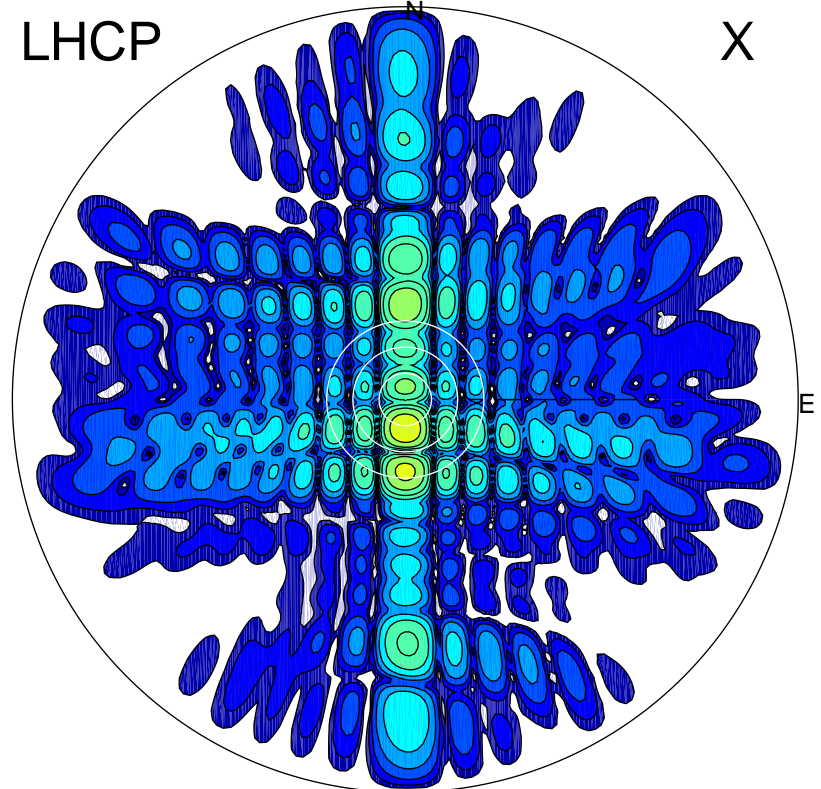


2015-04-23 11:30:05 A1 7.00000000 MHz 623.0 kW

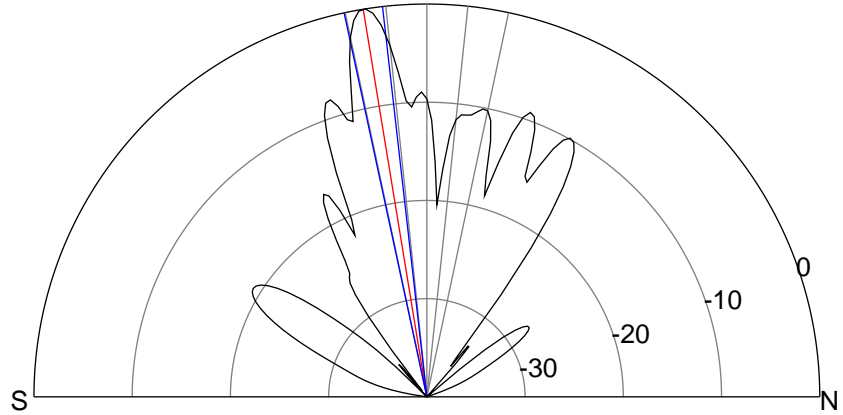
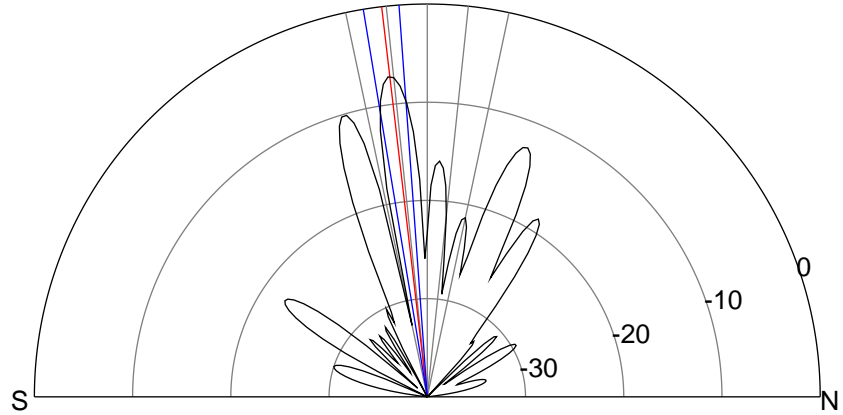
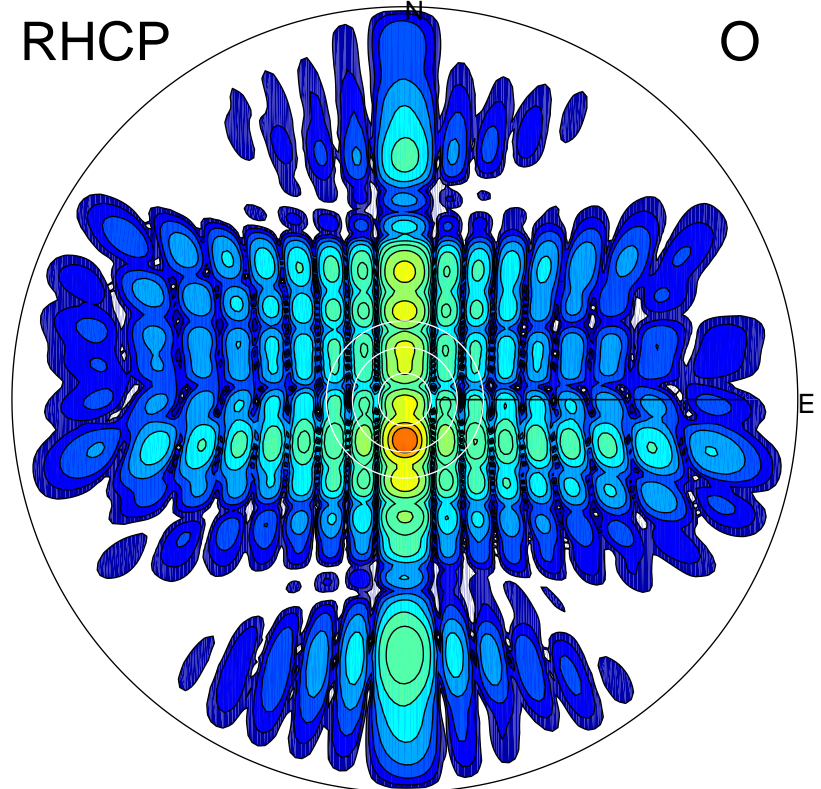
LHCP

X



RHCP

O



### ERP 65.2 MW

Peak gain 20.2 dBi at Az 180 Zen 7  
RHCP gain 25.5 dBi  
N-S peak 20.2 dBi at Zen -6.7  
N-S -3 dB beamwidth 5.2 deg.

### ERP 340.3 MW

Peak gain 27.4 dBi at Az 180 Zen 9  
LHCP gain 17.9 dBi  
N-S peak 27.4 dBi at Zen -9.3  
N-S -3 dB beamwidth 5.7 deg.