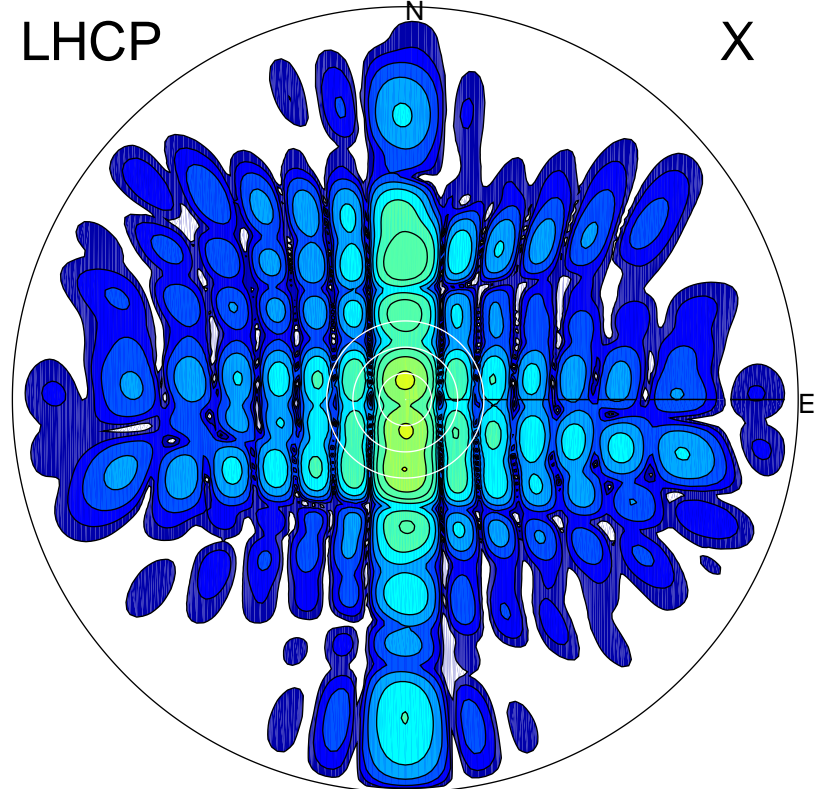


2015-04-23 10:00:05 A1 5.60000000 MHz 562.0 kW

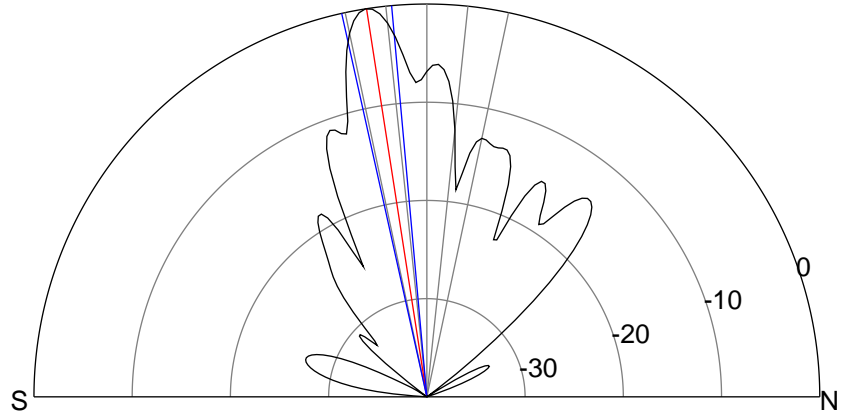
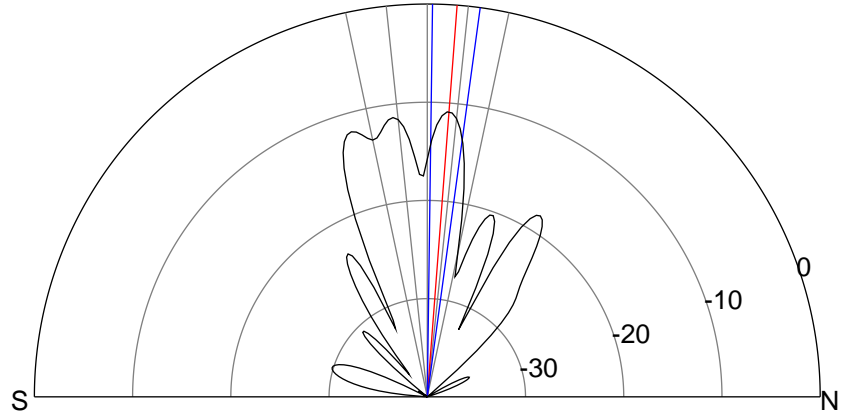
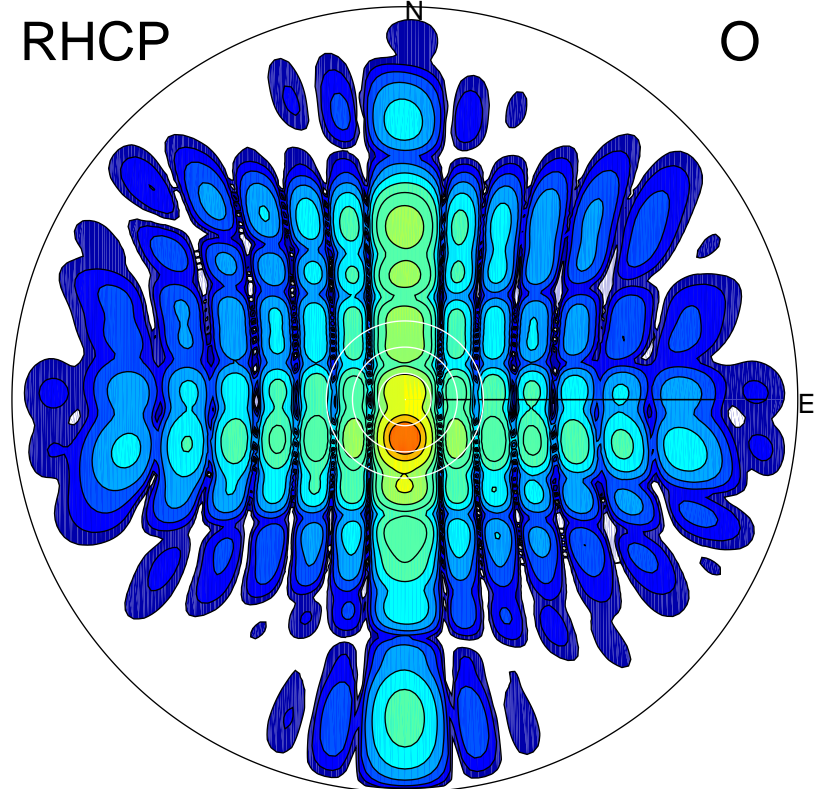
LHCP

X



RHCP

O



ERP 18.5 MW

Peak gain 15.2 dBi at Az 0 Zen 4
RHCP gain 18.3 dBi
N-S peak 15.2 dBi at Zen 4.4
N-S -3 dB beamwidth 7.0 deg.

ERP 228.6 MW

Peak gain 26.1 dBi at Az 181 Zen 9
LHCP gain 14.1 dBi
N-S peak 26.1 dBi at Zen -8.8
N-S -3 dB beamwidth 7.4 deg.