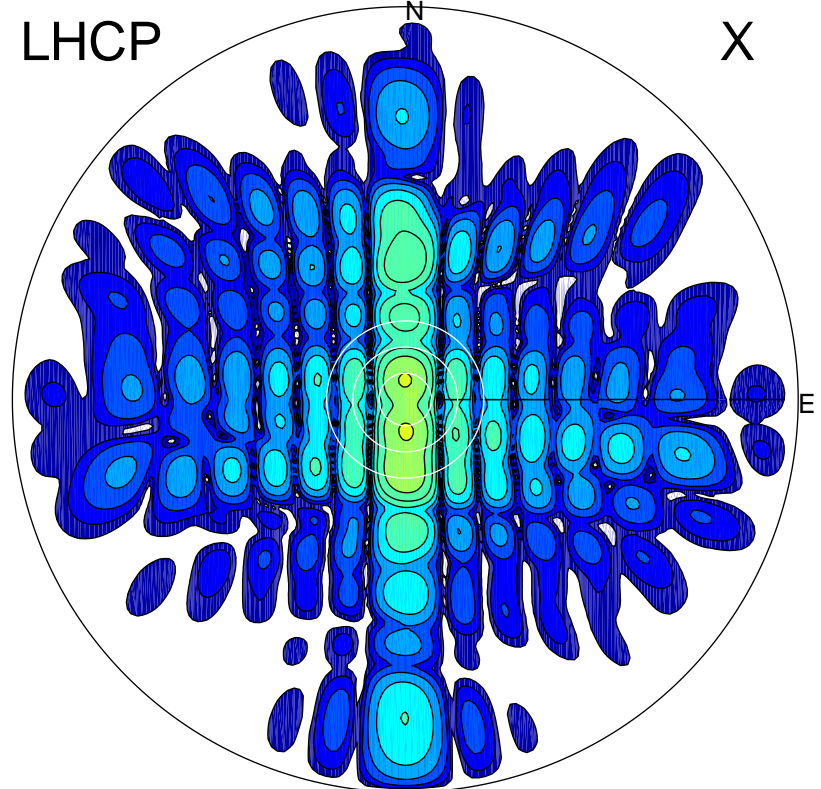


2015-04-22 13:30:05 A1 5.60000000 MHz 540.0 kW

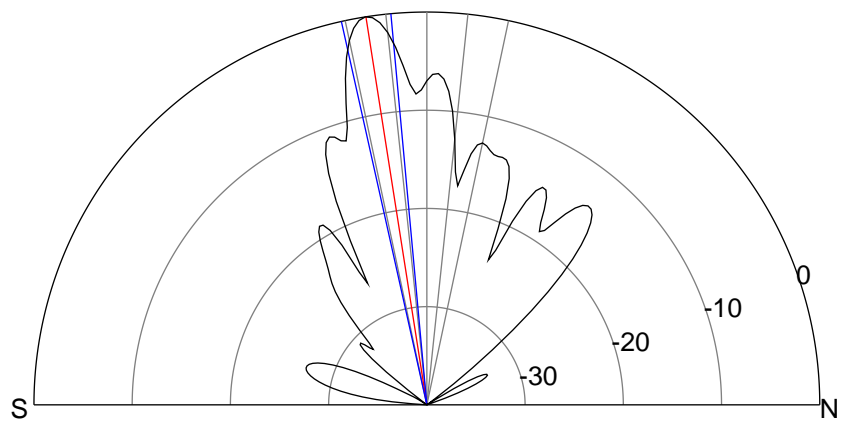
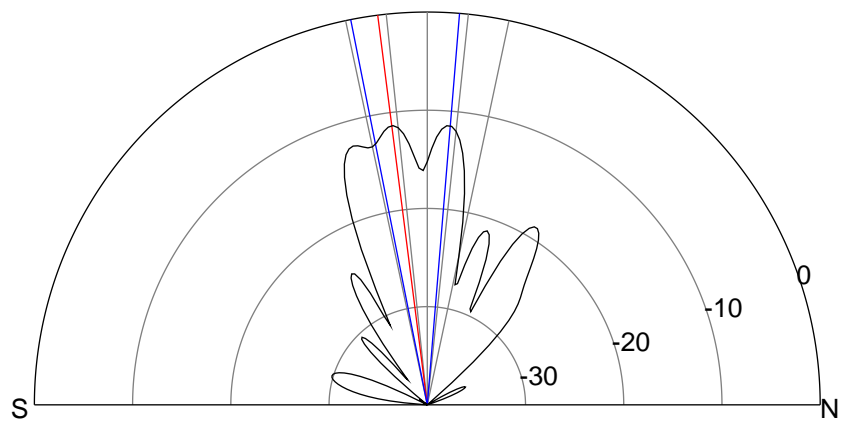
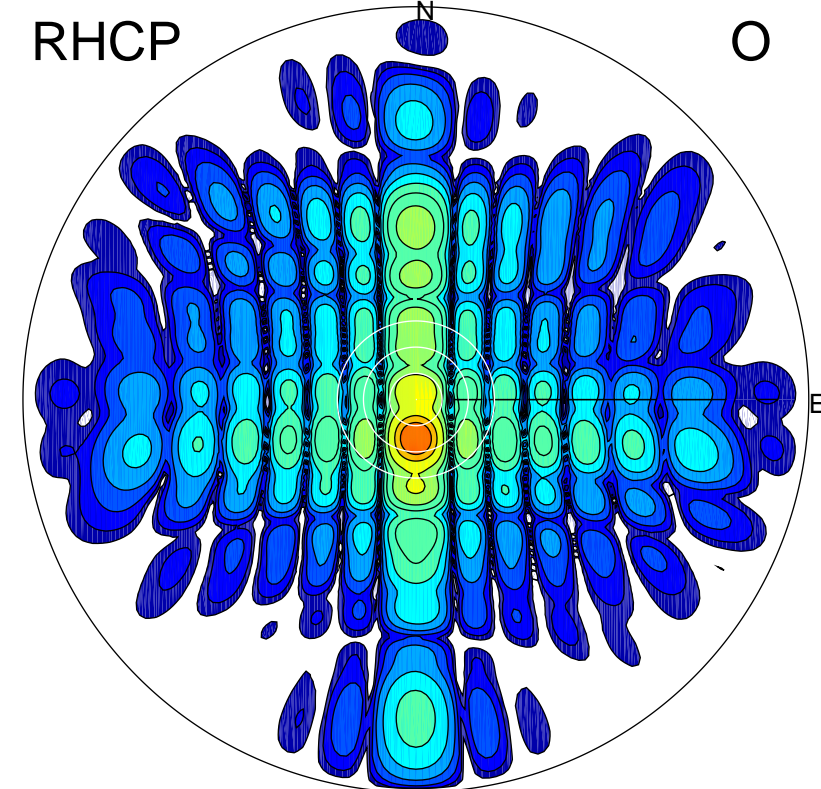
LHCP

X



RHCP

O



ERP 16.3 MW

Peak gain 14.8 dBi at Az 179 Zen 7
RHCP gain 25.3 dBi
N-S peak 14.8 dBi at Zen -7.2
N-S -3 dB beamwidth 16.0 deg.

ERP 222.0 MW

Peak gain 26.1 dBi at Az 180 Zen 9
LHCP gain 14.3 dBi
N-S peak 26.1 dBi at Zen -8.9
N-S -3 dB beamwidth 7.3 deg.