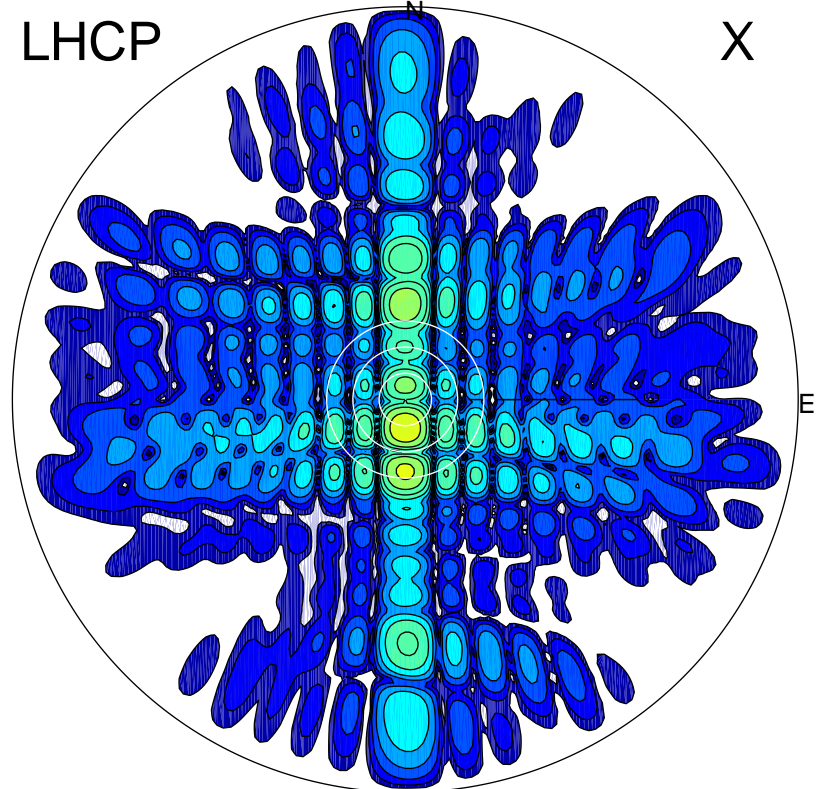


2015-04-22 12:30:05 A1 7.00000000 MHz 624.0 kW

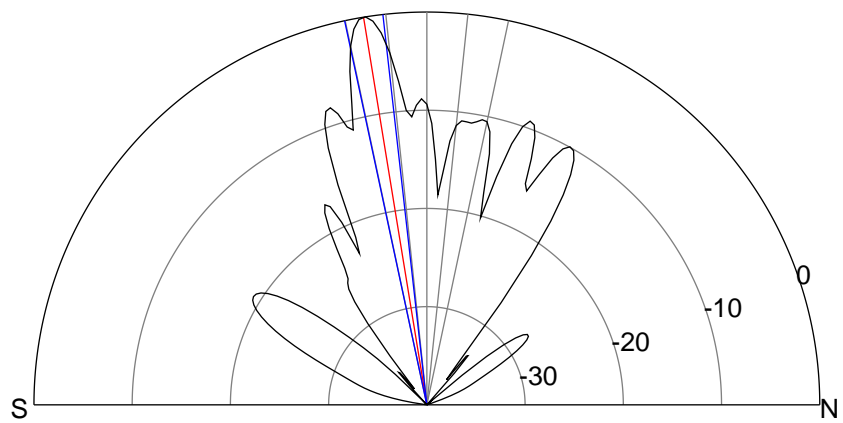
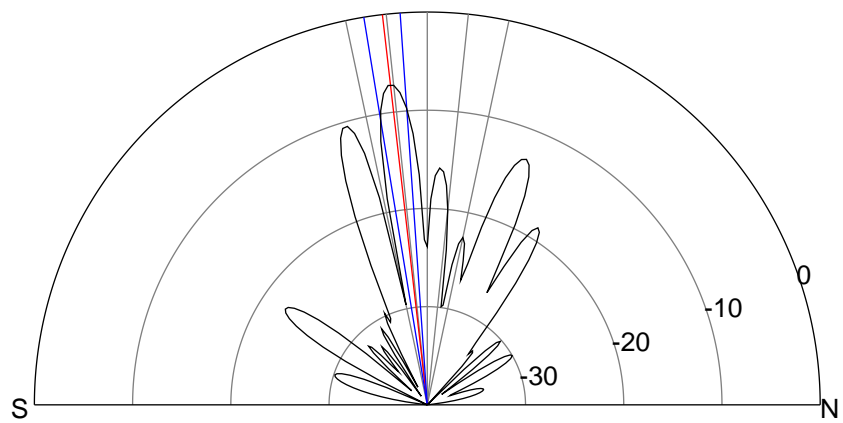
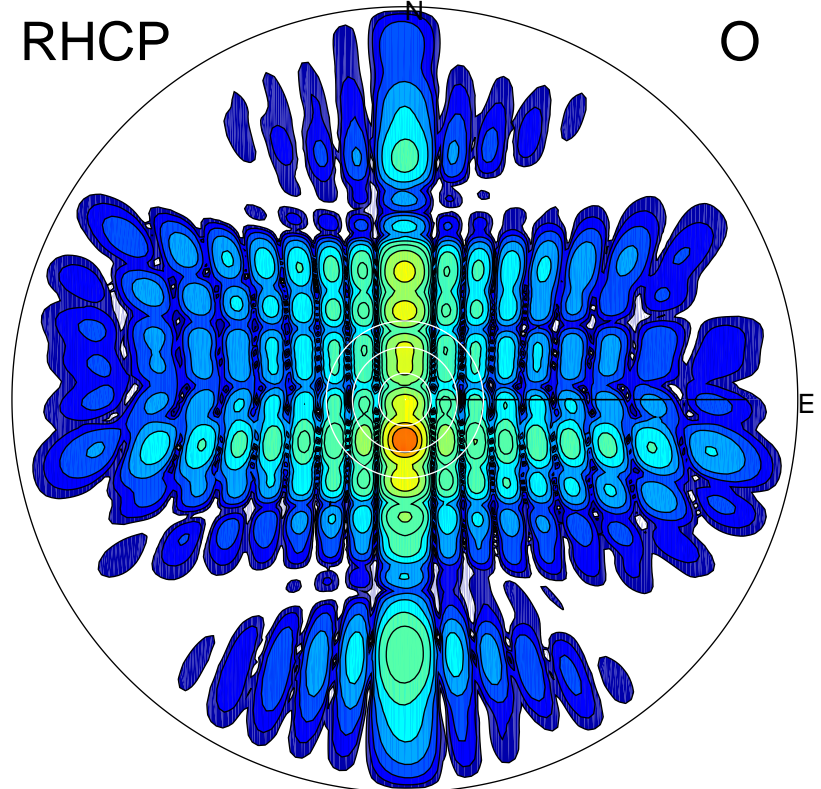
LHCP

X



RHCP

O



### ERP 65.1 MW

Peak gain 20.2 dBi at Az 180 Zen 7  
RHCP gain 25.6 dBi  
N-S peak 20.3 dBi at Zen -6.6  
N-S -3 dB beamwidth 5.3 deg.

### ERP 344.6 MW

Peak gain 27.4 dBi at Az 180 Zen 9  
LHCP gain 17.7 dBi  
N-S peak 27.4 dBi at Zen -9.3  
N-S -3 dB beamwidth 5.7 deg.