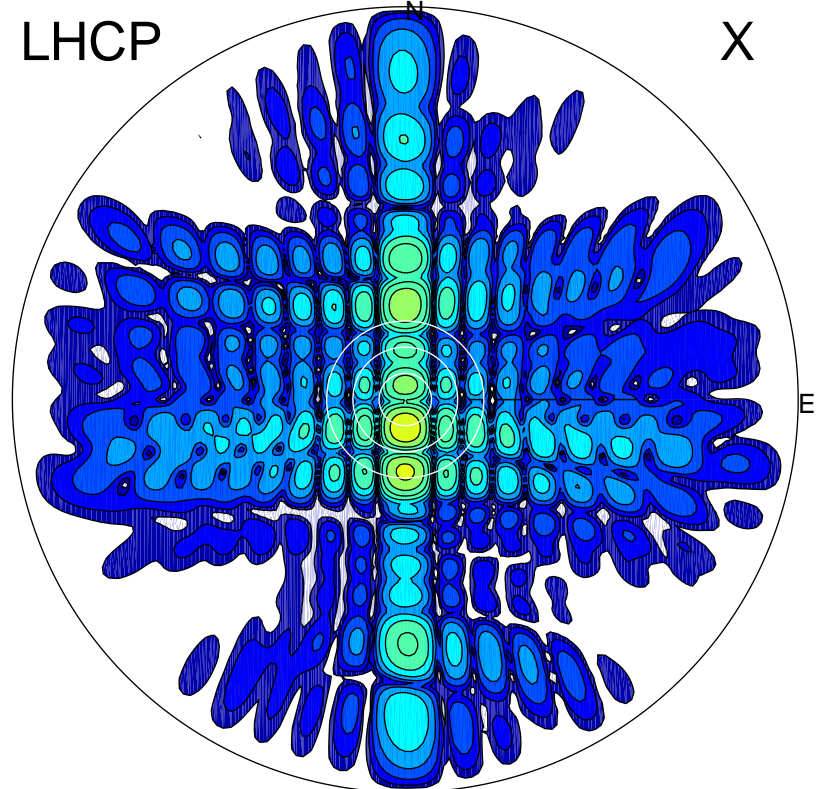


2015-04-20 12:00:05 A1 7.00000000 MHz 647.0 kW

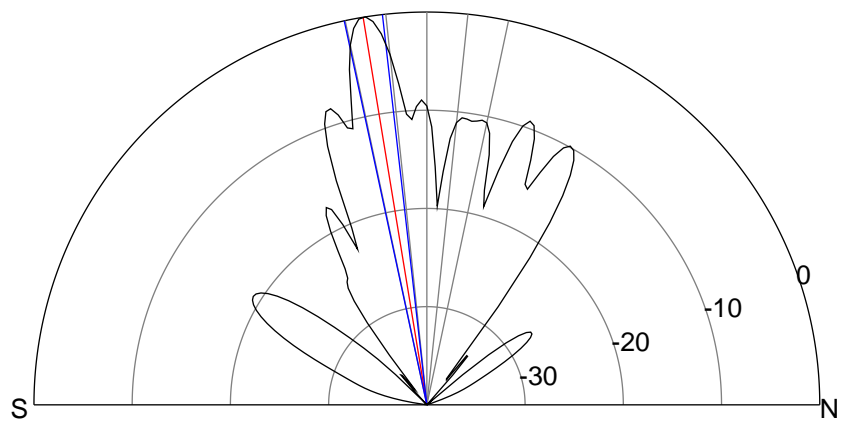
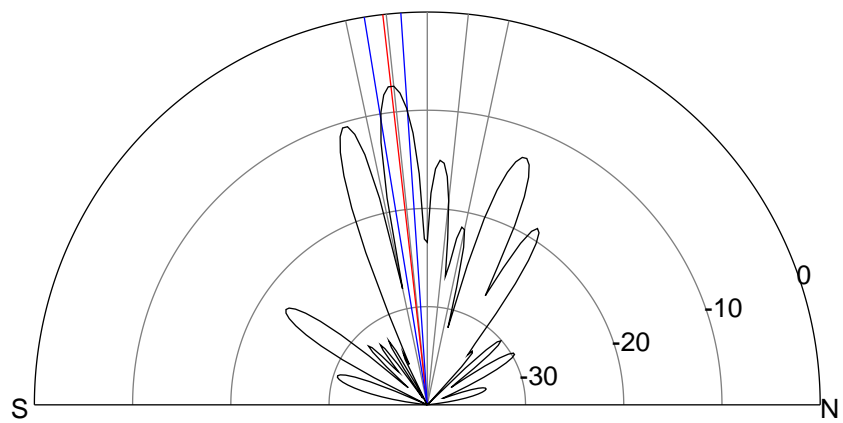
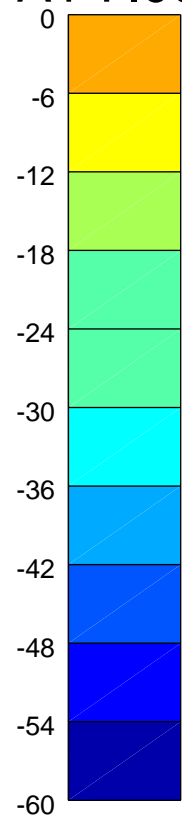
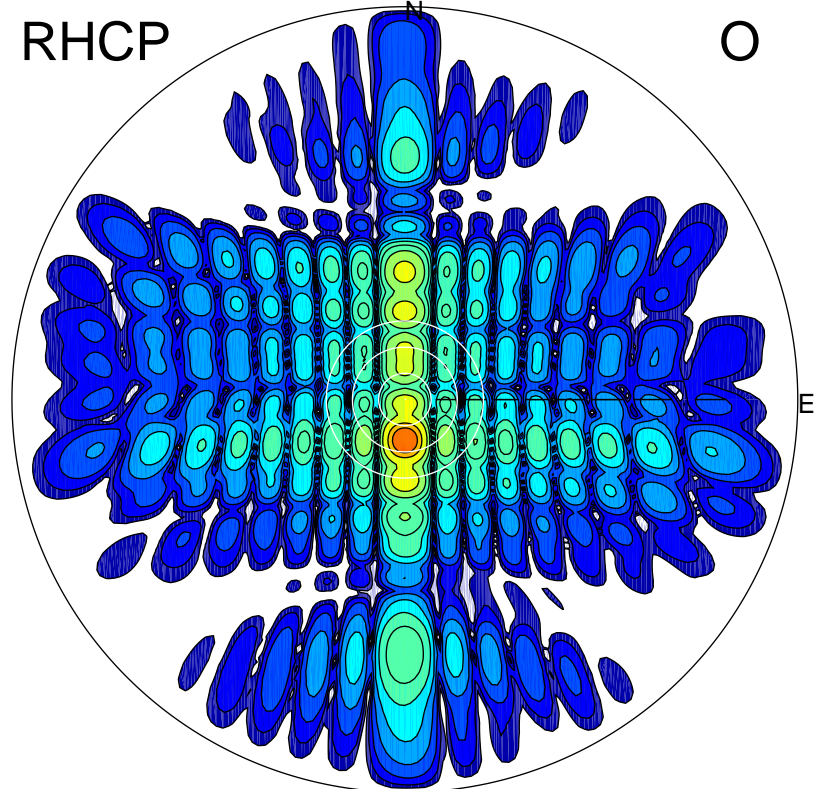
LHCP

X



RHCP

O



### ERP 65.2 MW

Peak gain 20.0 dBi at Az 181 Zen 7  
RHCP gain 25.5 dBi  
N-S peak 20.1 dBi at Zen -6.5  
N-S -3 dB beamwidth 5.4 deg.

### ERP 356.1 MW

Peak gain 27.4 dBi at Az 180 Zen 9  
LHCP gain 17.6 dBi  
N-S peak 27.4 dBi at Zen -9.3  
N-S -3 dB beamwidth 5.6 deg.