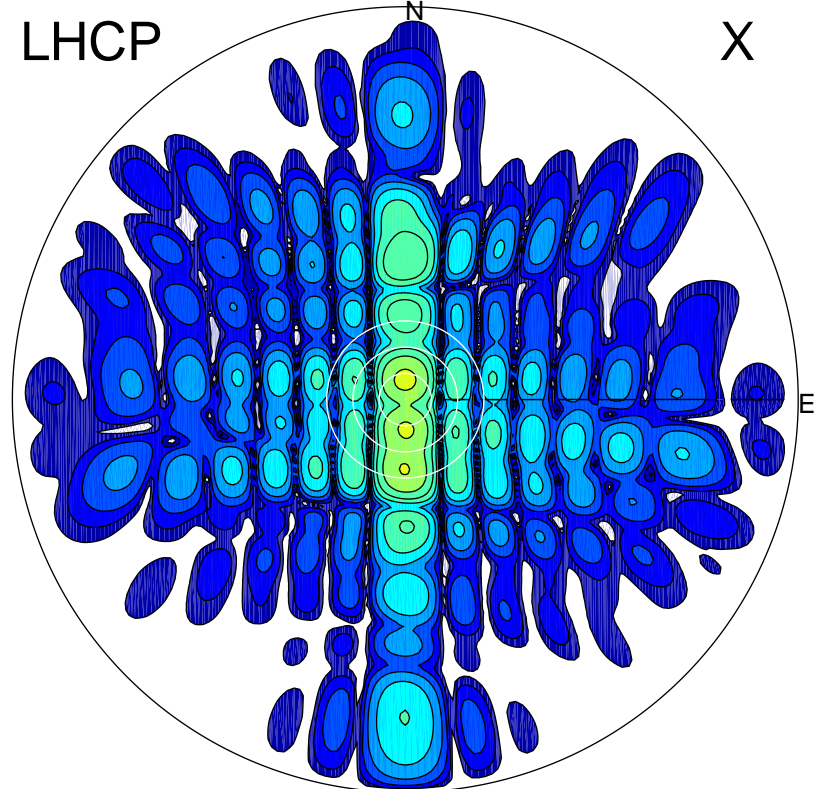


2015-04-20 10:00:05 A1 5.60000000 MHz 572.0 kW

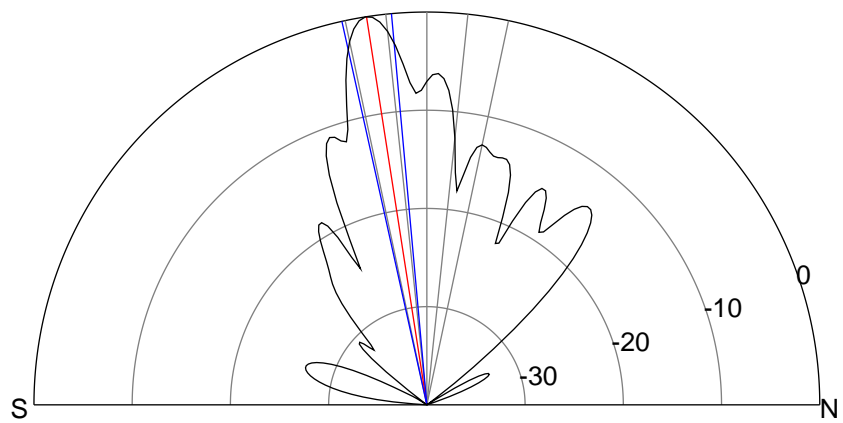
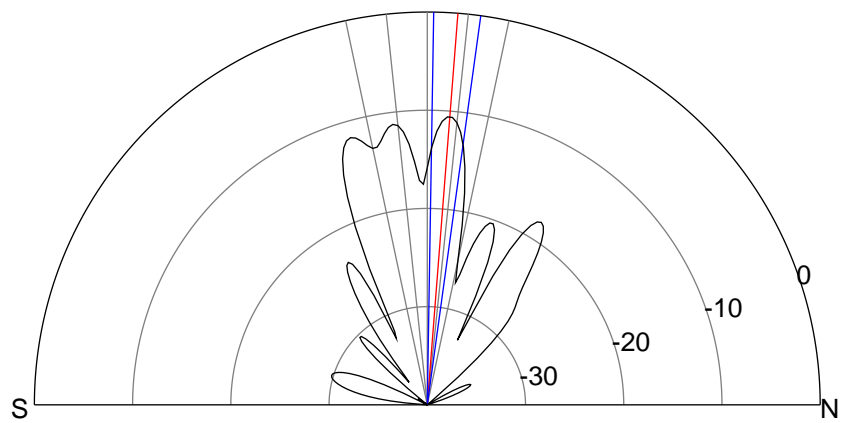
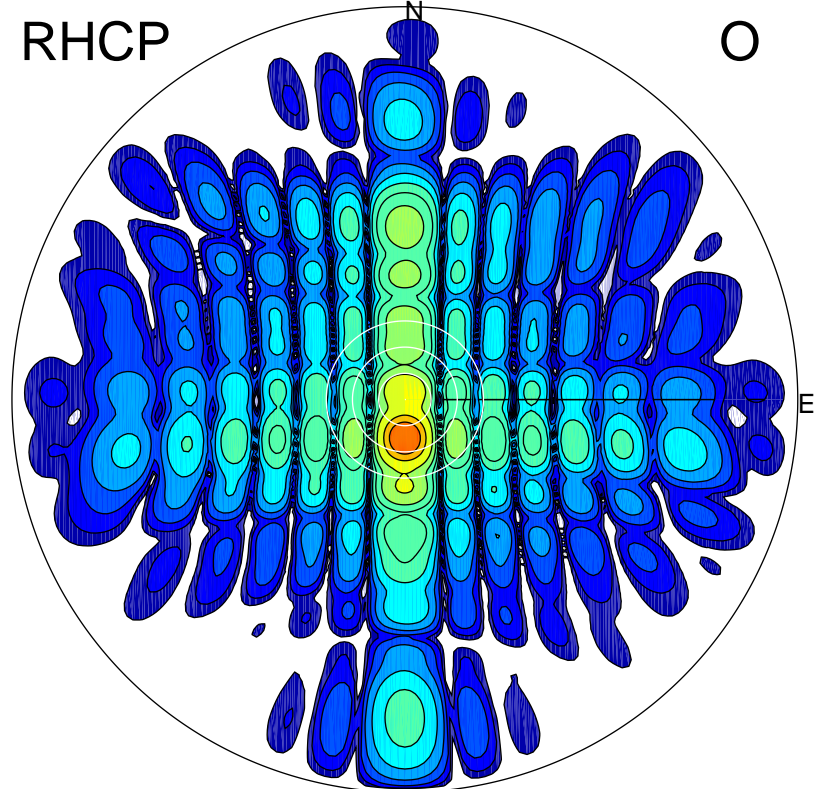
LHCP

X



RHCP

O



ERP 20.3 MW

Peak gain 15.5 dBi at Az 359 Zen 4
RHCP gain 18.2 dBi
N-S peak 15.5 dBi at Zen 4.5
N-S -3 dB beamwidth 6.9 deg.

ERP 232.8 MW

Peak gain 26.1 dBi at Az 180 Zen 9
LHCP gain 14.0 dBi
N-S peak 26.1 dBi at Zen -8.8
N-S -3 dB beamwidth 7.3 deg.