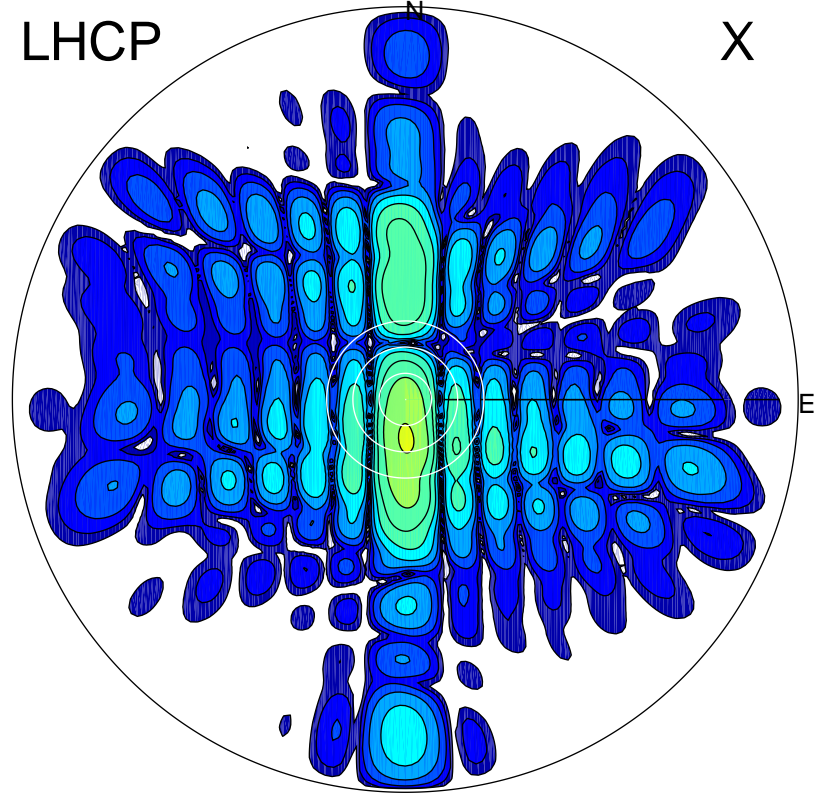


2015-04-16 16:07:55 A1 5.55000000 MHz 623.0 kW

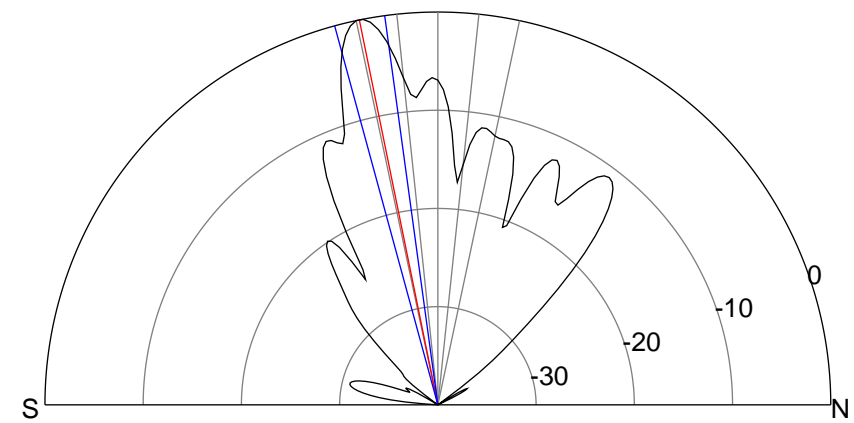
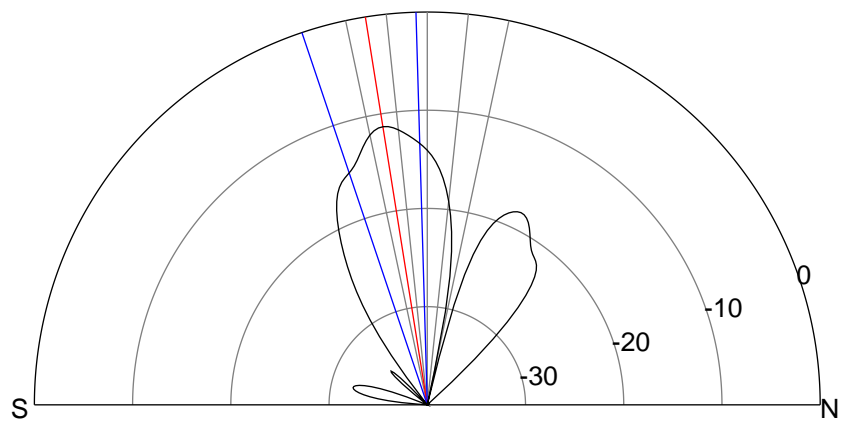
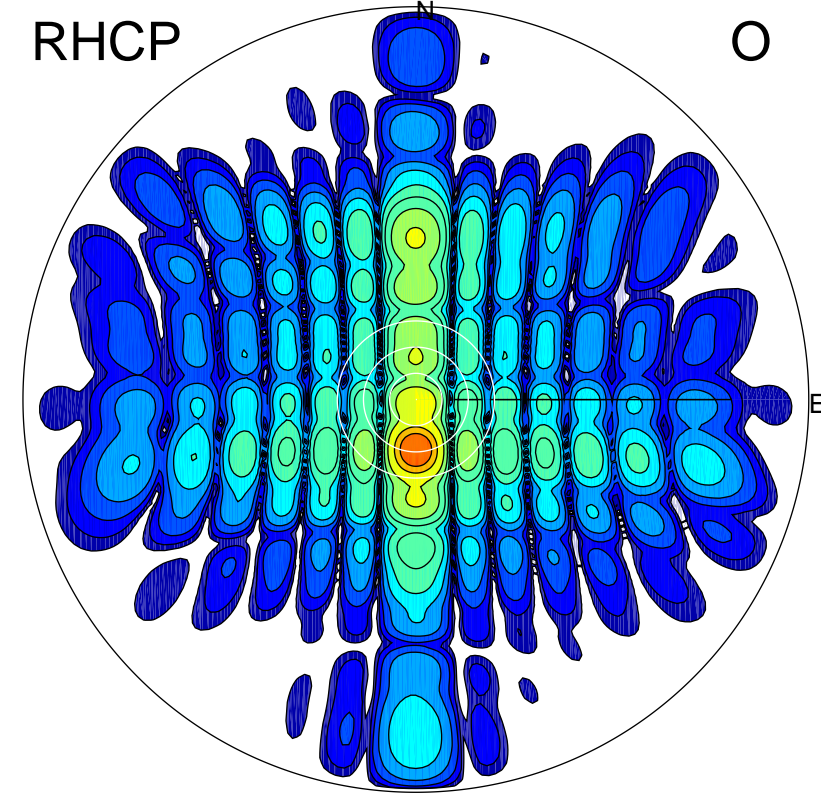
LHCP

X



RHCP

O



ERP 17.9 MW

Peak gain 14.6 dBi at Az 179 Zen 9
RHCP gain 24.6 dBi
N-S peak 14.6 dBi at Zen -9.1
N-S -3 dB beamwidth 17.0 deg.

ERP 241.6 MW

Peak gain 25.9 dBi at Az 180 Zen 12
LHCP gain 14.0 dBi
N-S peak 25.9 dBi at Zen -11.5
N-S -3 dB beamwidth 7.5 deg.