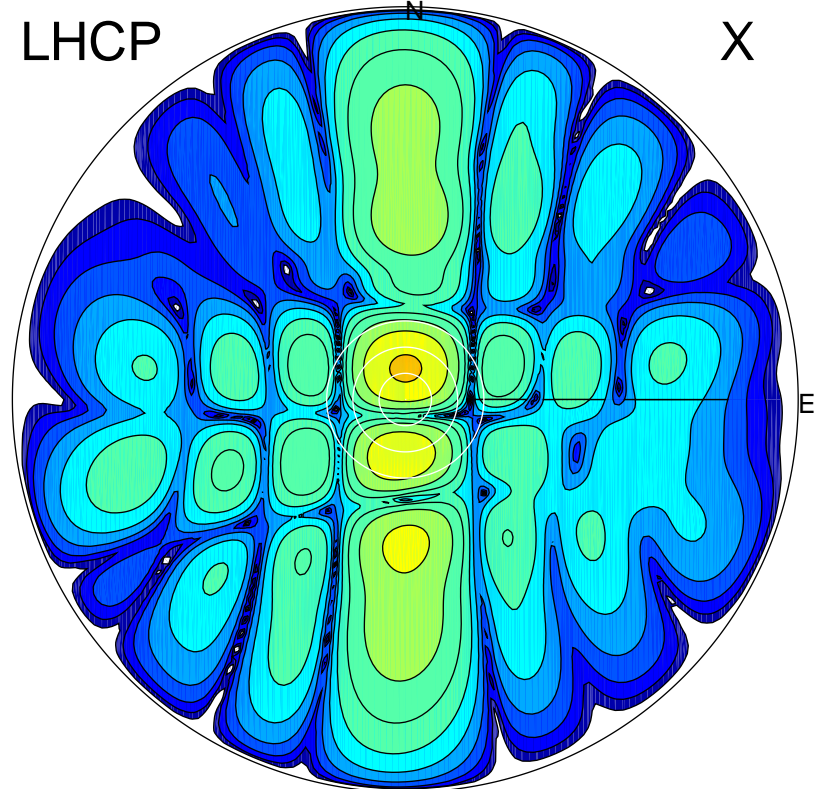


2015-04-16 15:12:05 A2 4.23000000 MHz 530.0 kW

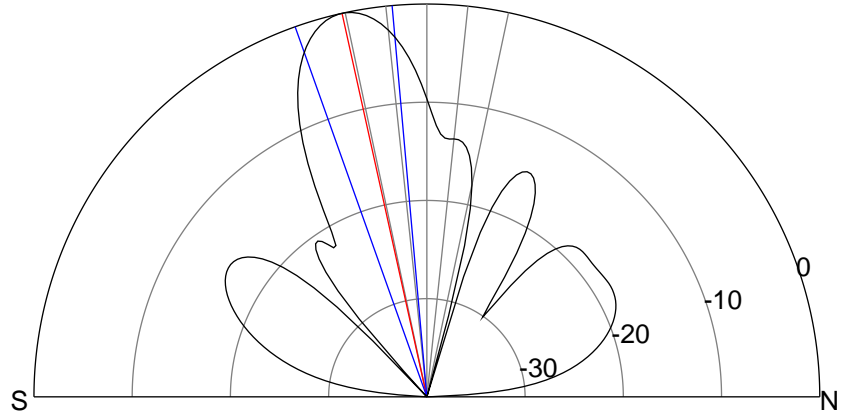
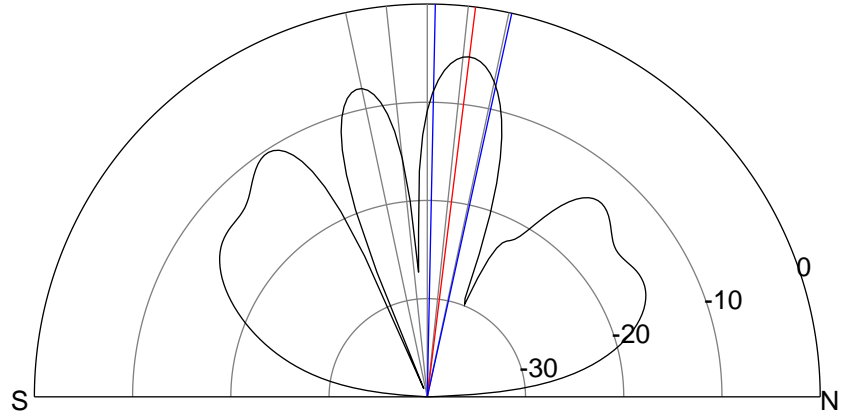
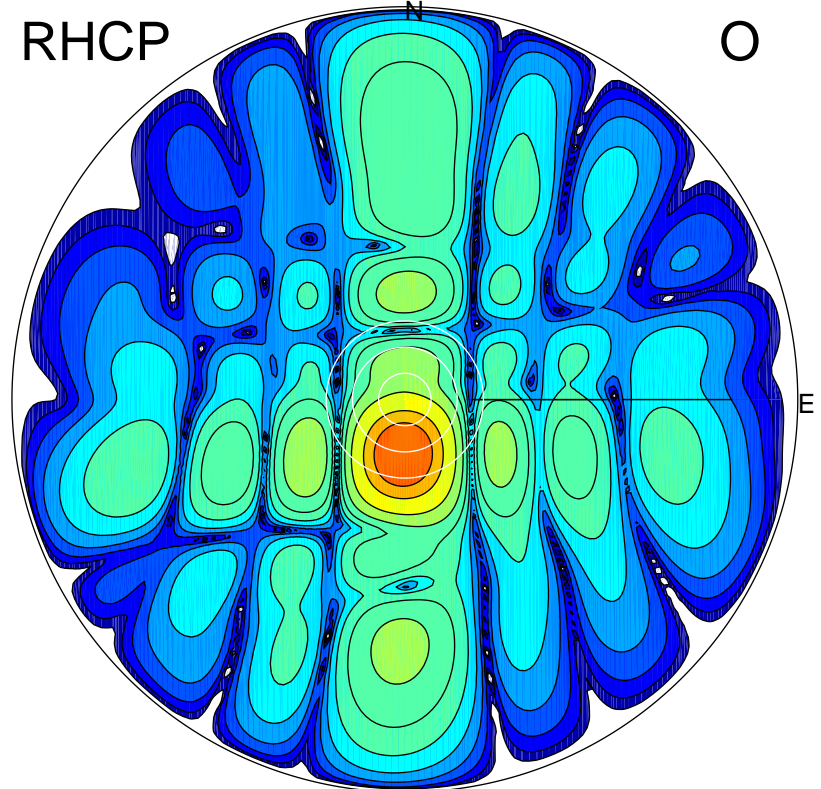
LHCP

X



RHCP

O



### ERP 18.0 MW

Peak gain 15.3 dBi at Az 358 Zen 7  
RHCP gain 6.8 dBi  
N-S peak 15.3 dBi at Zen 7.1  
N-S -3 dB beamwidth 11.2 deg.

### ERP 58.5 MW

Peak gain 20.4 dBi at Az 182 Zen 13  
LHCP gain 12.6 dBi  
N-S peak 20.4 dBi at Zen -12.5  
N-S -3 dB beamwidth 14.5 deg.