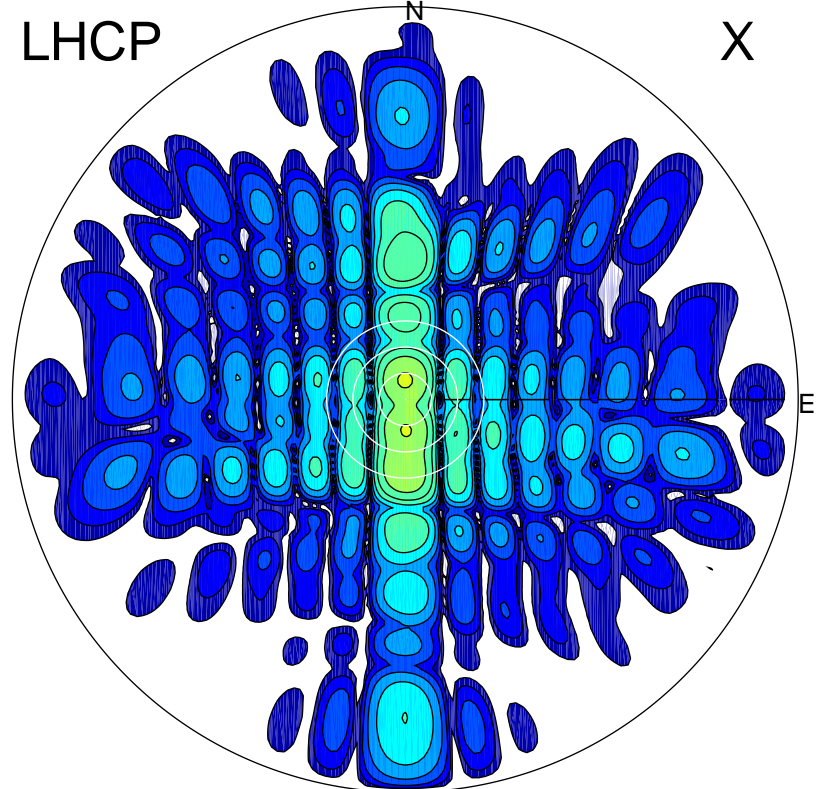


2015-04-15 10:00:05 A1 5.60000000 MHz 565.0 kW

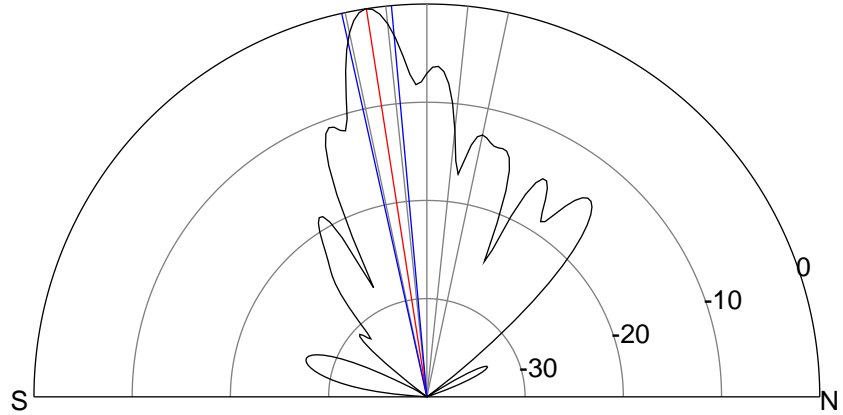
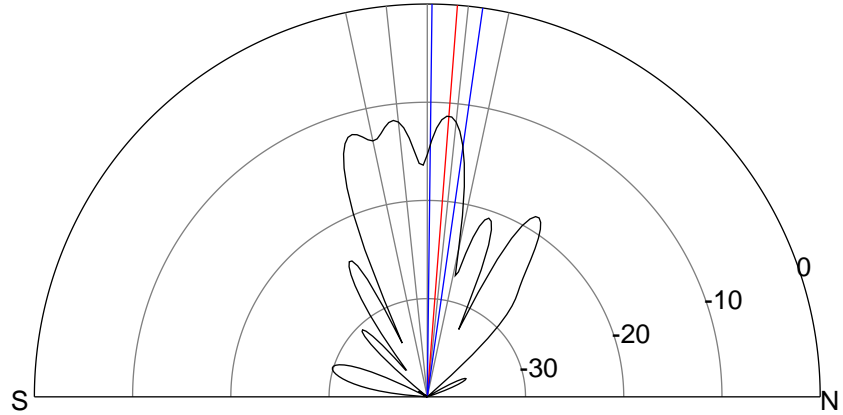
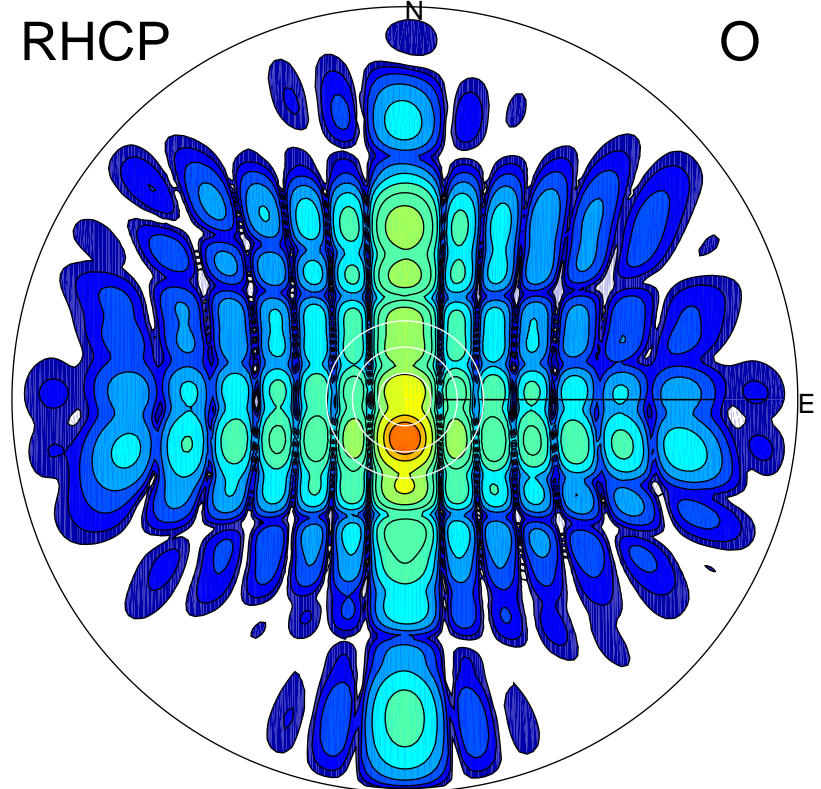
LHCP

X



RHCP

O



### ERP 17.0 MW

Peak gain 14.8 dBi at Az 0 Zen 4  
RHCP gain 18.1 dBi  
N-S peak 14.8 dBi at Zen 4.4  
N-S -3 dB beamwidth 7.4 deg.

### ERP 231.6 MW

Peak gain 26.1 dBi at Az 180 Zen 9  
LHCP gain 13.9 dBi  
N-S peak 26.1 dBi at Zen -8.9  
N-S -3 dB beamwidth 7.3 deg.