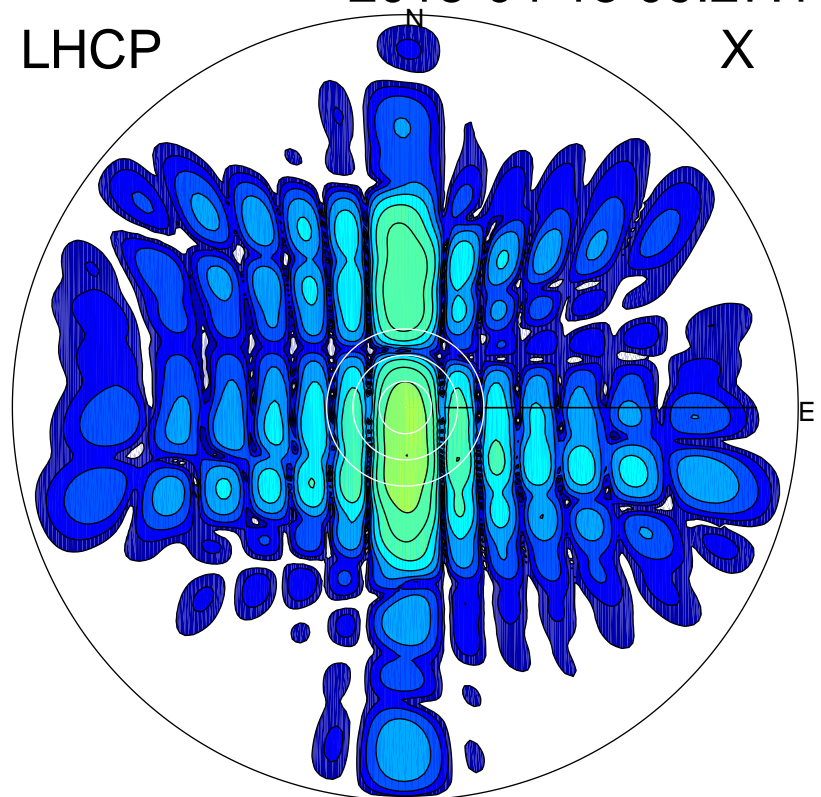


2015-04-15 09:27:10 A1 5.42300000 MHz 630.0 kW

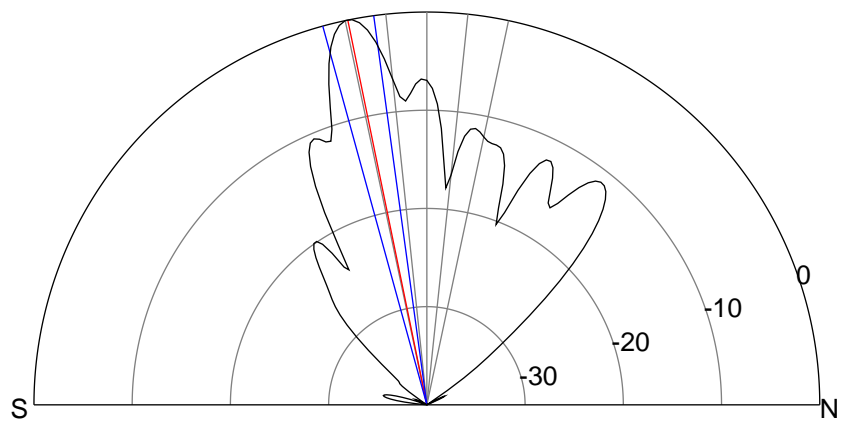
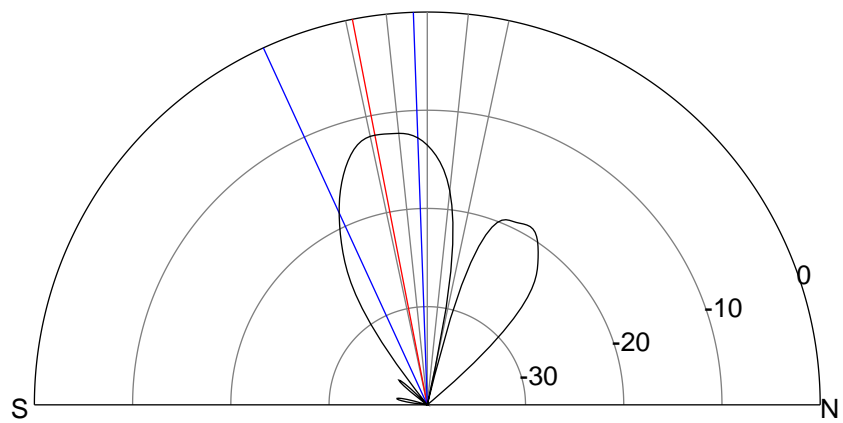
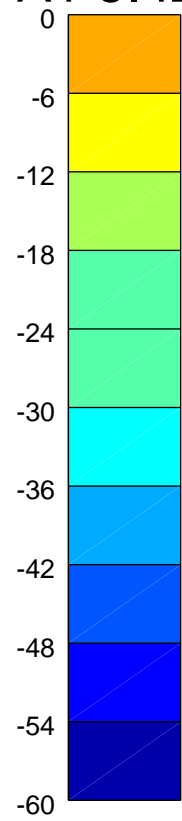
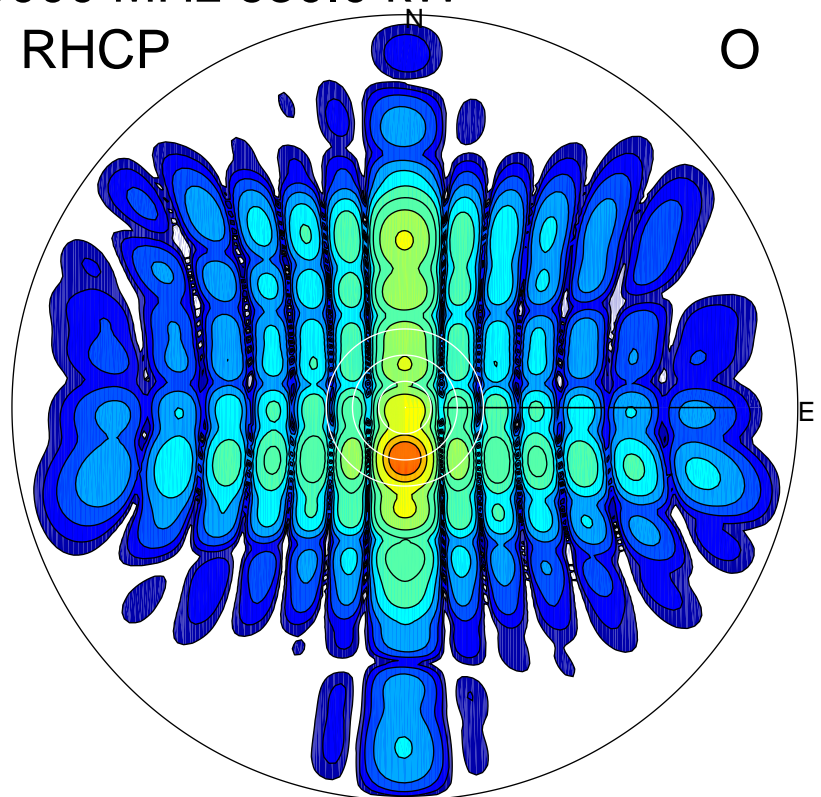
LHCP

X



RHCP

O



ERP 14.9 MW

Peak gain 13.7 dBi at Az 178 Zen 11
RHCP gain 25.7 dBi
N-S peak 13.7 dBi at Zen -11.0
N-S -3 dB beamwidth 22.6 deg.

ERP 235.4 MW

Peak gain 25.7 dBi at Az 180 Zen 12
LHCP gain 13.7 dBi
N-S peak 25.8 dBi at Zen -11.6
N-S -3 dB beamwidth 7.6 deg.