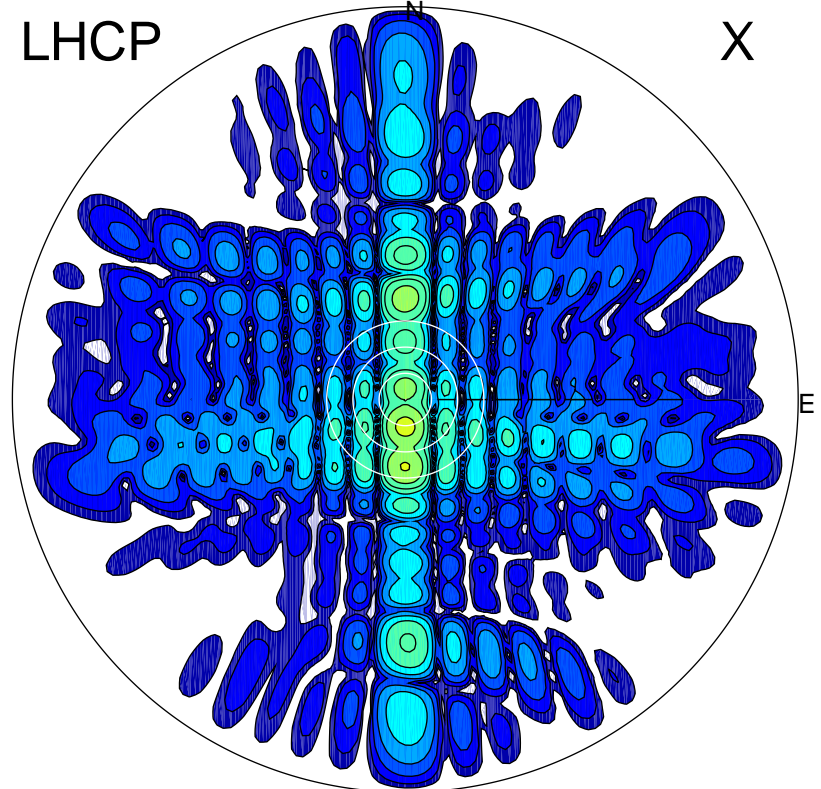


2015-04-14 10:05:55 A1 7.00000000 MHz 618.0 kW

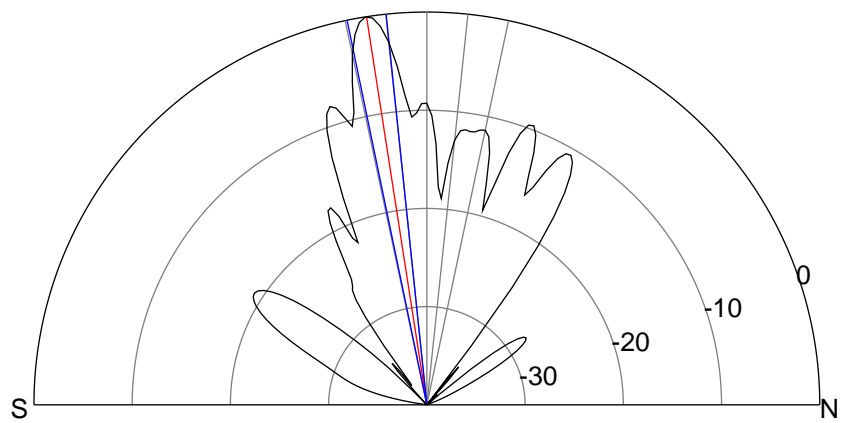
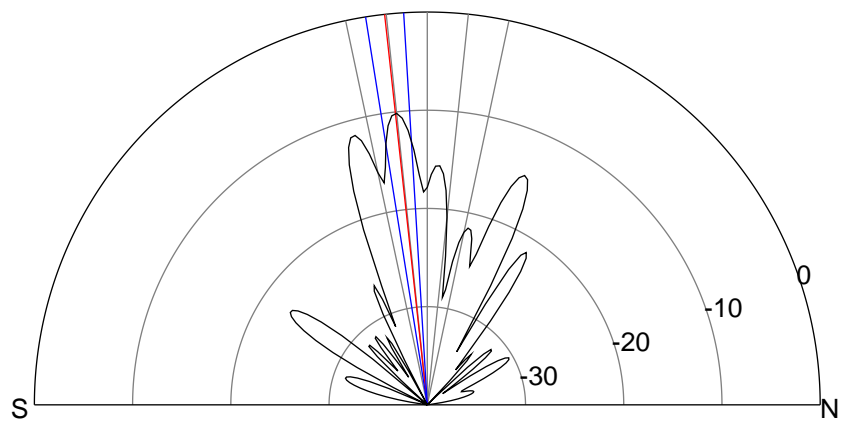
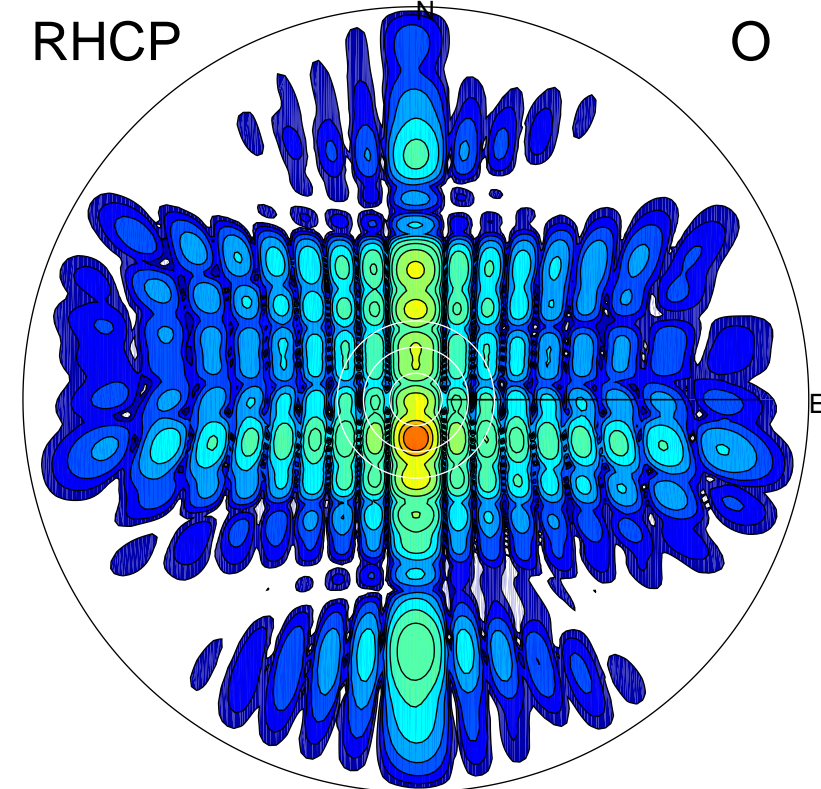
LHCP

X



RHCP

O



ERP 35.5 MW

Peak gain 17.6 dBi at Az 180 Zen 6
RHCP gain 24.9 dBi
N-S peak 17.6 dBi at Zen -6.2
N-S -3 dB beamwidth 5.6 deg.

ERP 367.8 MW

Peak gain 27.7 dBi at Az 180 Zen 9
LHCP gain 14.7 dBi
N-S peak 27.8 dBi at Zen -8.8
N-S -3 dB beamwidth 5.8 deg.