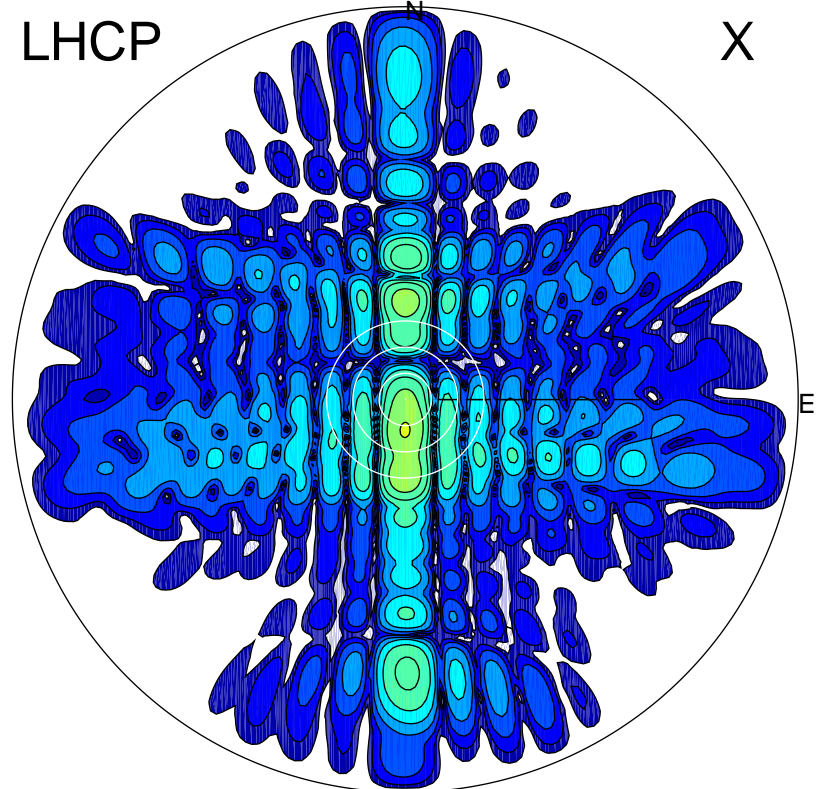


2015-04-14 09:34:03 A1 6.77000000 MHz 630.0 kW

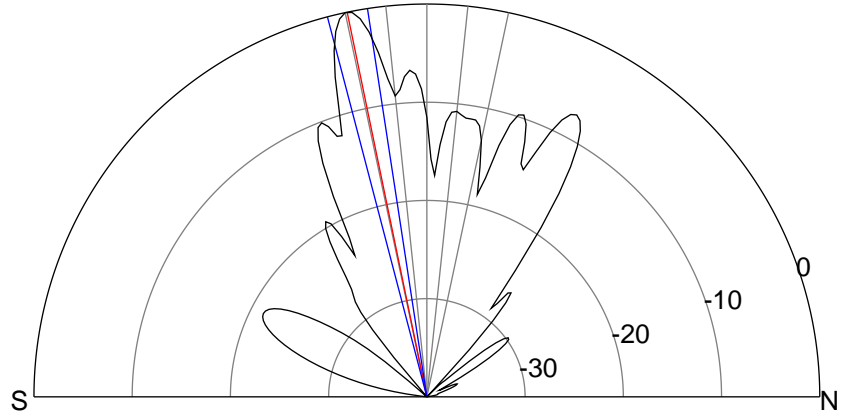
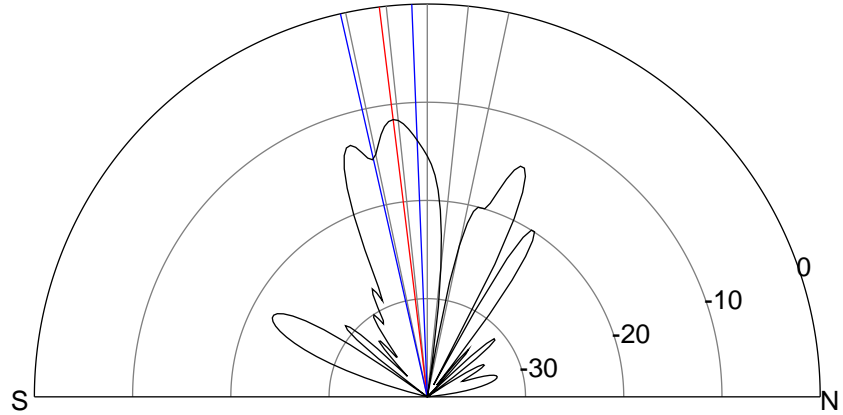
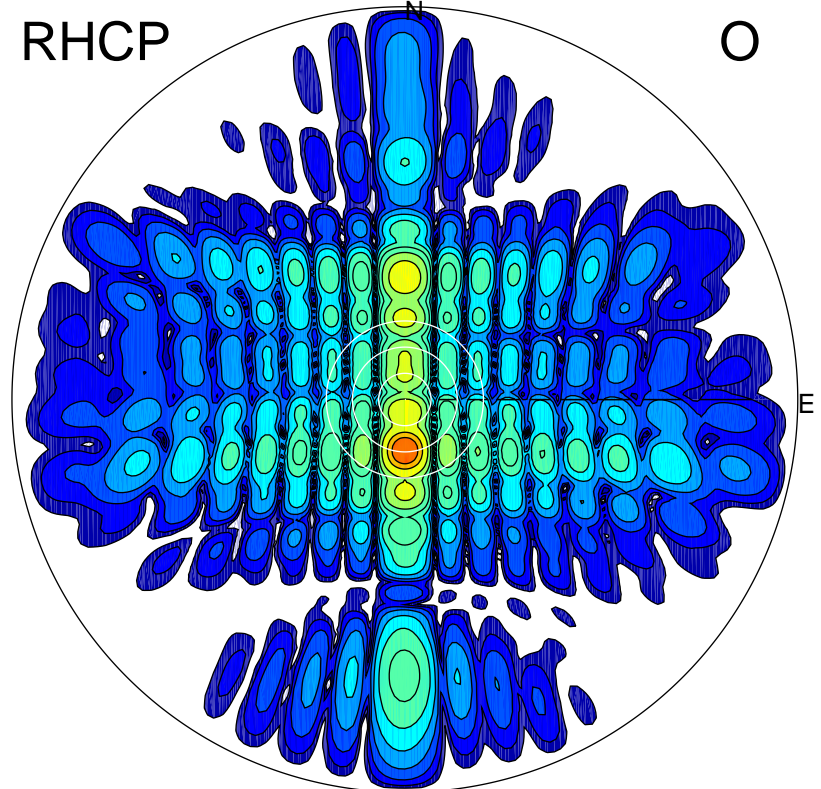
LHCP

X



RHCP

O



ERP 23.0 MW

Peak gain 15.6 dBi at Az 180 Zen 7
RHCP gain 19.8 dBi
N-S peak 15.6 dBi at Zen -7.0
N-S -3 dB beamwidth 10.5 deg.

ERP 328.7 MW

Peak gain 27.2 dBi at Az 180 Zen 12
LHCP gain 12.4 dBi
N-S peak 27.2 dBi at Zen -11.7
N-S -3 dB beamwidth 6.0 deg.