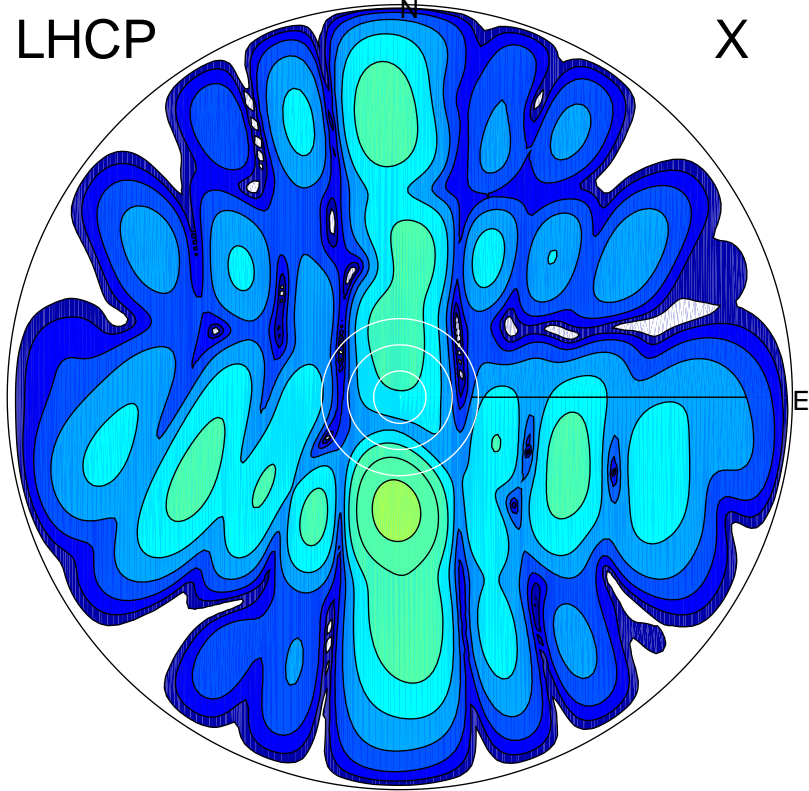


2015-03-12 11:22:57 A3 6.96000000 MHz 257.0 kW

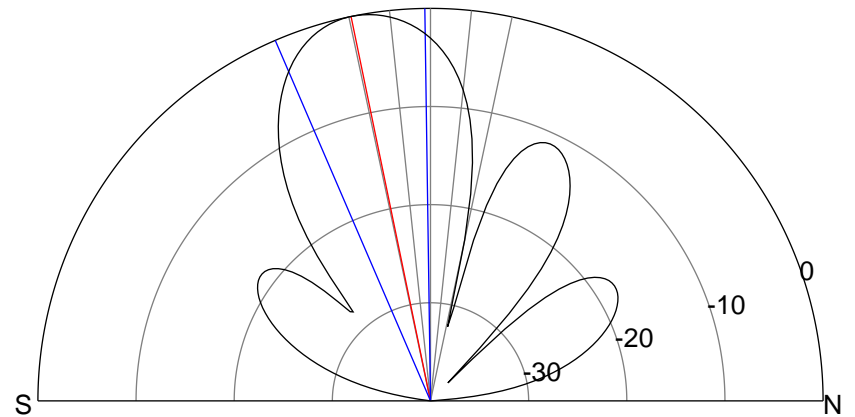
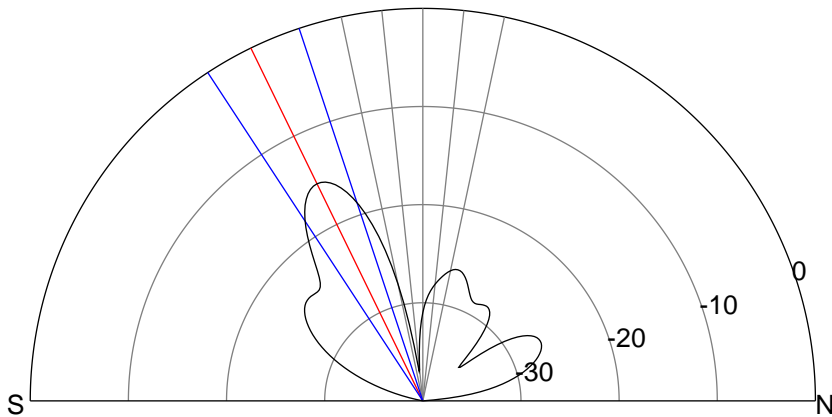
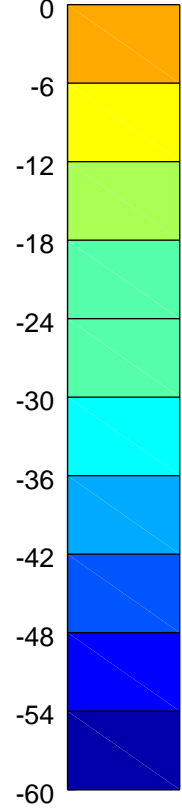
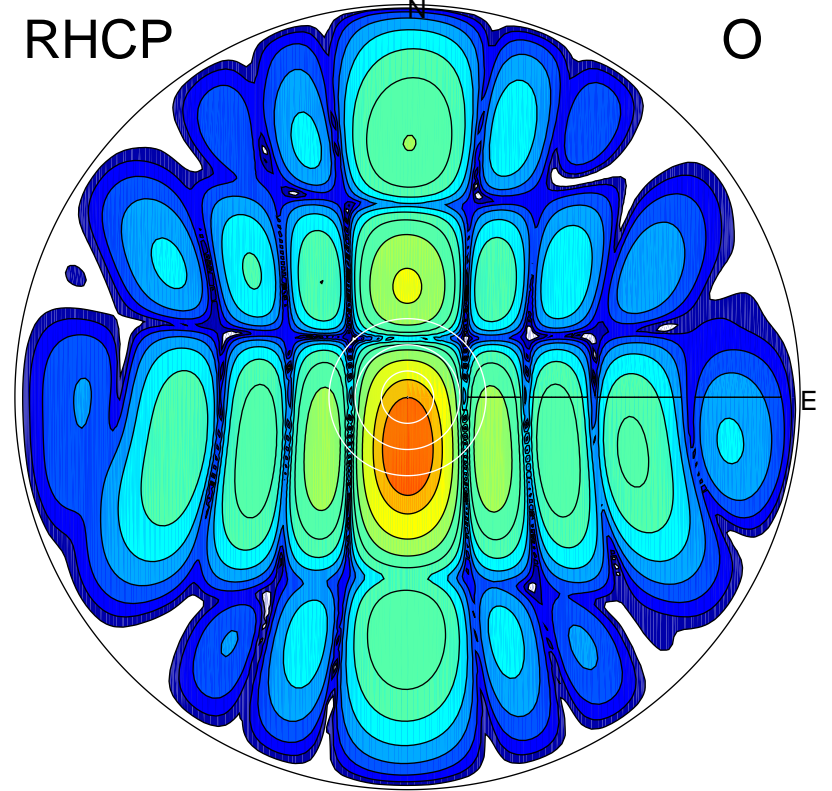
LHCP

X



RHCP

O



ERP 1.0 MW

Peak gain 5.7 dBi at Az 182 Zen 26
RHCP gain 15.6 dBi
N-S peak 5.6 dBi at Zen -26.0
N-S -3 dB beamwidth 14.8 deg.

ERP 32.4 MW

Peak gain 21.0 dBi at Az 179 Zen 12
LHCP gain -7.0 dBi
N-S peak 21.0 dBi at Zen -11.7
N-S -3 dB beamwidth 22.5 deg.