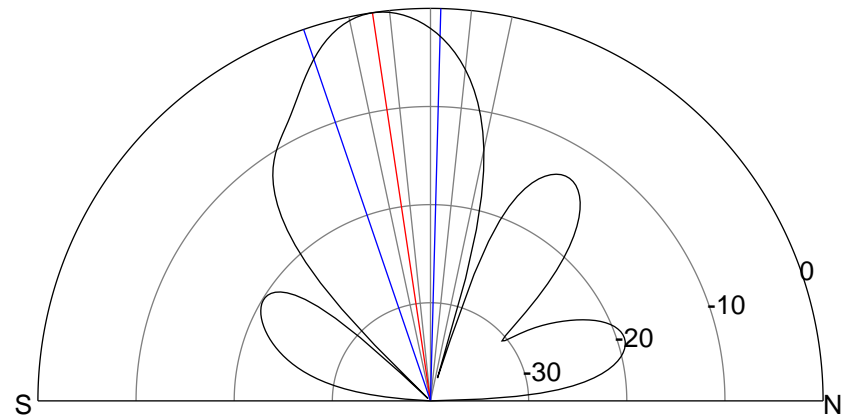
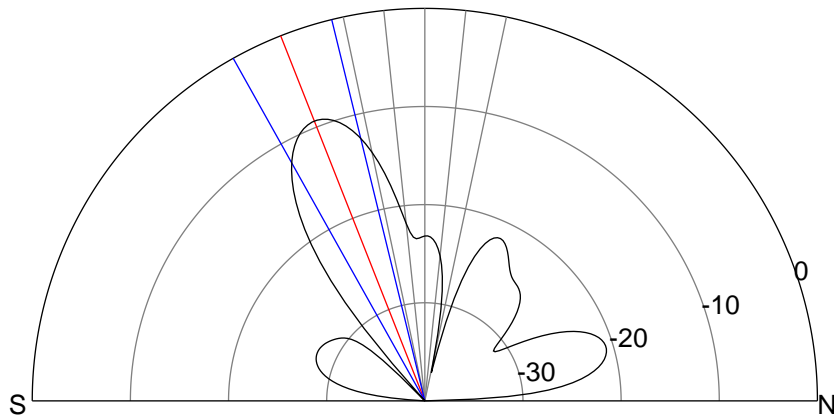
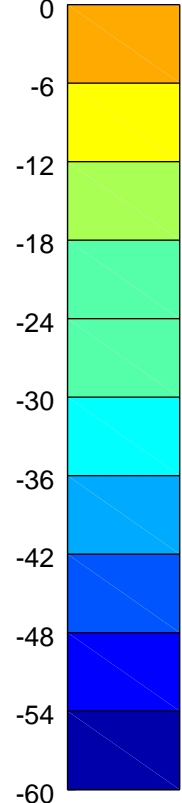
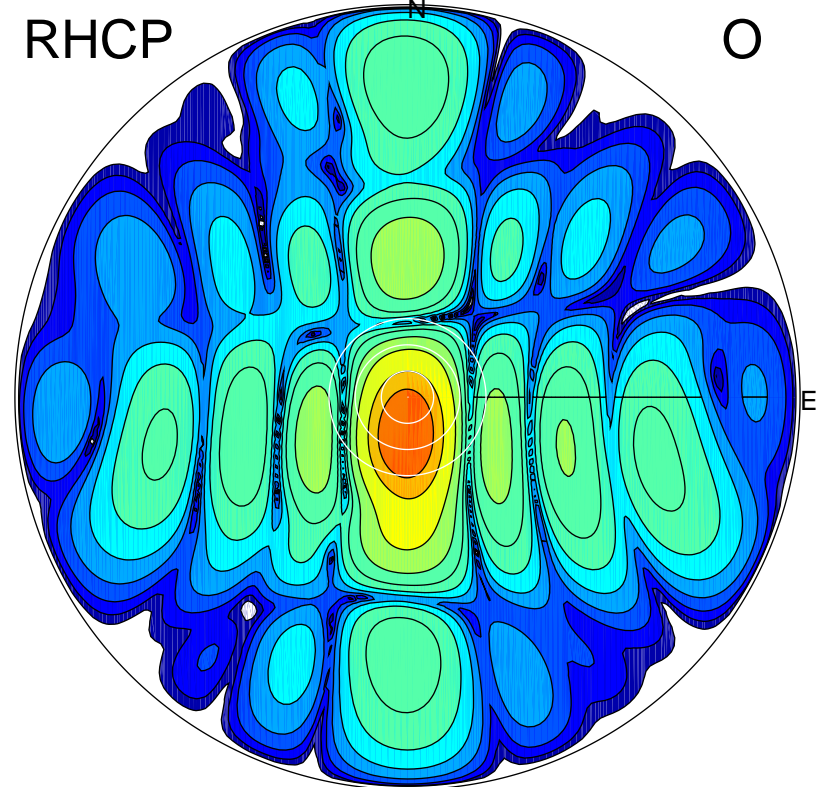
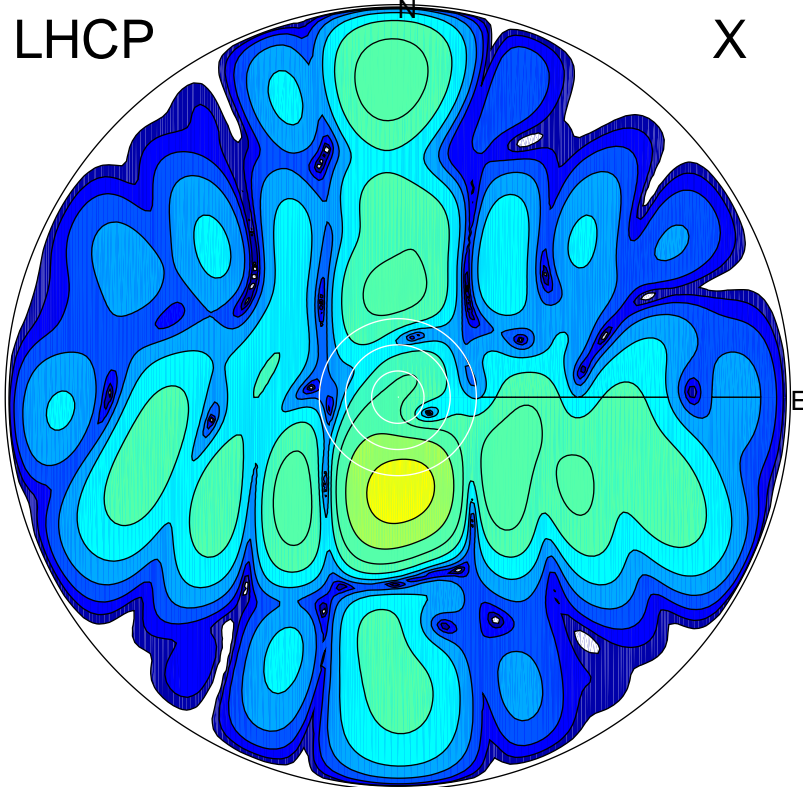


2015-03-12 10:14:57 A3 6.20000000 MHz 483.0 kW



ERP 6.2 MW

Peak gain 11.1 dBi at Az 177 Zen 21
RHCP gain 15.8 dBi
N-S peak 11.1 dBi at Zen -21.5
N-S -3 dB beamwidth 15.5 deg.

ERP 53.3 MW

Peak gain 20.4 dBi at Az 182 Zen 9
LHCP gain 2.7 dBi
N-S peak 20.4 dBi at Zen -8.5
N-S -3 dB beamwidth 20.4 deg.