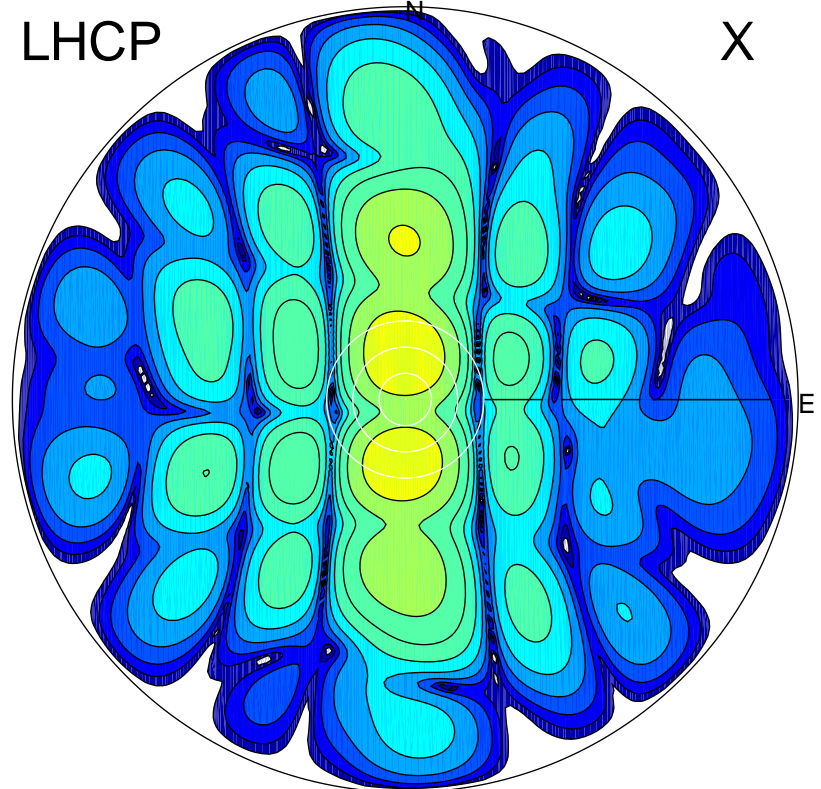


2015-03-09 07:53:01 A3 5.42300000 MHz 672.0 kW

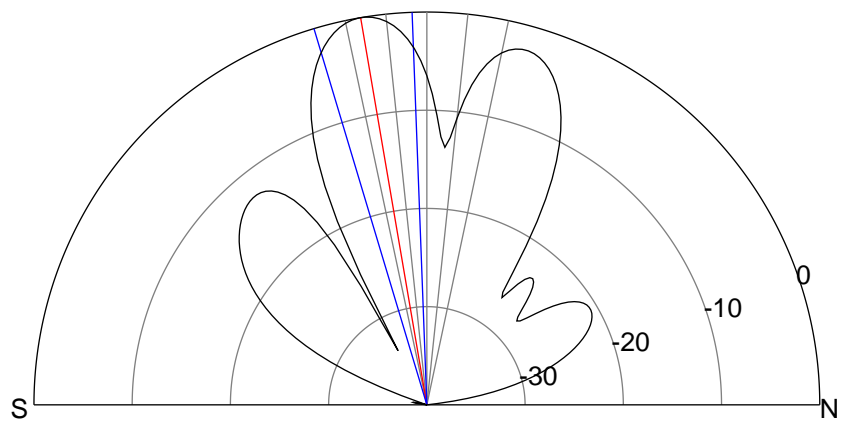
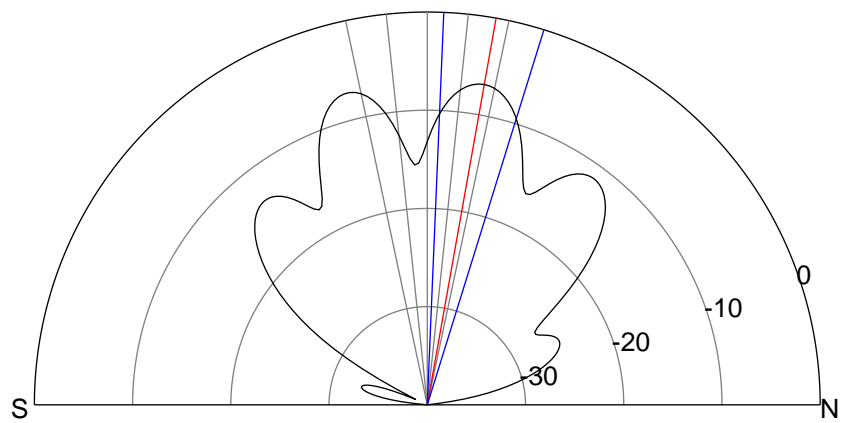
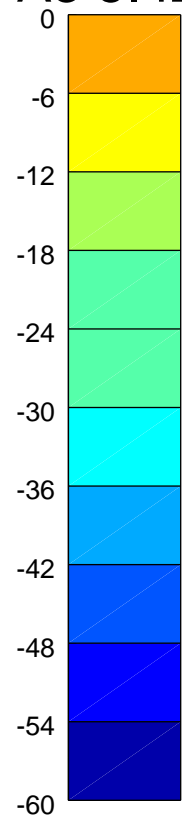
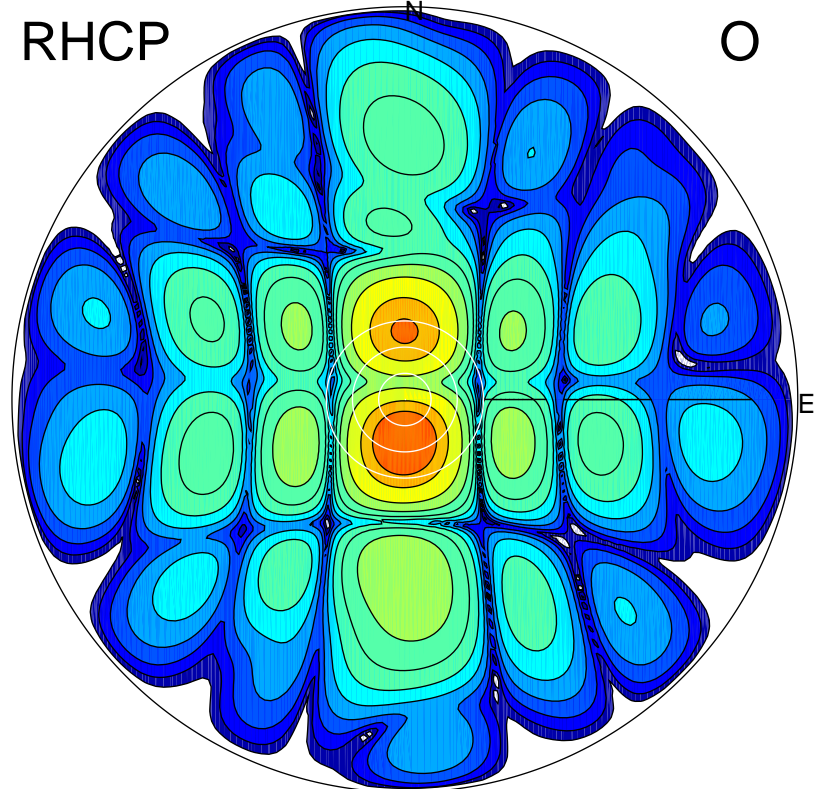
LHCP

X



RHCP

O



ERP 11.2 MW

Peak gain 12.2 dBi at Az 359 Zen 10
RHCP gain 14.3 dBi
N-S peak 12.2 dBi at Zen 10.1
N-S -3 dB beamwidth 14.9 deg.

ERP 54.5 MW

Peak gain 19.1 dBi at Az 179 Zen 10
LHCP gain 10.5 dBi
N-S peak 19.1 dBi at Zen -9.7
N-S -3 dB beamwidth 14.5 deg.