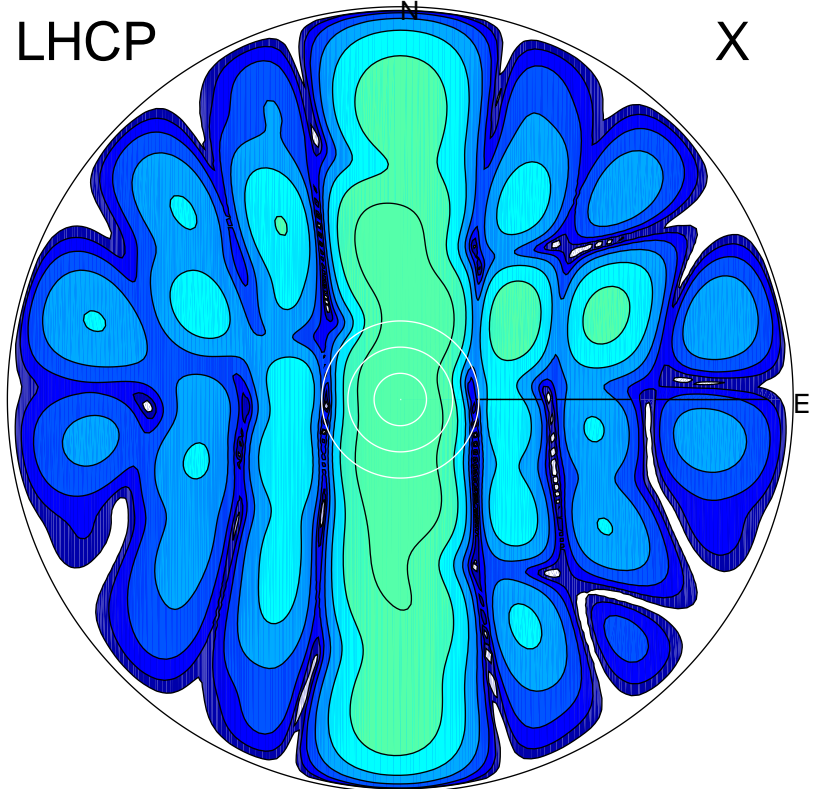


2015-03-04 09:41:00 A3 5.42300000 MHz 717.0 kW

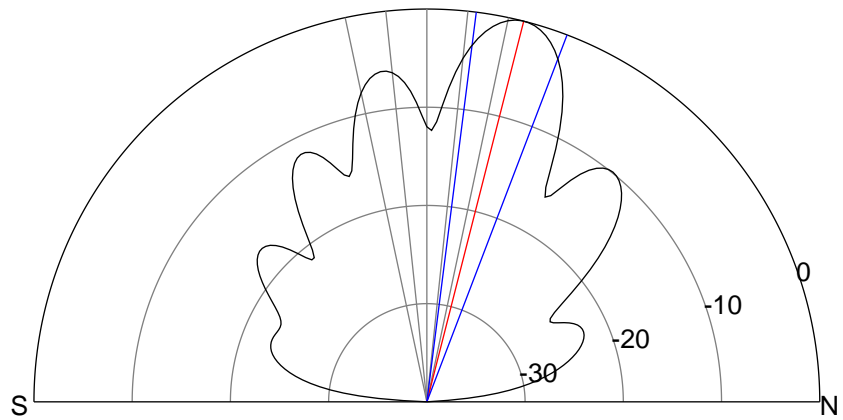
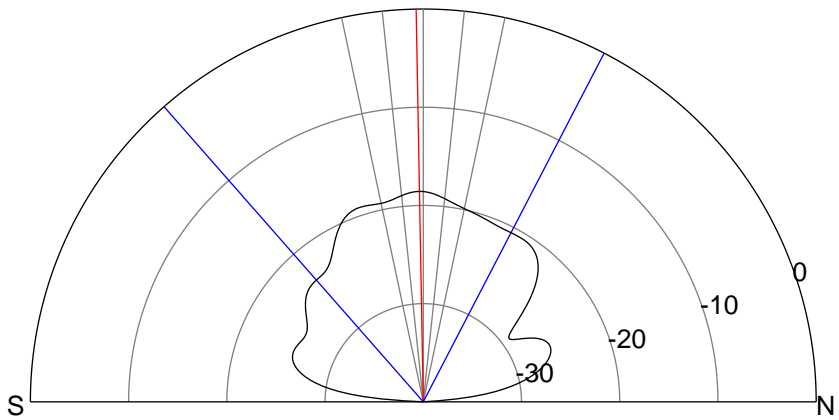
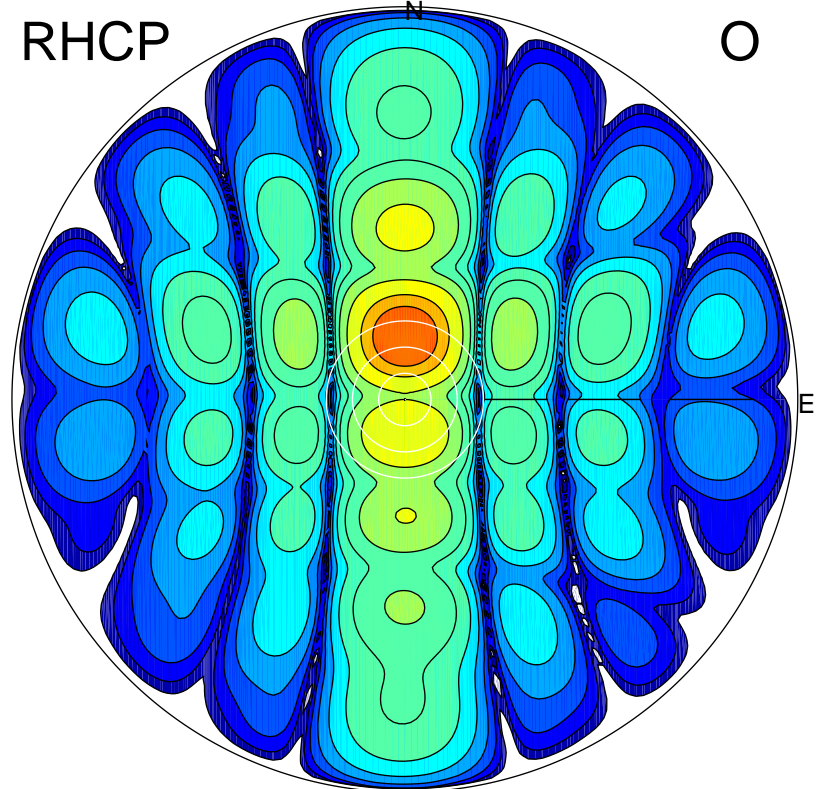
LHCP

X



RHCP

O



### ERP 1.3 MW

Peak gain 2.4 dBi at Az 187 Zen 1  
RHCP gain 10.2 dBi  
N-S peak 2.4 dBi at Zen -1.0  
N-S -3 dB beamwidth 68.7 deg.

### ERP 89.7 MW

Peak gain 21.0 dBi at Az 0 Zen 14  
LHCP gain 0.9 dBi  
N-S peak 21.0 dBi at Zen 14.3  
N-S -3 dB beamwidth 13.7 deg.