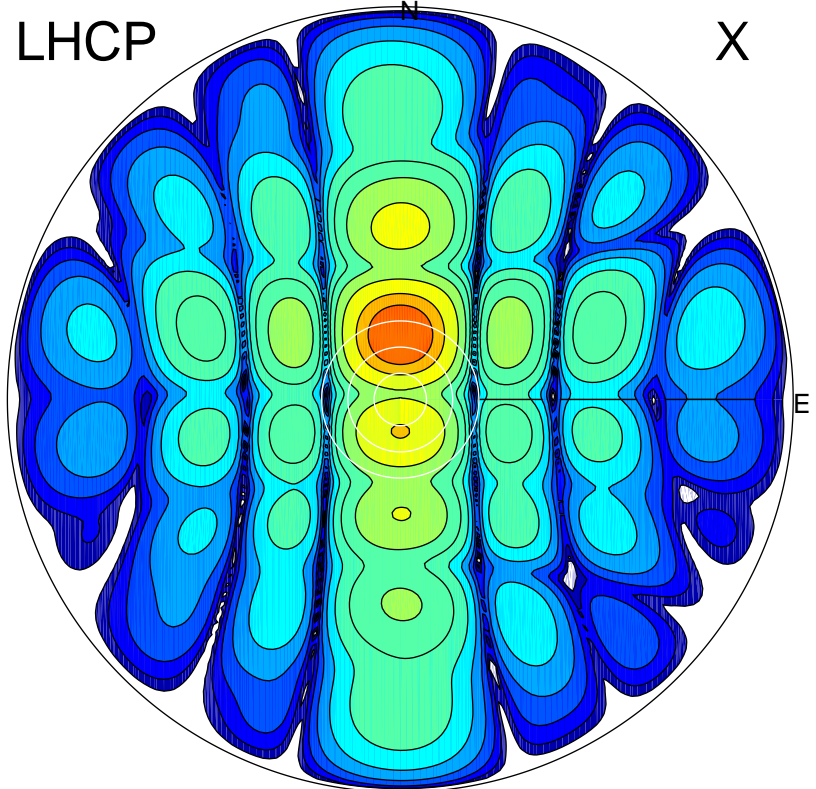


2015-03-04 09:11:00 A3 5.42300000 MHz 692.0 kW

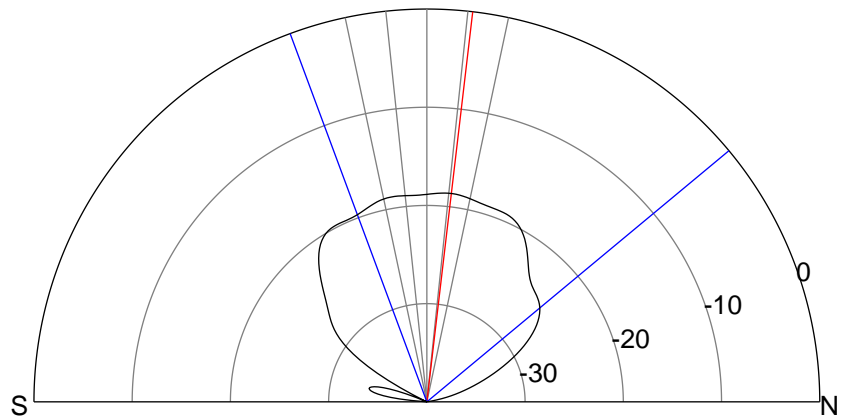
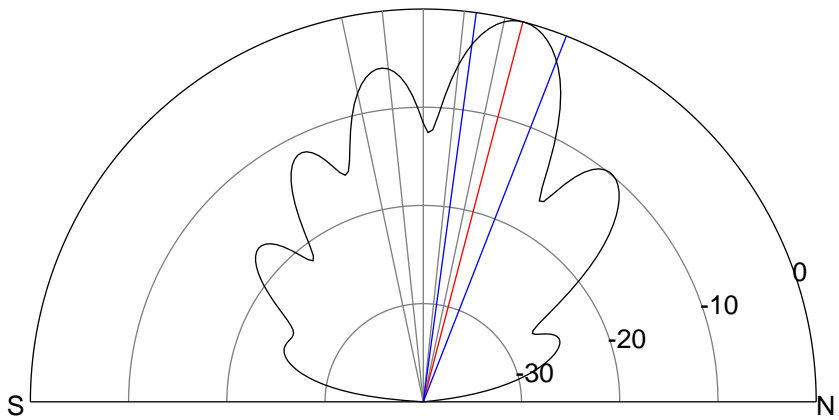
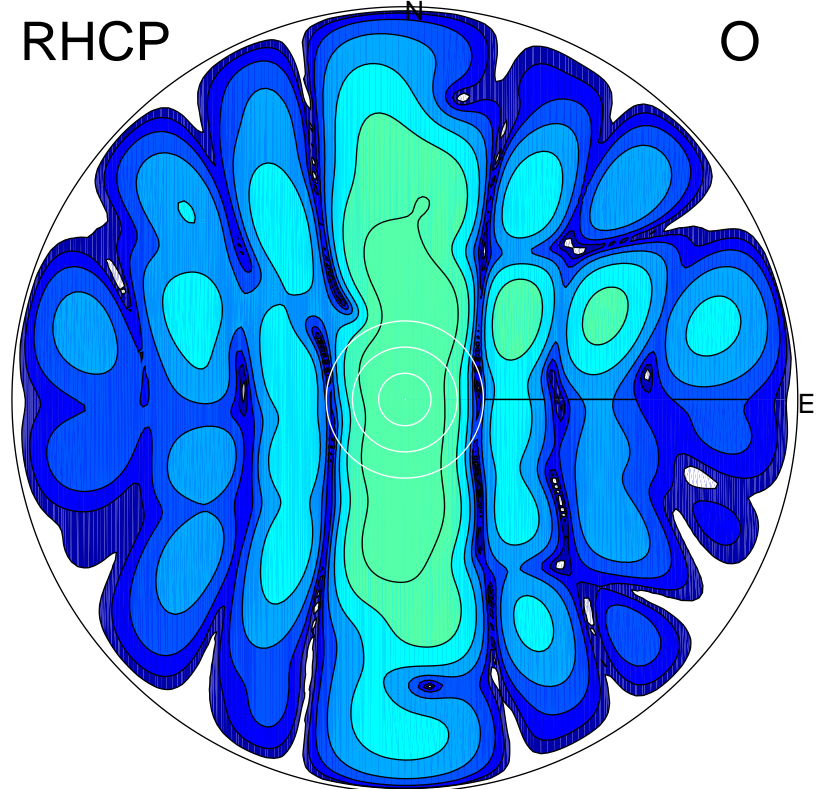
LHCP

X



RHCP

O



### ERP 86.8 MW

Peak gain 21.0 dBi at Az 359 Zen 15  
RHCP gain 1.8 dBi  
N-S peak 21.0 dBi at Zen 14.7  
N-S -3 dB beamwidth 13.6 deg.

### ERP 1.3 MW

Peak gain 2.8 dBi at Az 12 Zen 19  
LHCP gain 19.3 dBi  
N-S peak 2.3 dBi at Zen 6.7  
N-S -3 dB beamwidth 70.6 deg.