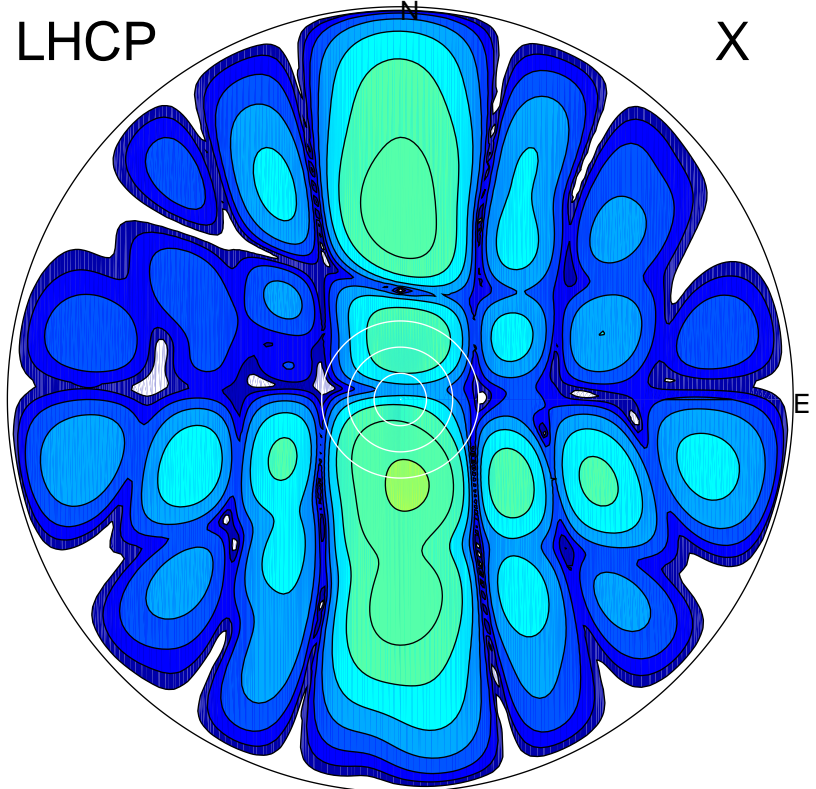


2015-02-16 16:51:15 A3 5.42300000 MHz 823.0 kW

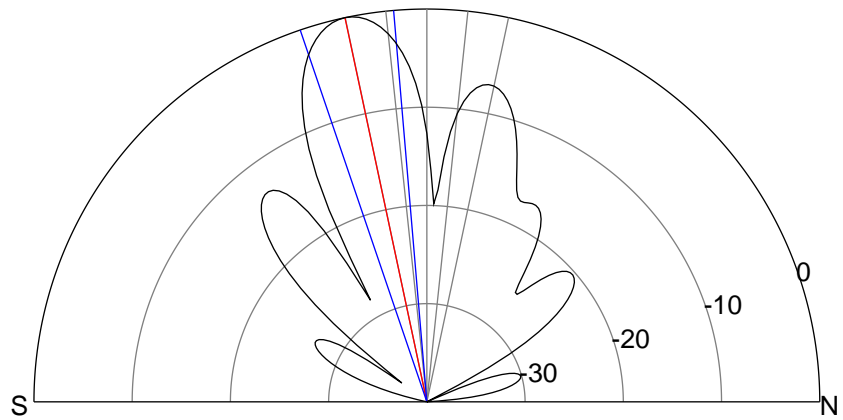
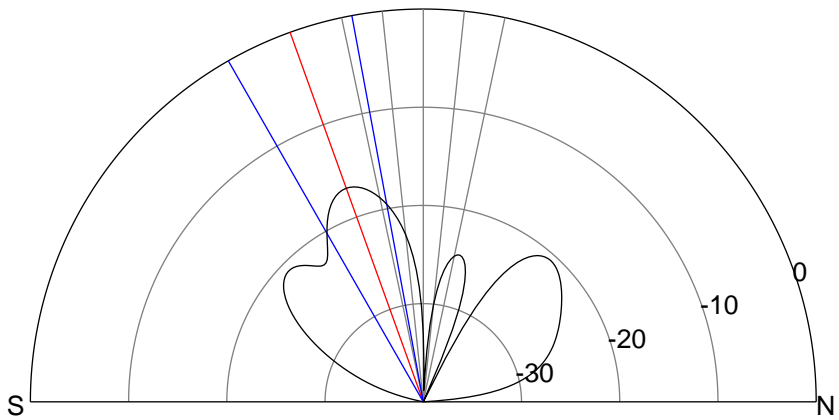
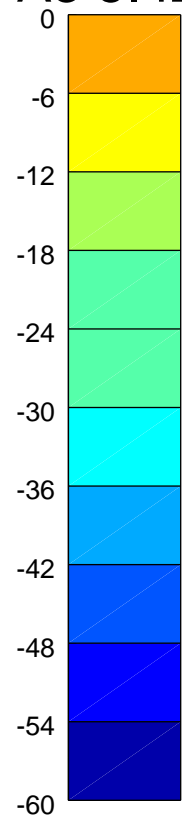
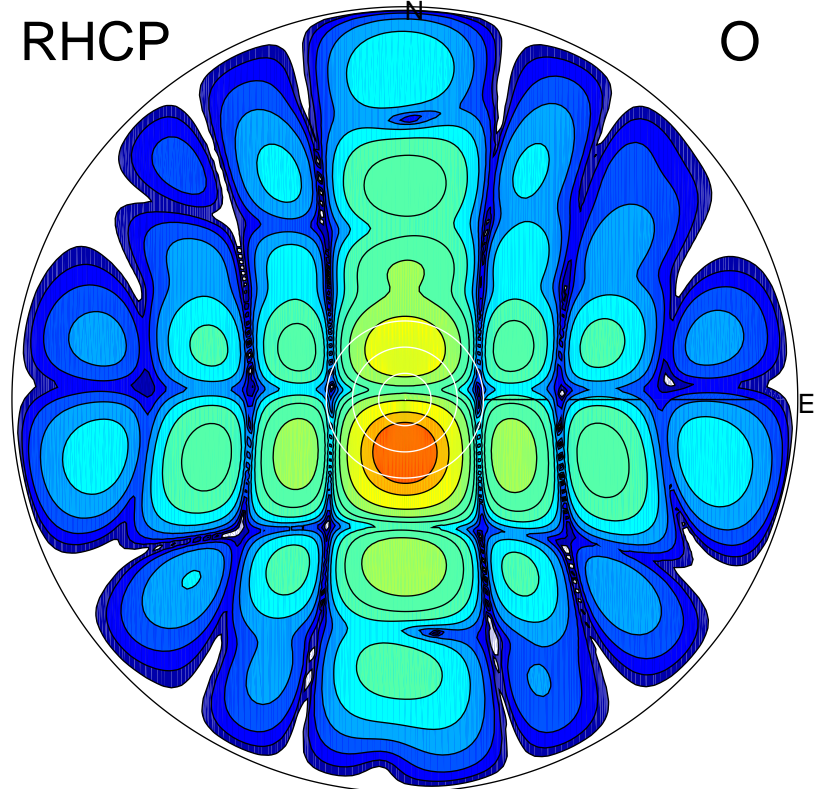
LHCP

X



RHCP

O



ERP 2.5 MW

Peak gain 4.8 dBi at Az 175 Zen 20
RHCP gain 17.7 dBi
N-S peak 4.6 dBi at Zen -19.8
N-S -3 dB beamwidth 19.3 deg.

ERP 115.9 MW

Peak gain 21.5 dBi at Az 180 Zen 12
LHCP gain 2.7 dBi
N-S peak 21.5 dBi at Zen -12.0
N-S -3 dB beamwidth 14.0 deg.