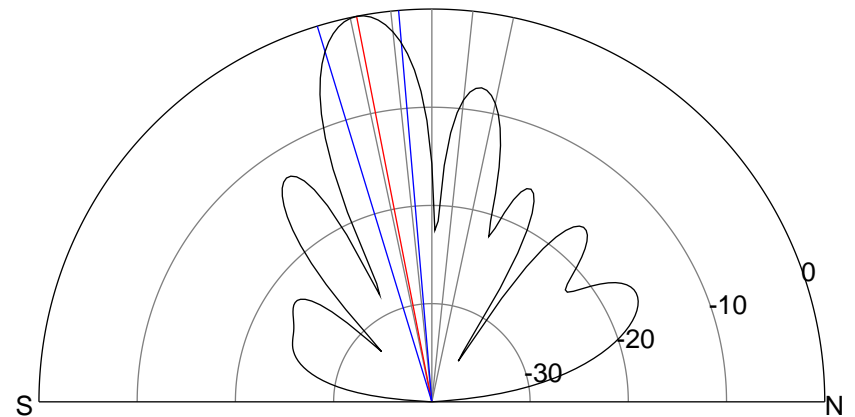
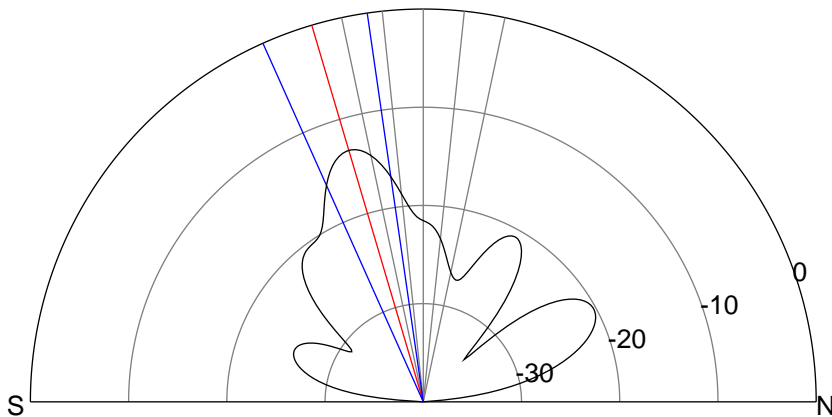
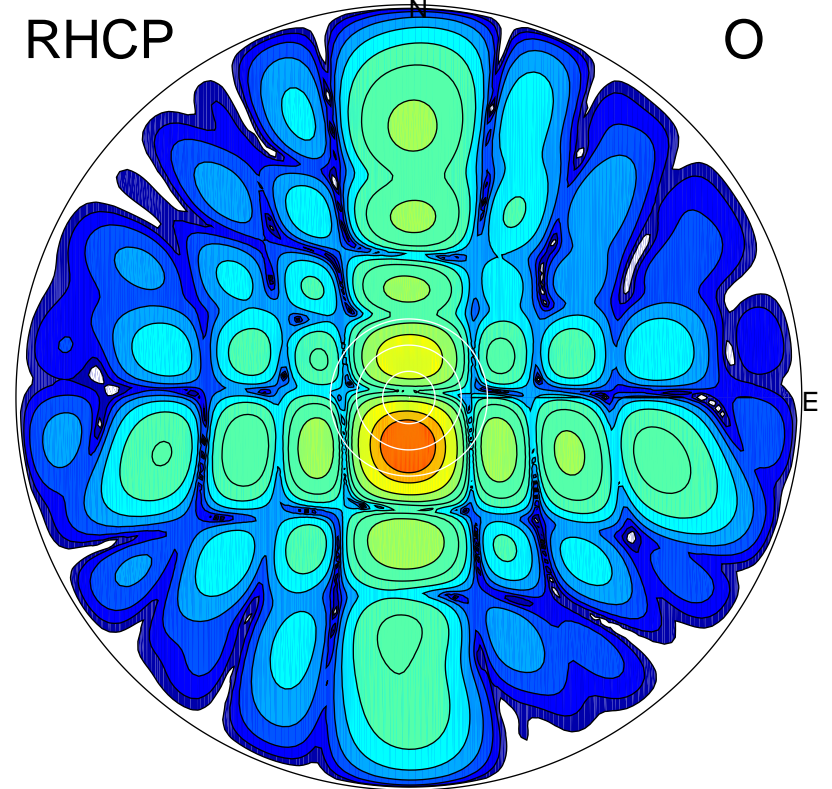
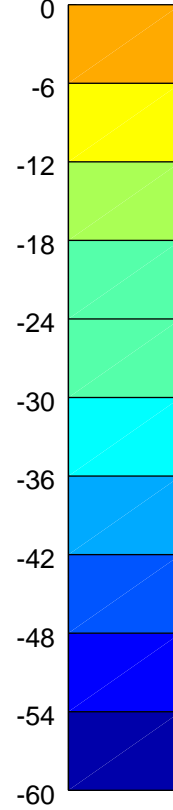
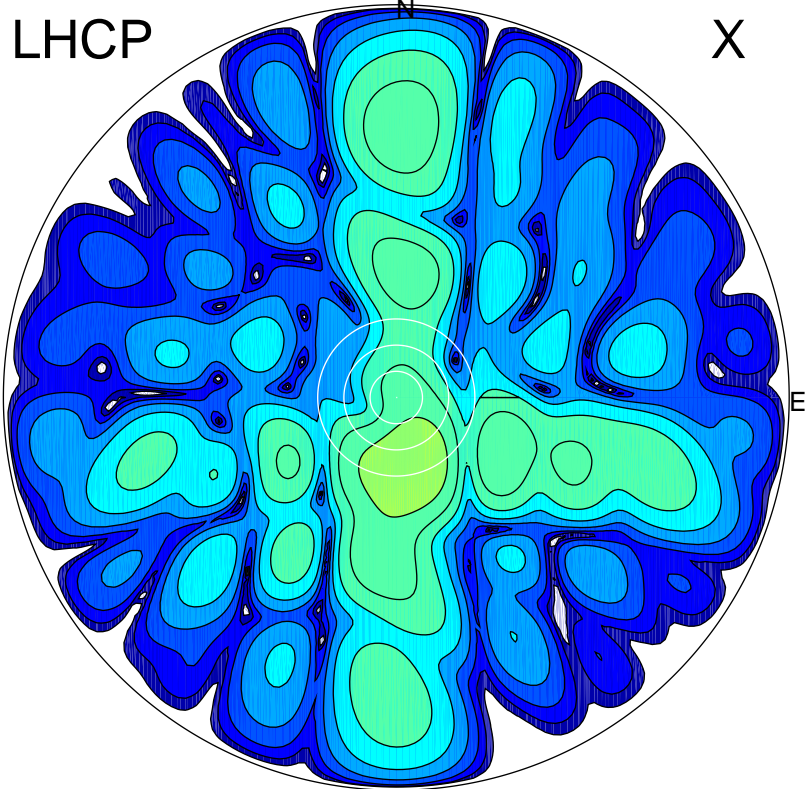


2015-02-16 16:00:20 A3 6.20000000 MHz 806.0 kW



### ERP 7.6 MW

Peak gain 9.8 dBi at Az 166 Zen 16  
RHCP gain 19.7 dBi  
N-S peak 9.0 dBi at Zen -16.5  
N-S -3 dB beamwidth 15.9 deg.

### ERP 138.2 MW

Peak gain 22.3 dBi at Az 182 Zen 11  
LHCP gain 7.3 dBi  
N-S peak 22.3 dBi at Zen -11.0  
N-S -3 dB beamwidth 12.1 deg.