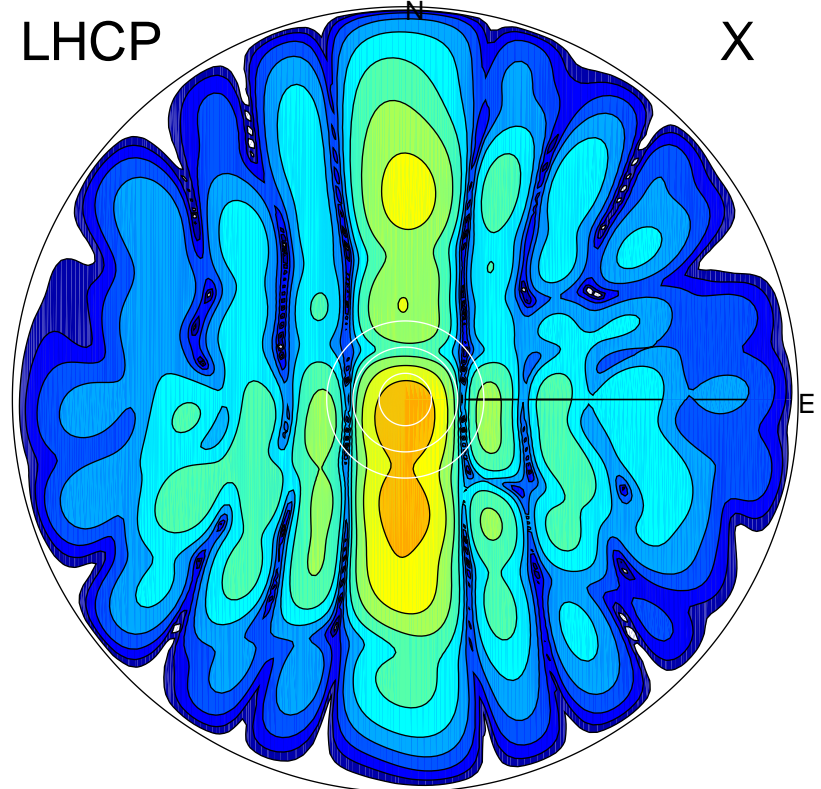


2015-02-02 14:10:06 A2 4.91285800 MHz 542.0 kW

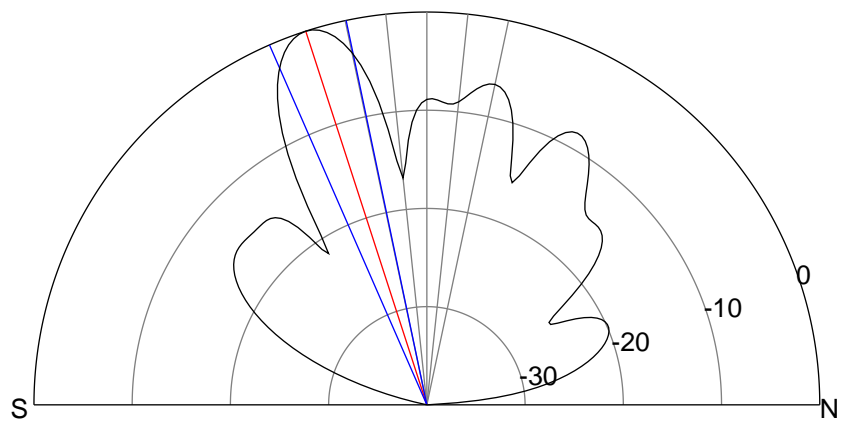
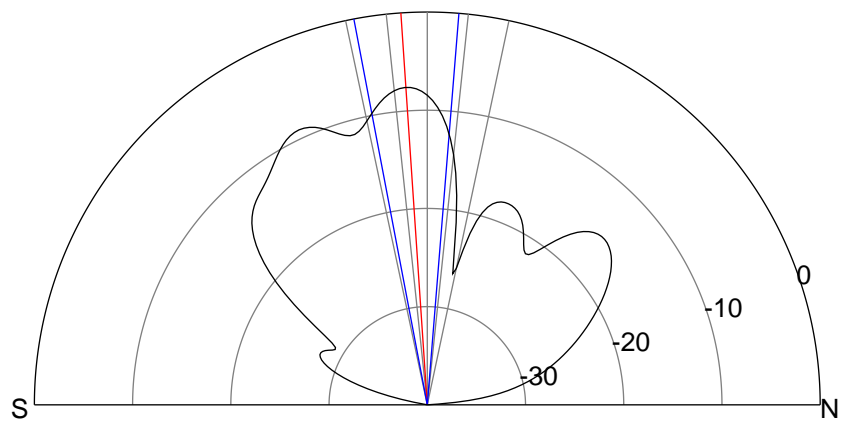
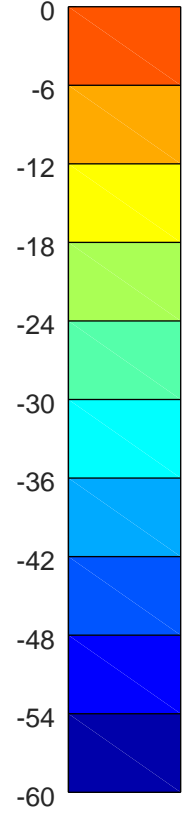
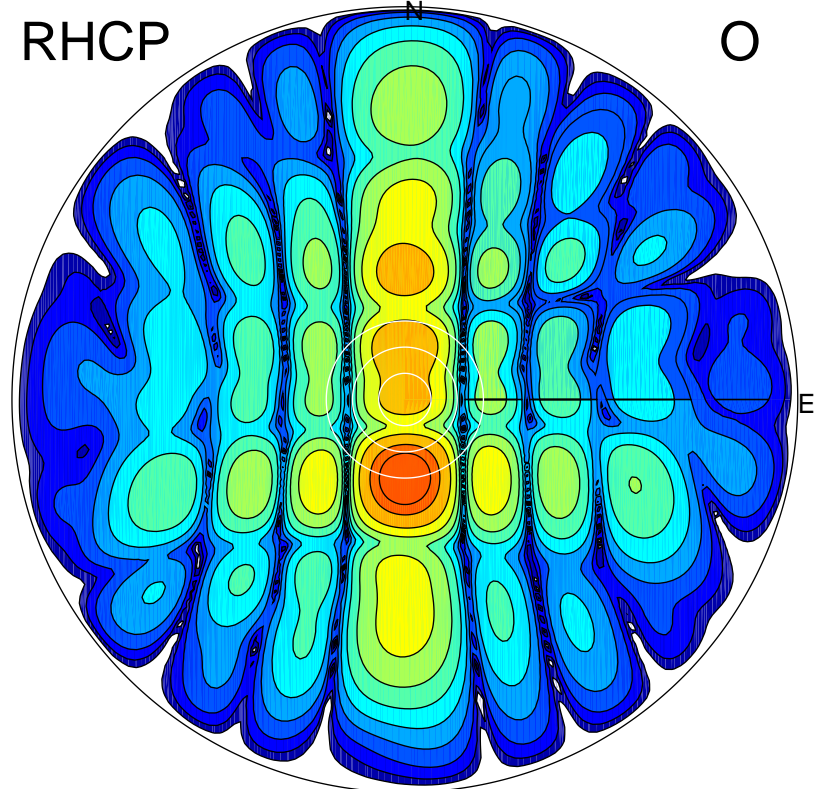
LHCP

X



RHCP

O



ERP 12.3 MW

Peak gain 13.6 dBi at Az 182 Zen 4
RHCP gain 8.2 dBi
N-S peak 13.6 dBi at Zen -3.9
N-S -3 dB beamwidth 15.4 deg.

ERP 70.9 MW

Peak gain 21.2 dBi at Az 180 Zen 18
LHCP gain 10.2 dBi
N-S peak 21.2 dBi at Zen -18.0
N-S -3 dB beamwidth 11.8 deg.