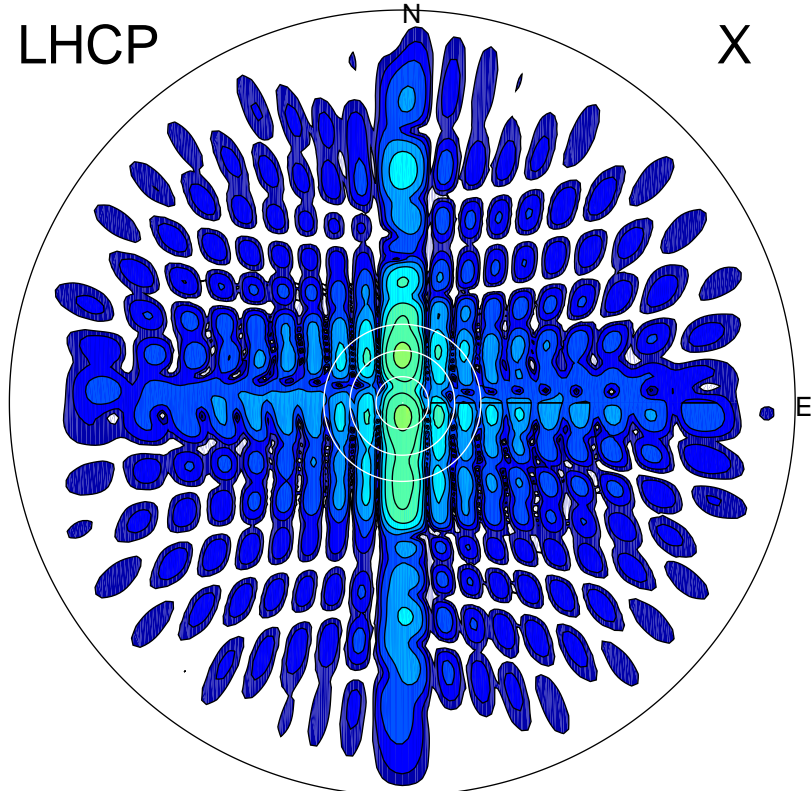


2014-11-29 11:45:01 A1 7.95300000 MHz 705.0 kW

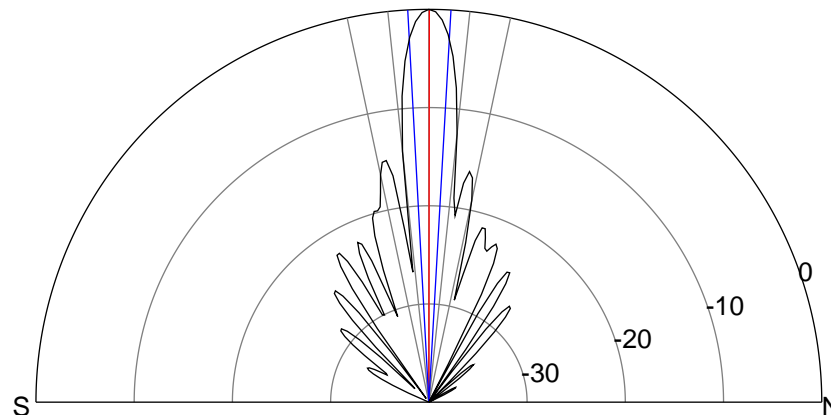
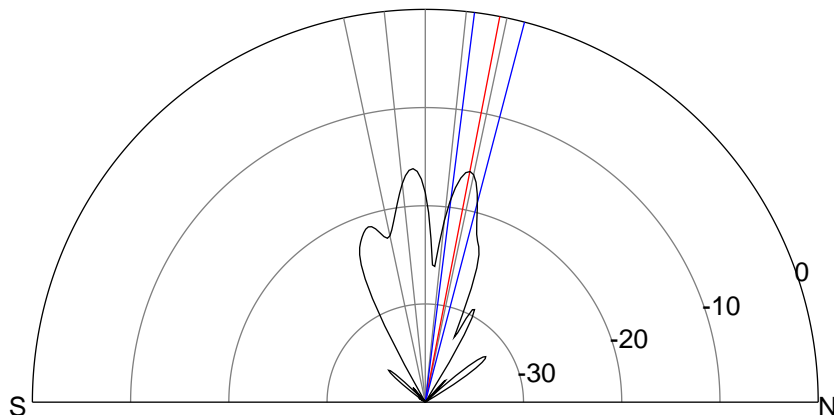
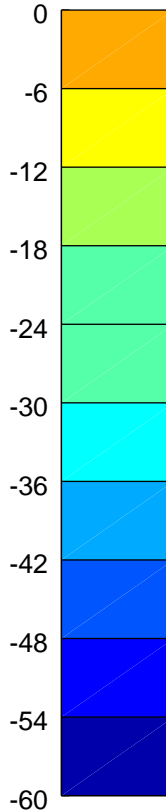
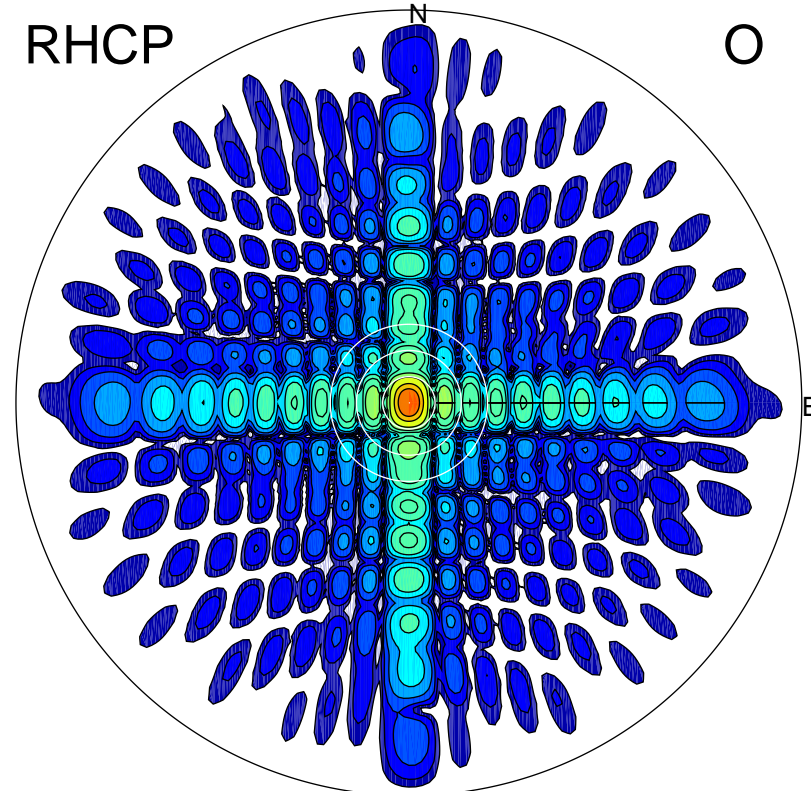
LHCP

X



RHCP

O



ERP 16.9 MW

Peak gain 13.8 dBi at Az 0 Zen 11
RHCP gain 13.1 dBi
N-S peak 13.8 dBi at Zen 10.9
N-S -3 dB beamwidth 7.4 deg.

ERP 685.7 MW

Peak gain 29.9 dBi at Az 78 Zen 0
LHCP gain 11.2 dBi
N-S peak 29.9 dBi at Zen 0.1
N-S -3 dB beamwidth 6.3 deg.