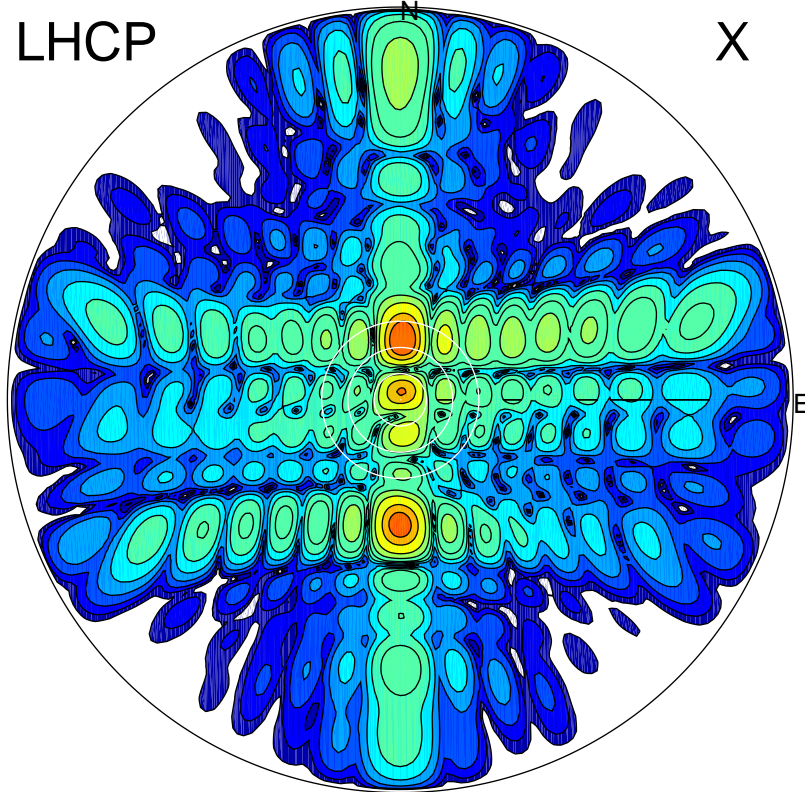


2014-11-29 11:05:01 A1 6.30000000 MHz 753.0 kW

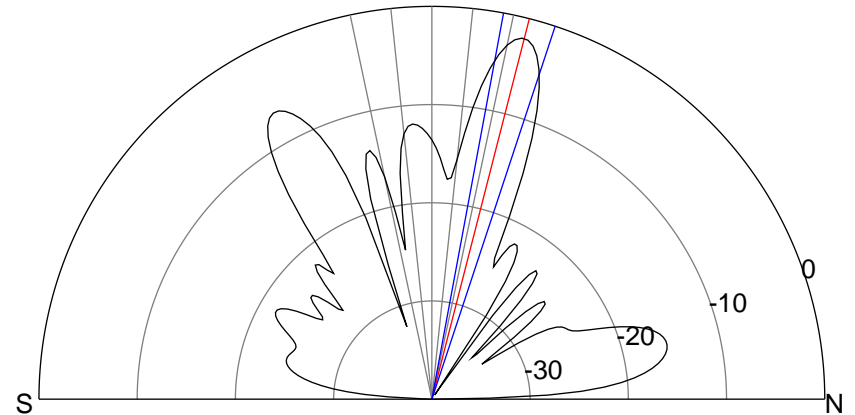
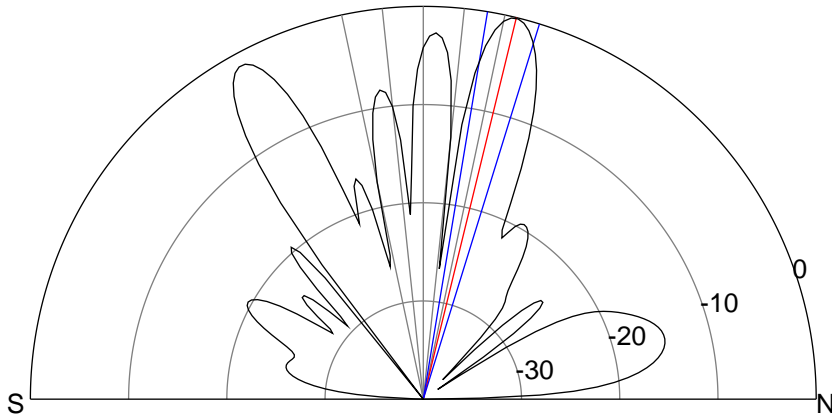
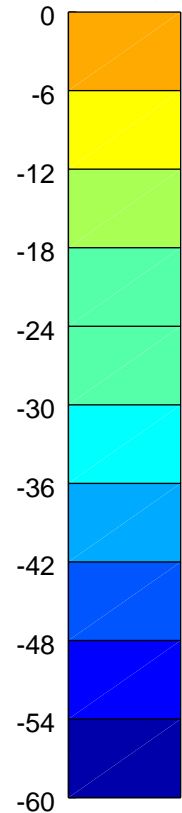
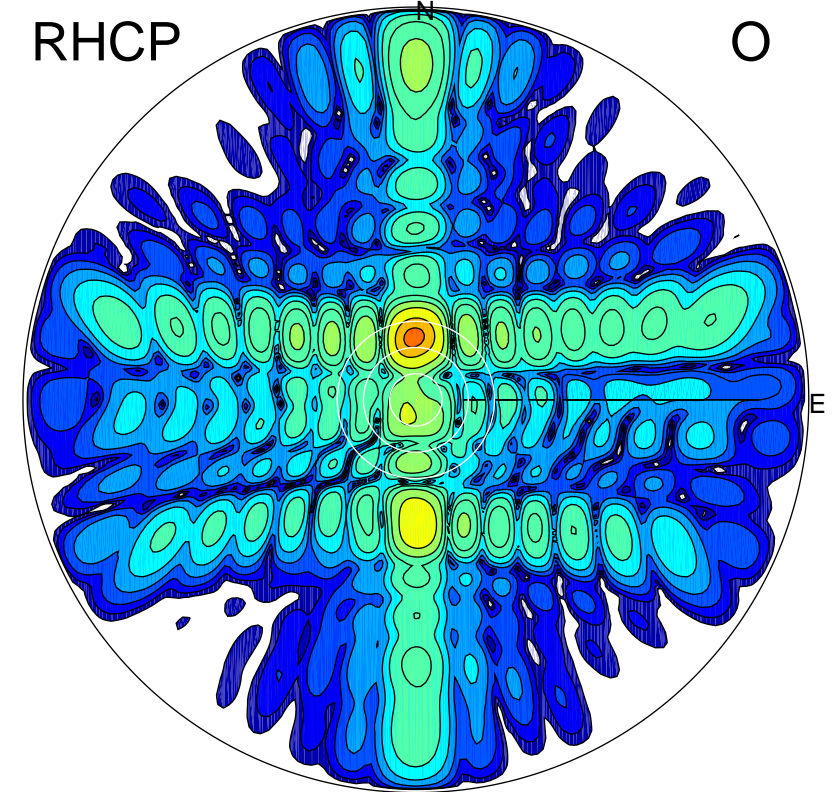
LHCP

X



RHCP

O



ERP 142.7 MW

Peak gain 22.8 dBi at Az 2 Zen 14
RHCP gain 20.5 dBi
N-S peak 22.7 dBi at Zen 13.7
N-S -3 dB beamwidth 7.8 deg.

ERP 88.7 MW

Peak gain 20.7 dBi at Az 358 Zen 14
LHCP gain 22.4 dBi
N-S peak 20.7 dBi at Zen 14.4
N-S -3 dB beamwidth 7.8 deg.