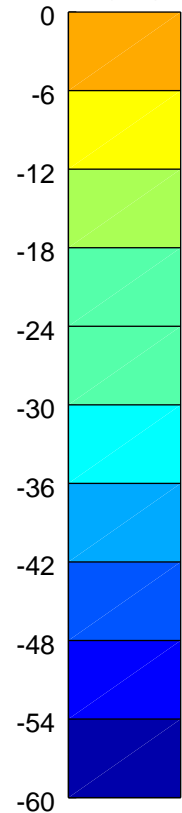
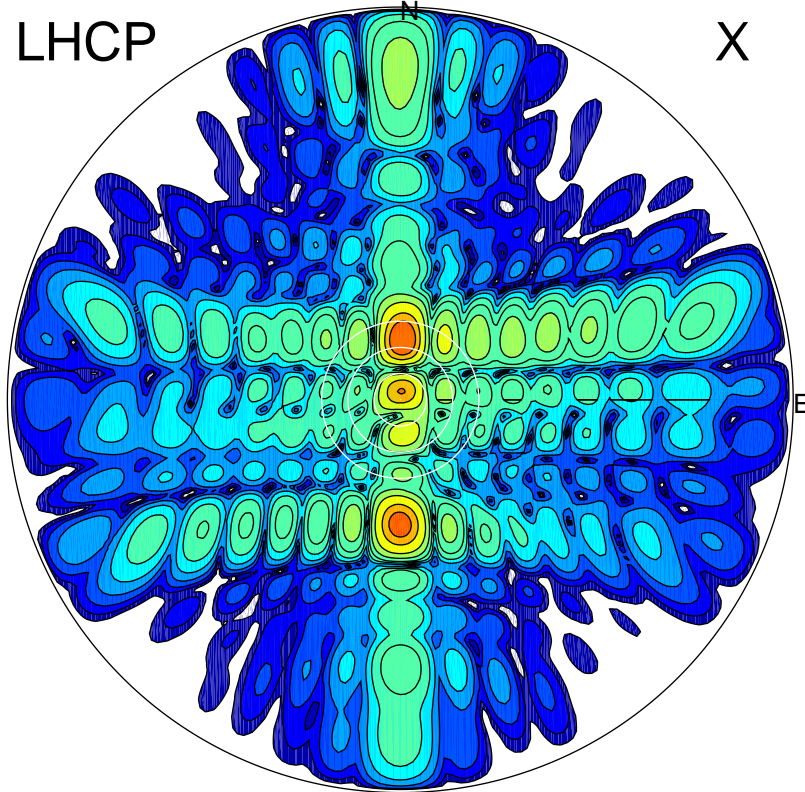


2014-11-29 10:53:06 A1 6.30000000 MHz 756.0 kW

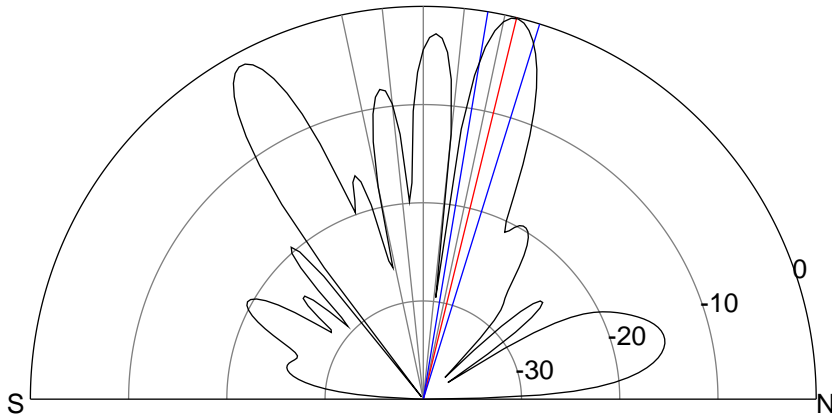
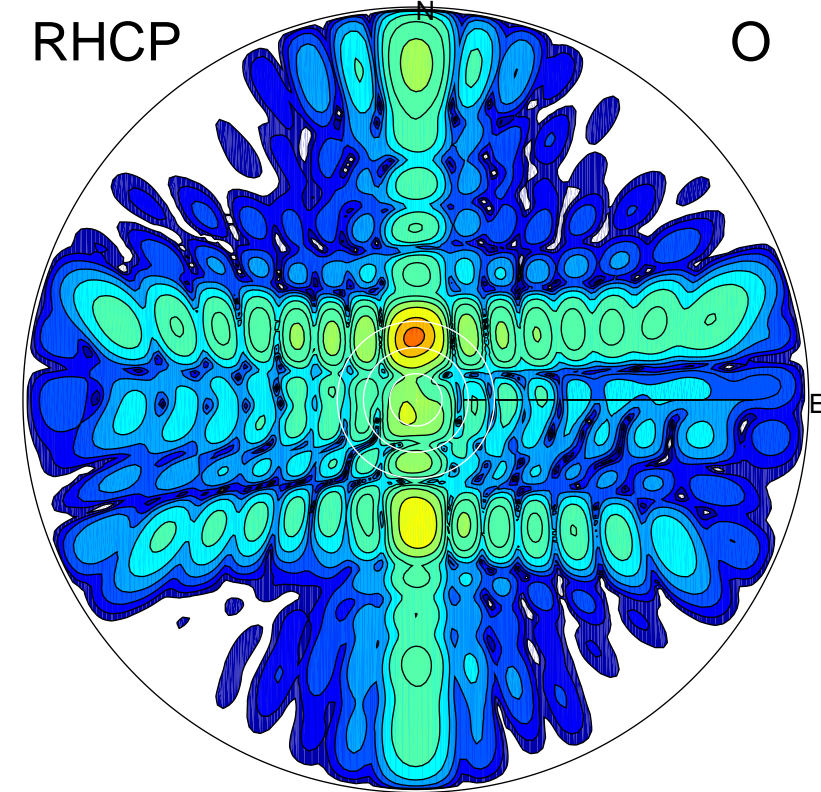
LHCP

X



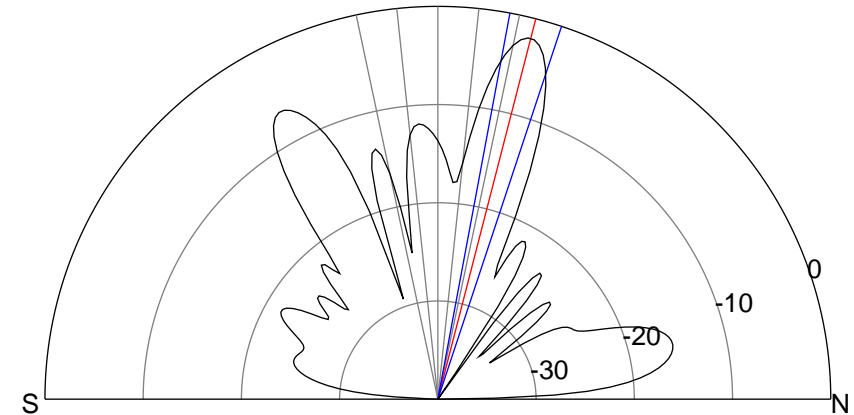
RHCP

O



ERP 143.0 MW

Peak gain 22.8 dBi at Az 2 Zen 14
RHCP gain 20.6 dBi
N-S peak 22.7 dBi at Zen 13.8
N-S -3 dB beamwidth 7.8 deg.



ERP 89.3 MW

Peak gain 20.7 dBi at Az 358 Zen 14
LHCP gain 22.4 dBi
N-S peak 20.7 dBi at Zen 14.4
N-S -3 dB beamwidth 7.8 deg.