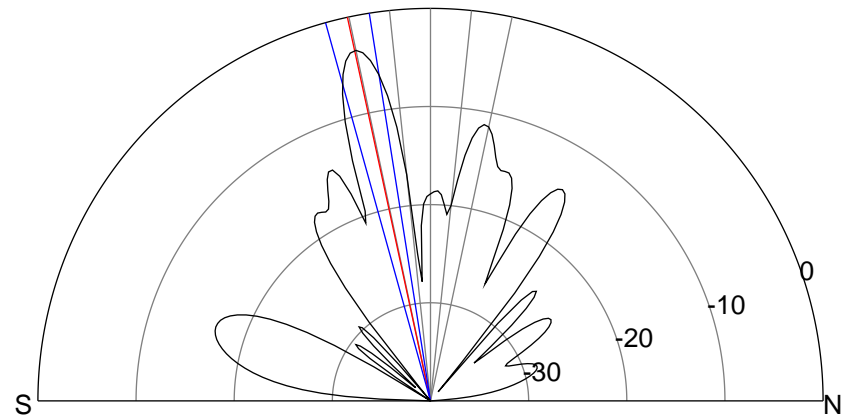
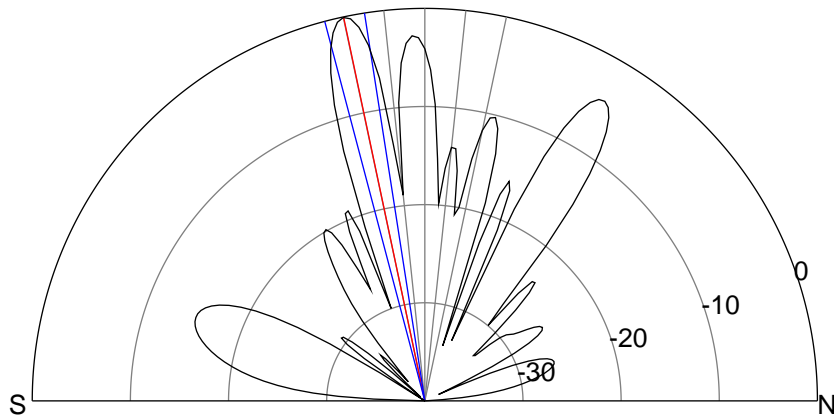
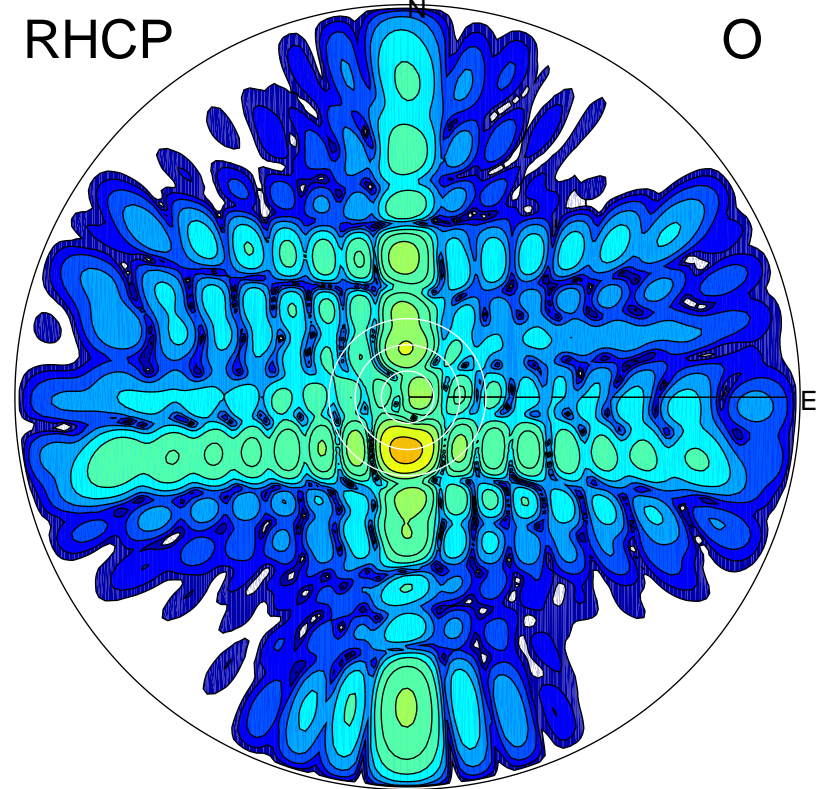
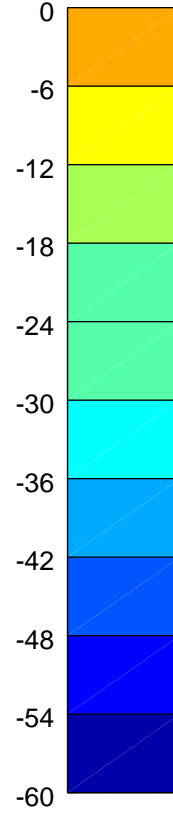
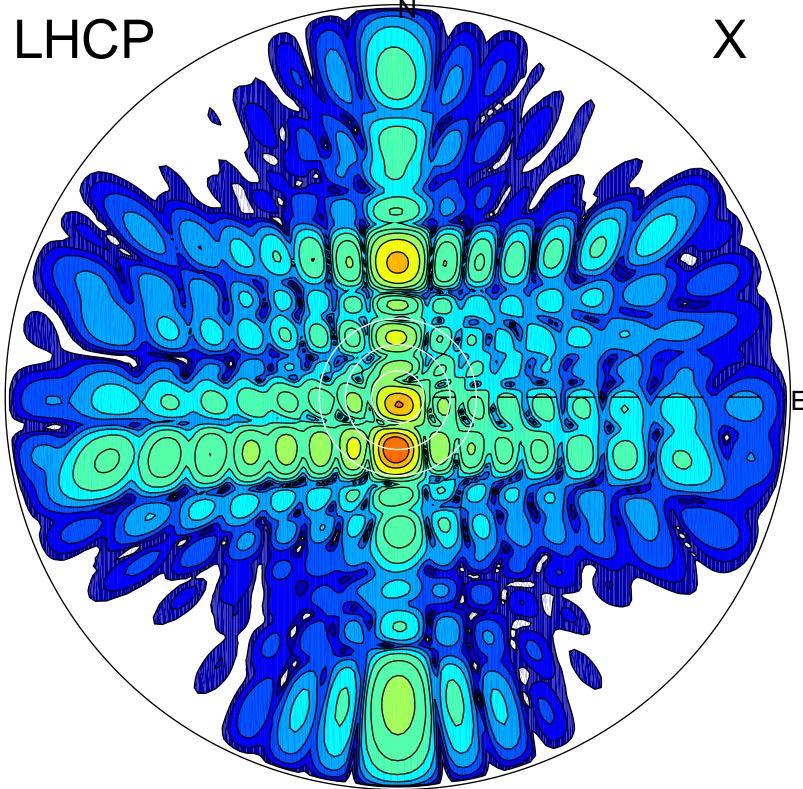


2014-11-25 13:53:45 A1 6.30000000 MHz 819.0 kW



### ERP 243.6 MW

Peak gain 24.7 dBi at Az 182 Zen 12  
RHCP gain 21.3 dBi  
N-S peak 24.7 dBi at Zen -11.9  
N-S -3 dB beamwidth 5.9 deg.

### ERP 110.1 MW

Peak gain 21.3 dBi at Az 182 Zen 12  
LHCP gain 24.7 dBi  
N-S peak 21.3 dBi at Zen -12.2  
N-S -3 dB beamwidth 6.5 deg.