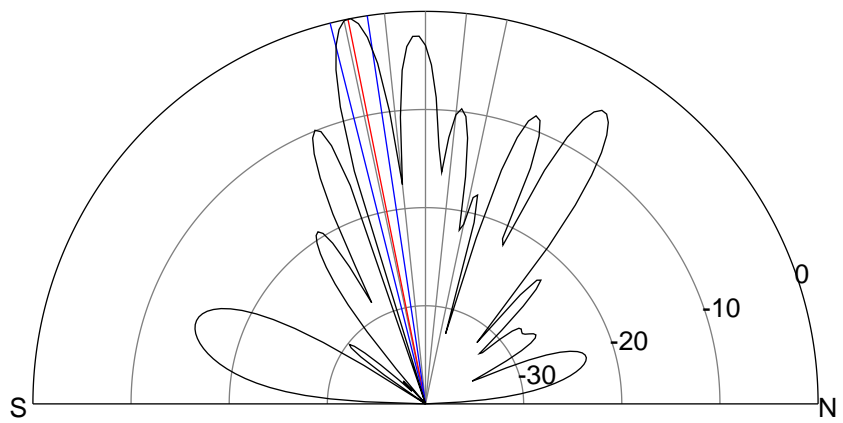
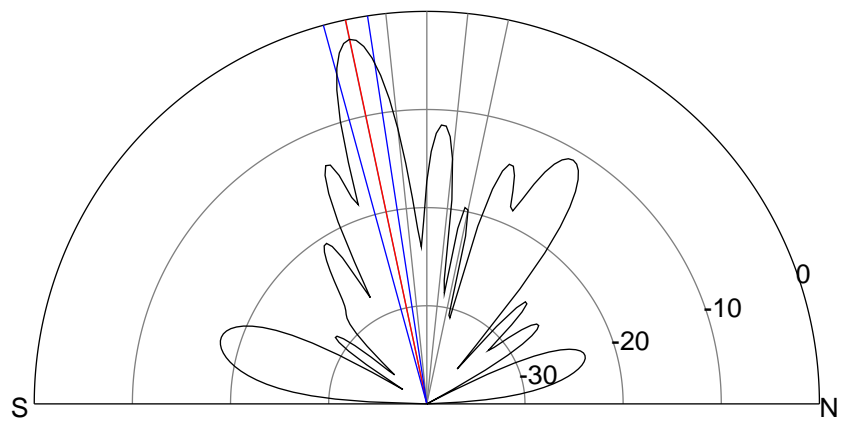
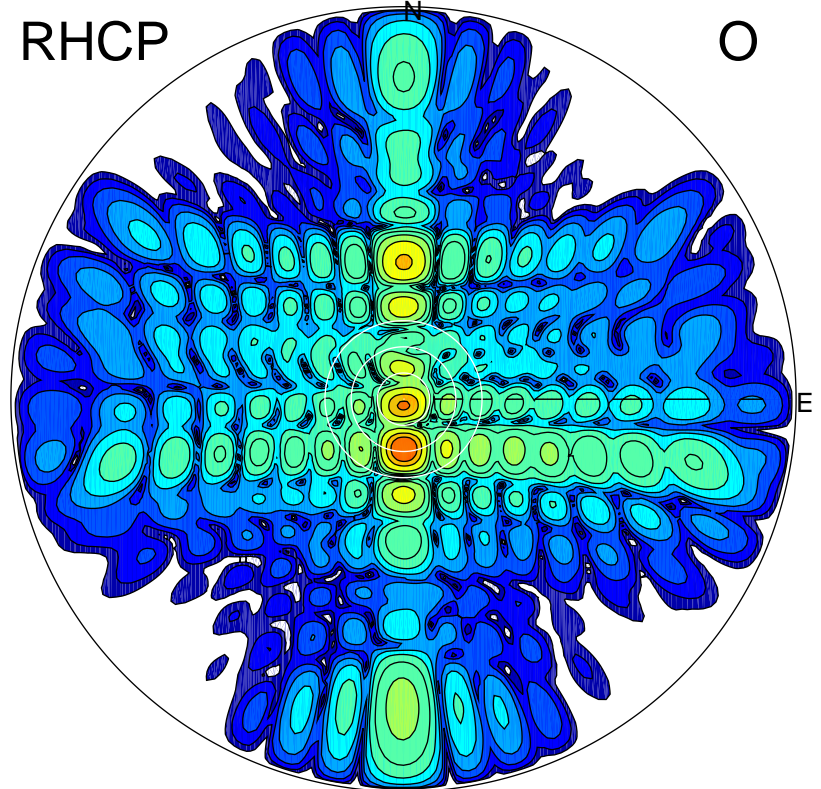
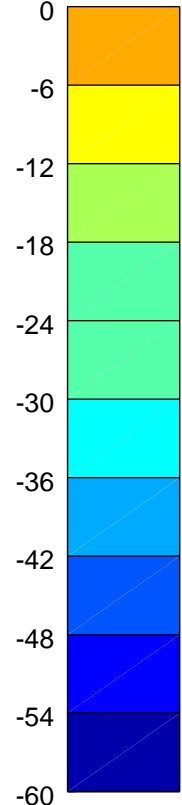
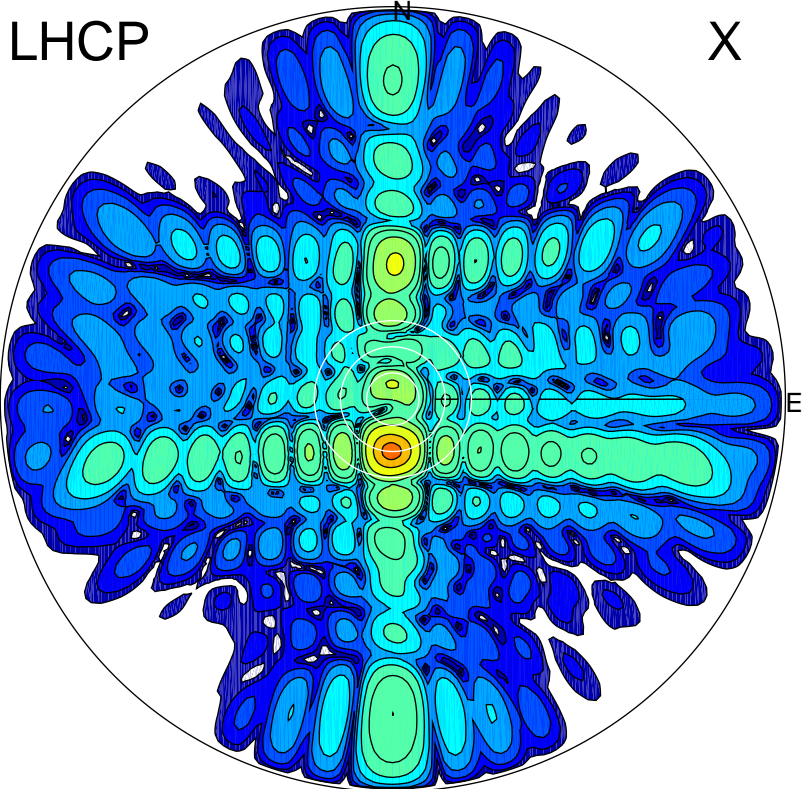


2014-11-25 13:49:50 A1 6.30000000 MHz 817.0 kW



### ERP 141.0 MW

Peak gain 22.4 dBi at Az 182 Zen 12  
RHCP gain 24.2 dBi  
N-S peak 22.3 dBi at Zen -11.9  
N-S -3 dB beamwidth 6.6 deg.

### ERP 223.5 MW

Peak gain 24.4 dBi at Az 179 Zen 11  
LHCP gain 22.1 dBi  
N-S peak 24.4 dBi at Zen -11.4  
N-S -3 dB beamwidth 5.5 deg.