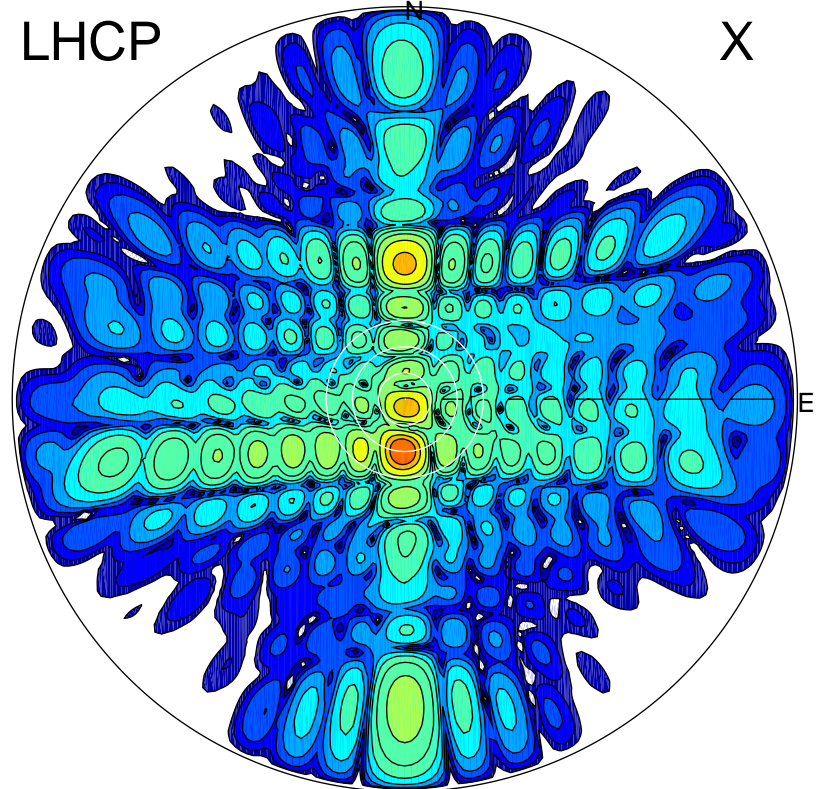


2014-11-25 12:43:15 A1 6.30000000 MHz 821.0 kW

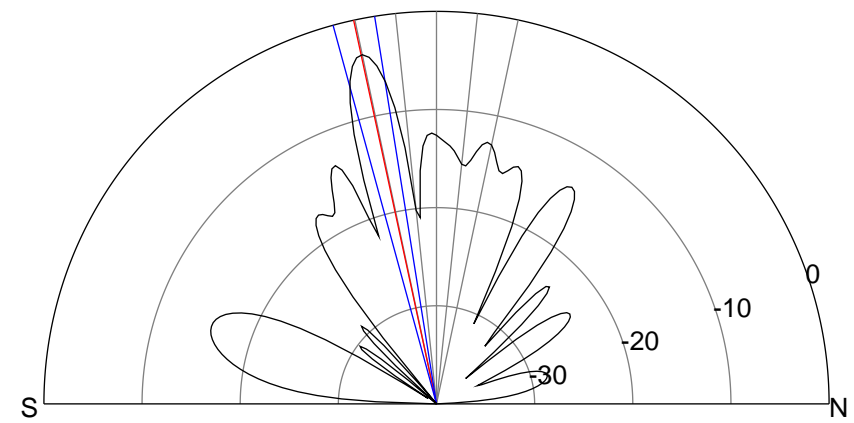
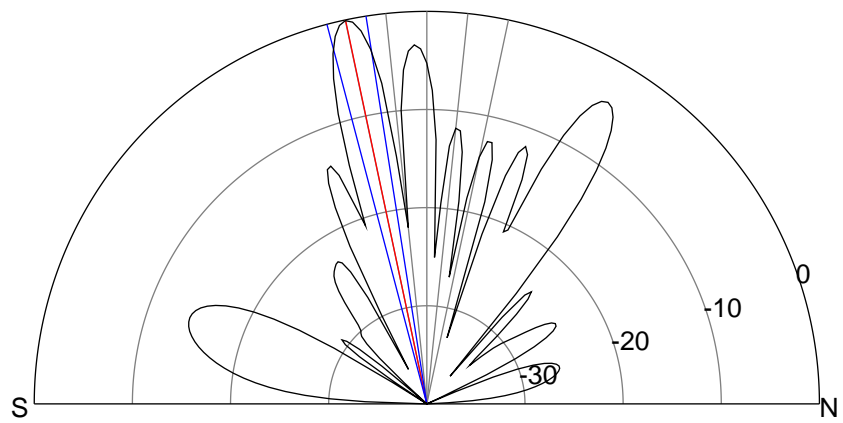
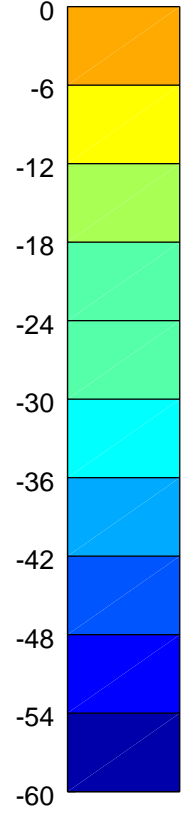
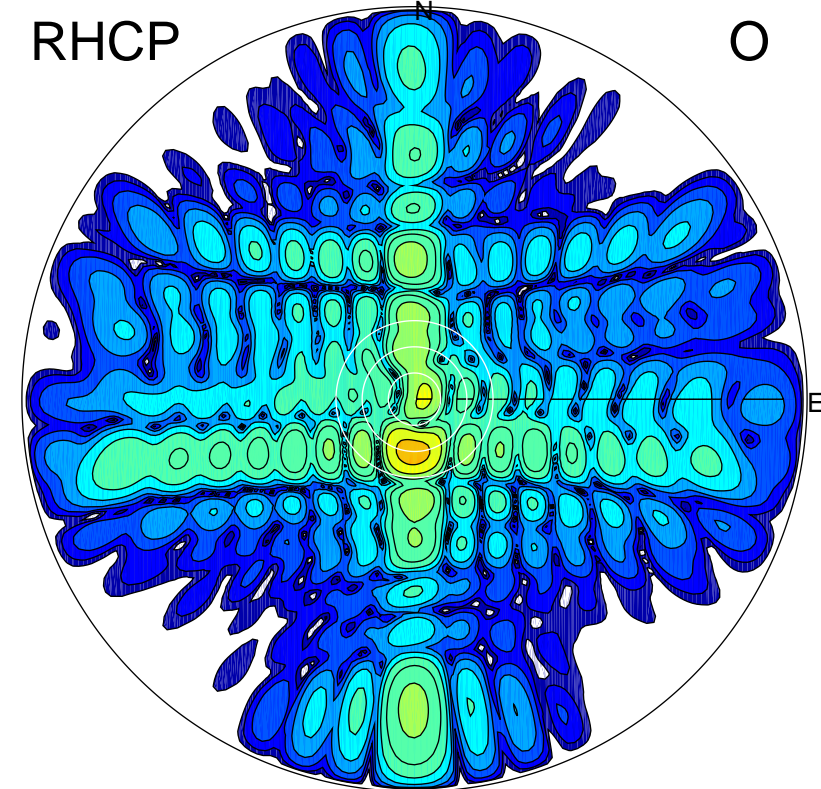
LHCP

X



RHCP

O



### ERP 235.7 MW

Peak gain 24.6 dBi at Az 182 Zen 12  
RHCP gain 21.0 dBi  
N-S peak 24.5 dBi at Zen -12.0  
N-S -3 dB beamwidth 5.8 deg.

### ERP 103.4 MW

Peak gain 21.0 dBi at Az 183 Zen 12  
LHCP gain 24.6 dBi  
N-S peak 21.0 dBi at Zen -12.2  
N-S -3 dB beamwidth 6.2 deg.