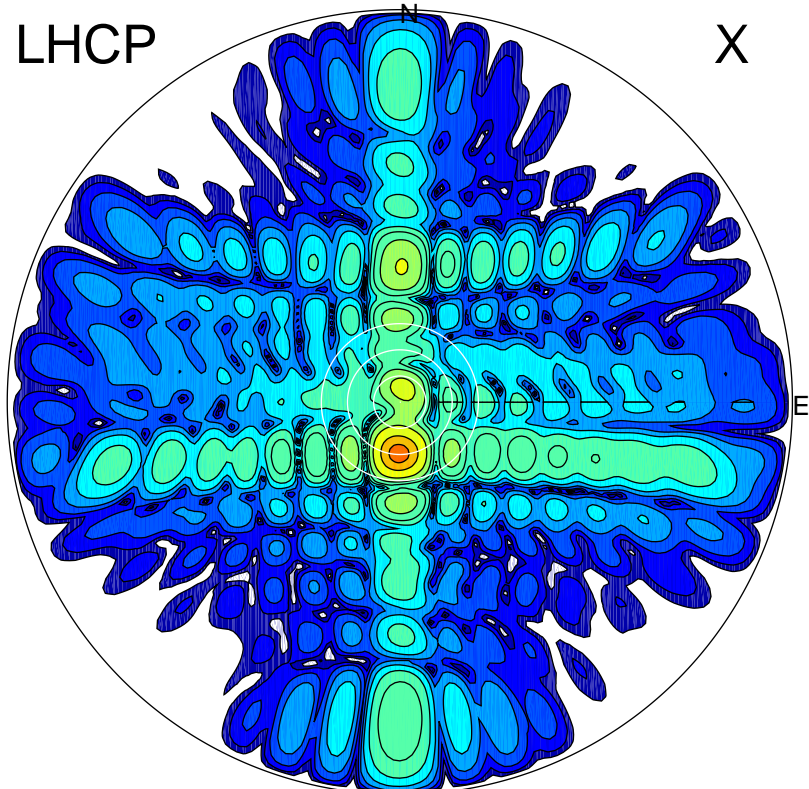


2014-11-25 12:40:20 A1 6.30000000 MHz 818.0 kW

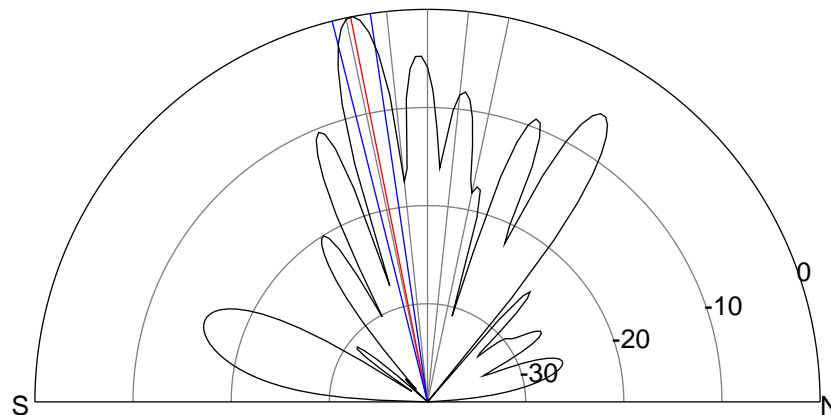
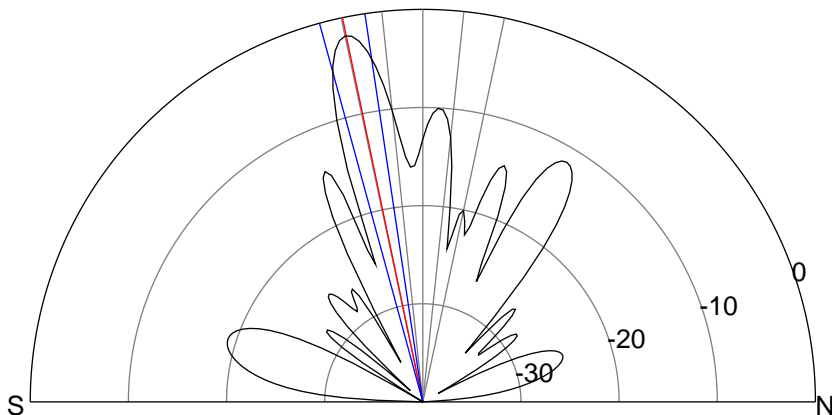
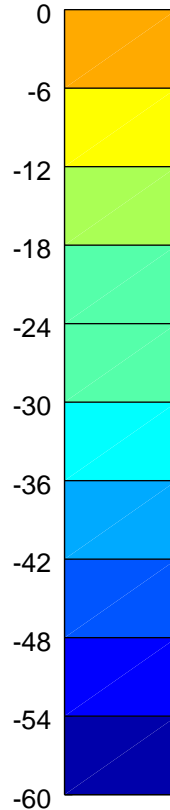
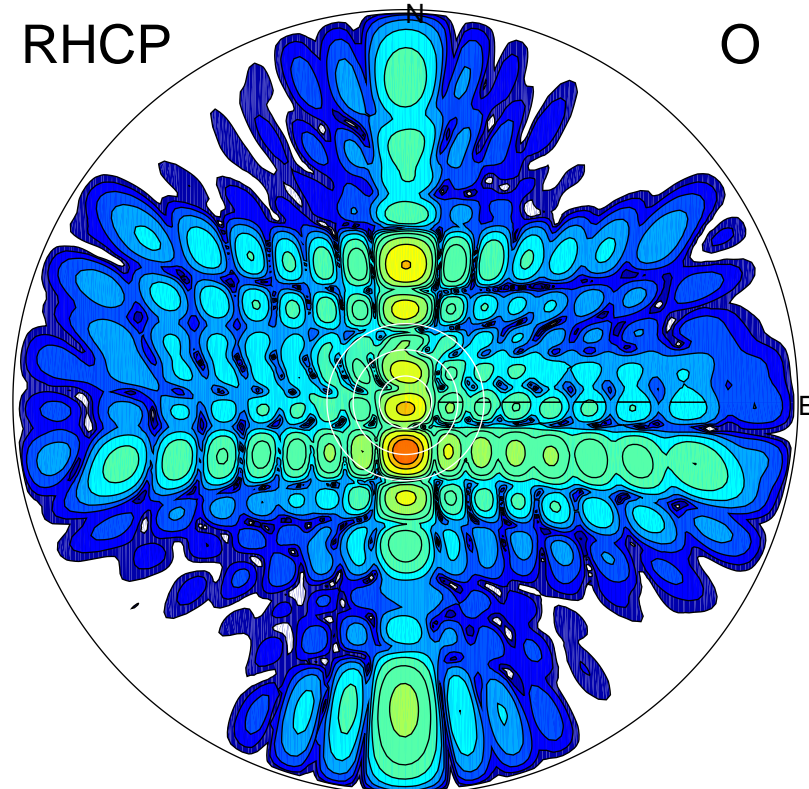
LHCP

X



RHCP

O



ERP 156.9 MW

Peak gain 22.8 dBi at Az 181 Zen 12
RHCP gain 24.5 dBi
N-S peak 22.8 dBi at Zen -11.8
N-S -3 dB beamwidth 6.8 deg.

ERP 241.7 MW

Peak gain 24.7 dBi at Az 180 Zen 11
LHCP gain 22.7 dBi
N-S peak 24.7 dBi at Zen -11.3
N-S -3 dB beamwidth 5.7 deg.