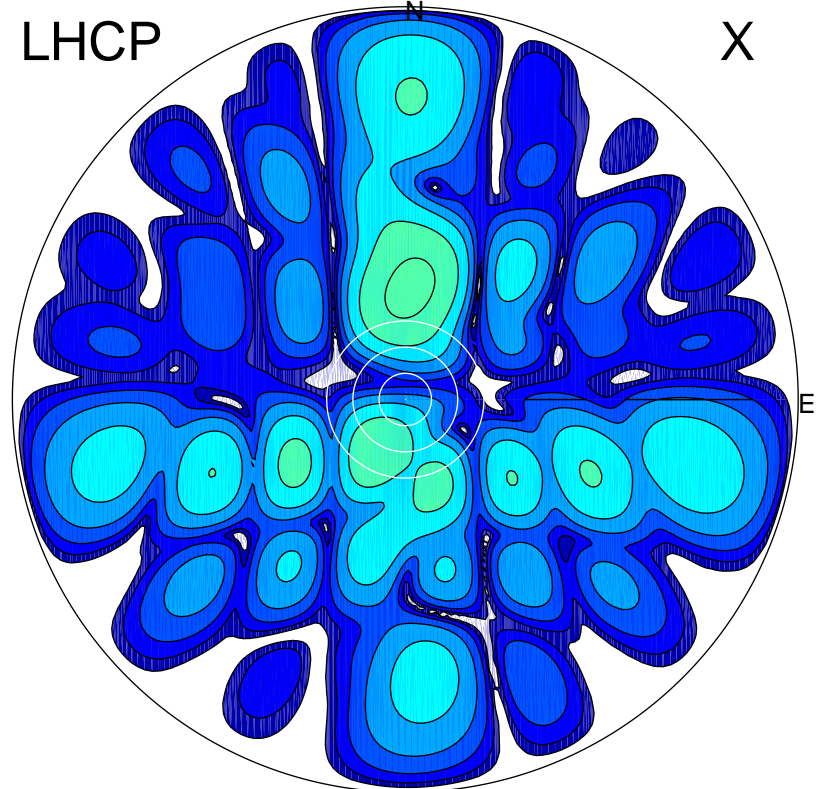


2014-11-24 14:34:00 A2 4.04000000 MHz 893.0 kW

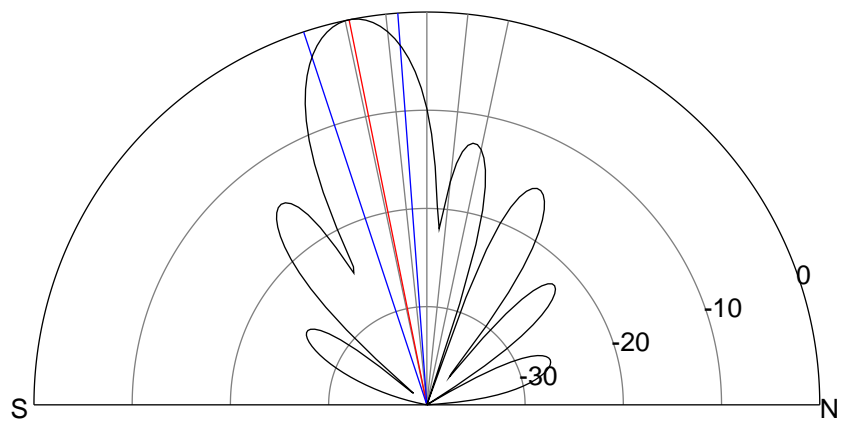
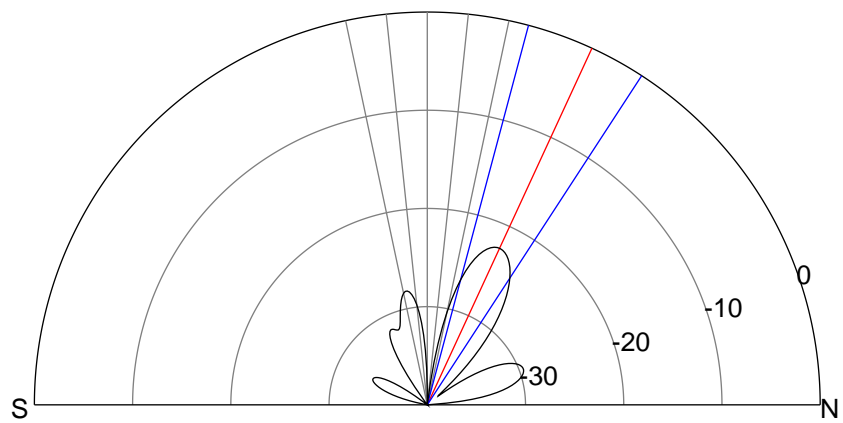
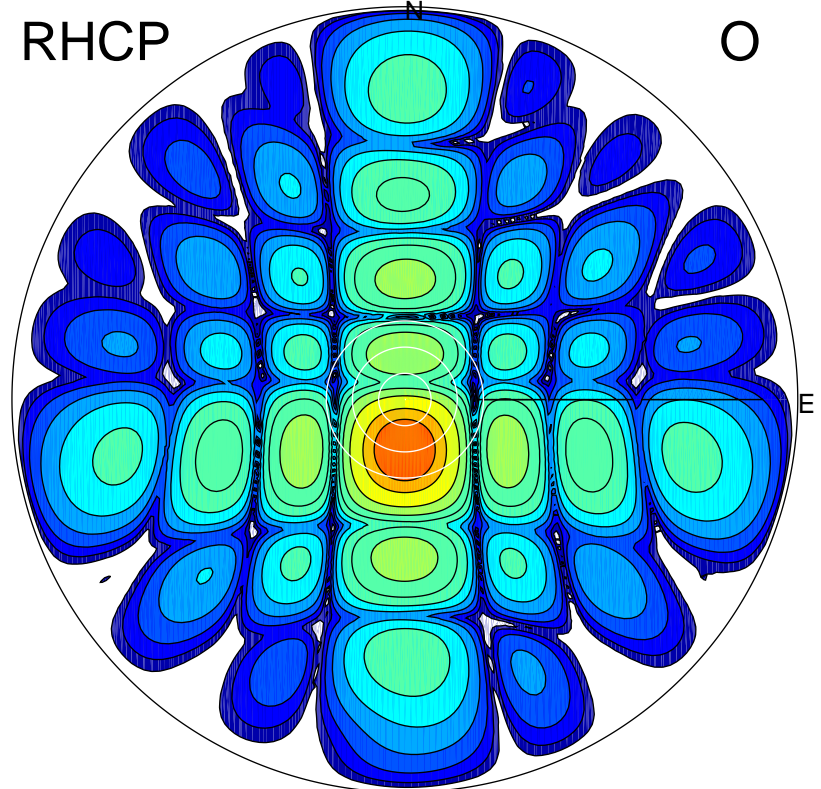
LHCP

X



RHCP

O



ERP 0.9 MW

Peak gain -0.0 dBi at Az 2 Zen 25
RHCP gain 6.3 dBi
N-S peak -0.1 dBi at Zen 24.8
N-S -3 dB beamwidth 18.1 deg.

ERP 152.8 MW

Peak gain 22.3 dBi at Az 180 Zen 11
LHCP gain -5.9 dBi
N-S peak 22.3 dBi at Zen -11.4
N-S -3 dB beamwidth 14.0 deg.