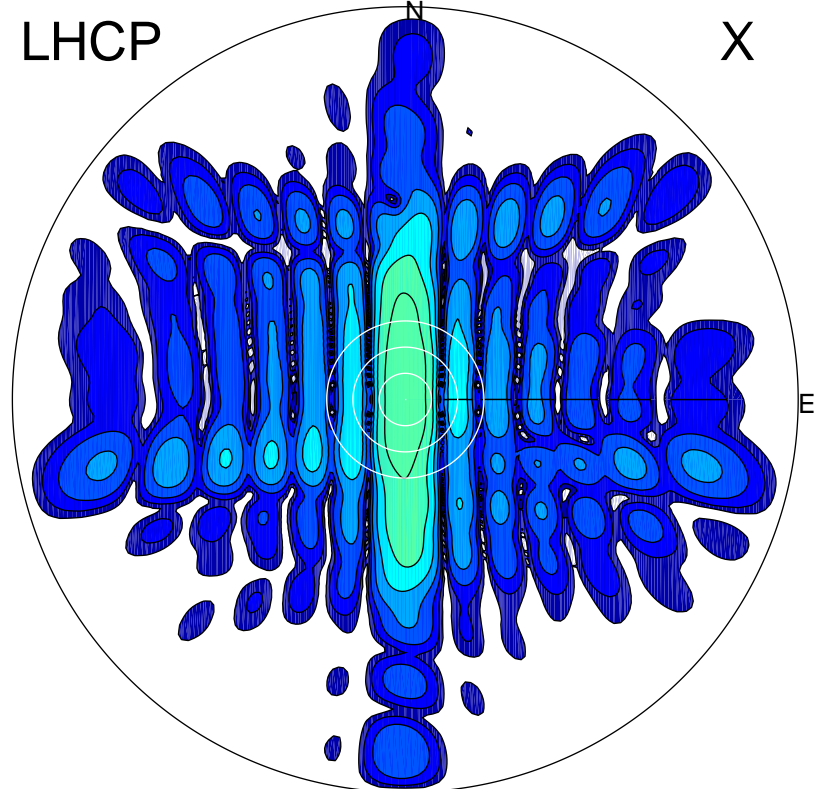


2014-11-24 14:05:52 A1 5.42300000 MHz 872.0 kW

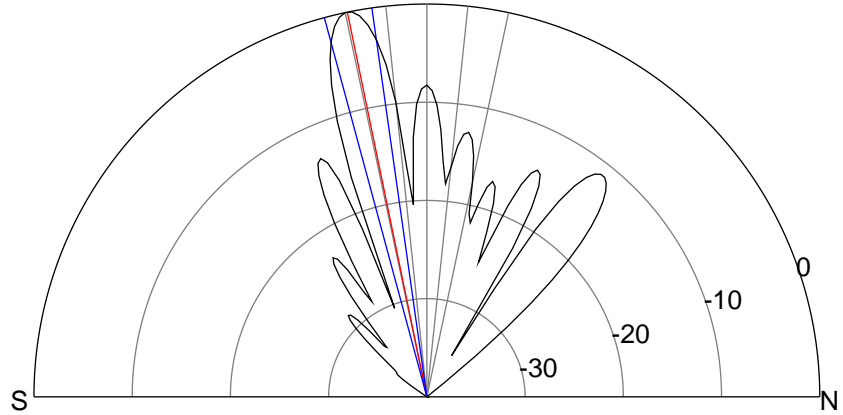
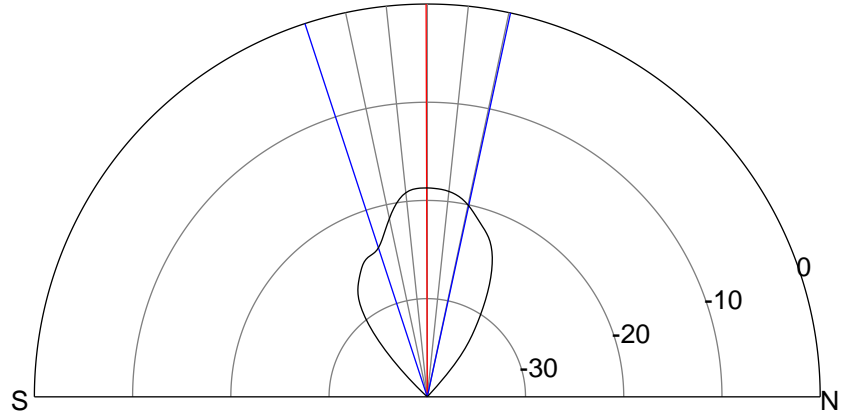
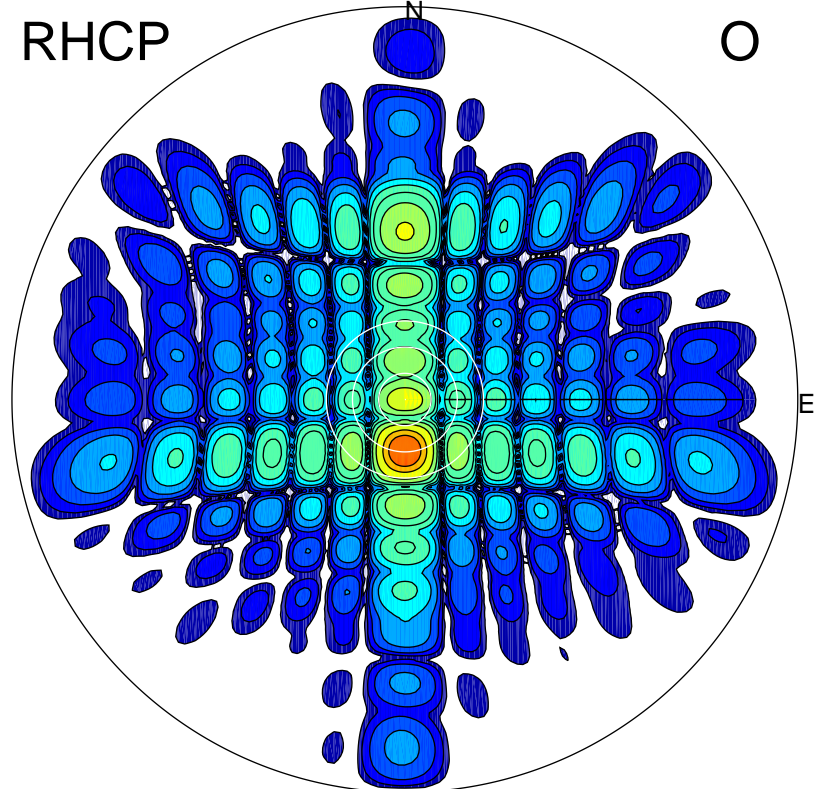
LHCP

X



RHCP

O



### ERP 5.9 MW

Peak gain 8.3 dBi at Az 178 Zen 1  
RHCP gain 18.4 dBi  
N-S peak 8.3 dBi at Zen -0.2  
N-S -3 dB beamwidth 30.4 deg.

### ERP 441.8 MW

Peak gain 27.0 dBi at Az 180 Zen 12  
LHCP gain 5.6 dBi  
N-S peak 27.1 dBi at Zen -11.7  
N-S -3 dB beamwidth 7.1 deg.