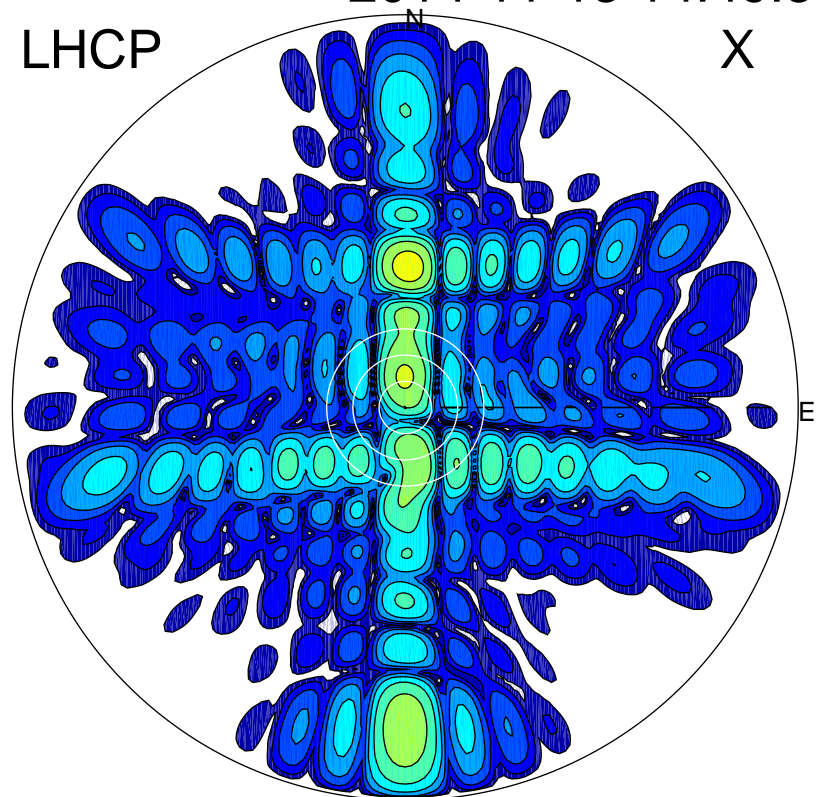


2014-11-13 14:49:31 A1 6.20000000 MHz 124.0 kW

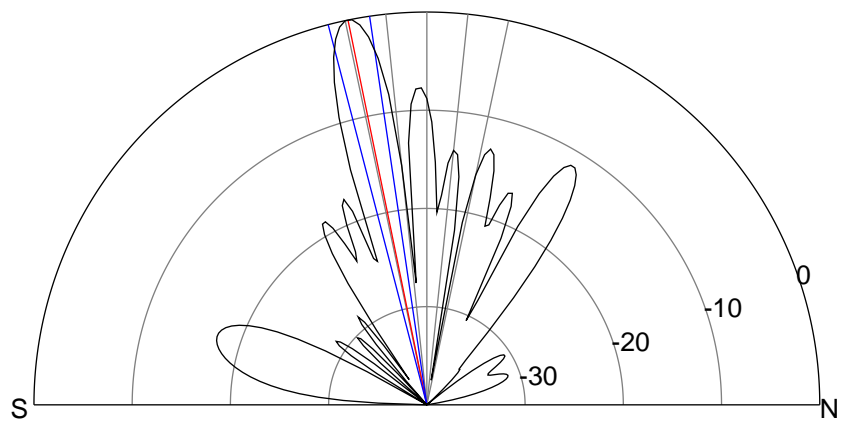
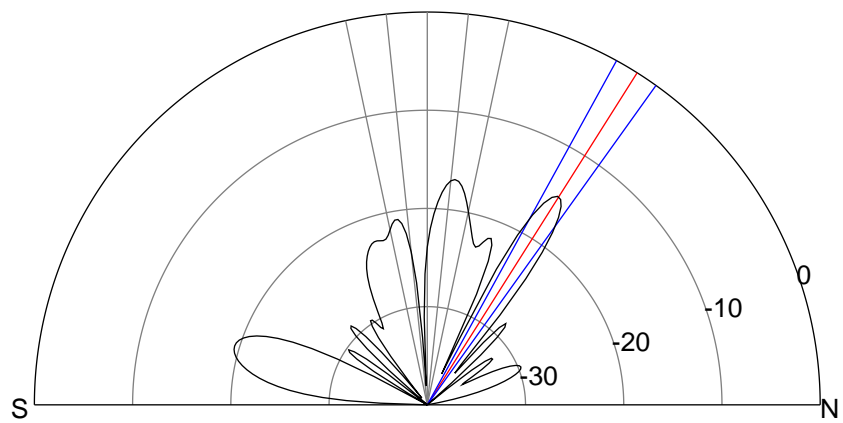
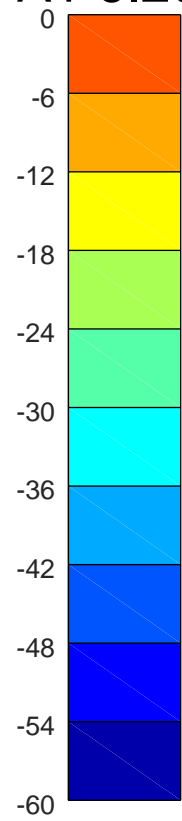
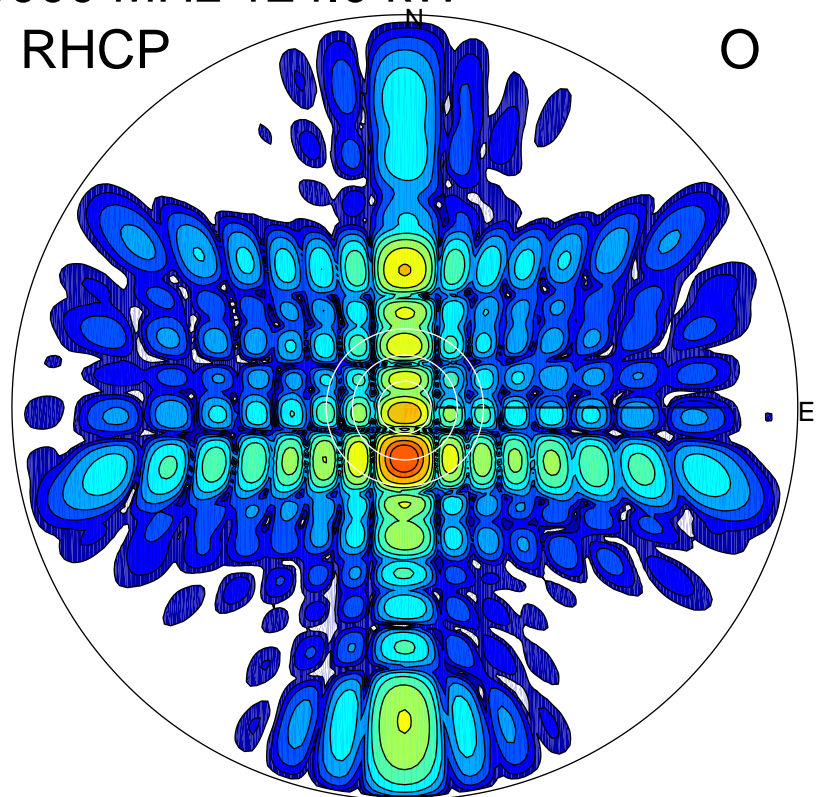
LHCP

X



RHCP

O



### ERP 2.5 MW

Peak gain 13.0 dBi at Az 1 Zen 32  
RHCP gain 16.2 dBi  
N-S peak 12.9 dBi at Zen 32.3  
N-S -3 dB beamwidth 6.8 deg.

### ERP 75.5 MW

Peak gain 27.8 dBi at Az 181 Zen 12  
LHCP gain 5.7 dBi  
N-S peak 27.9 dBi at Zen -11.6  
N-S -3 dB beamwidth 6.2 deg.