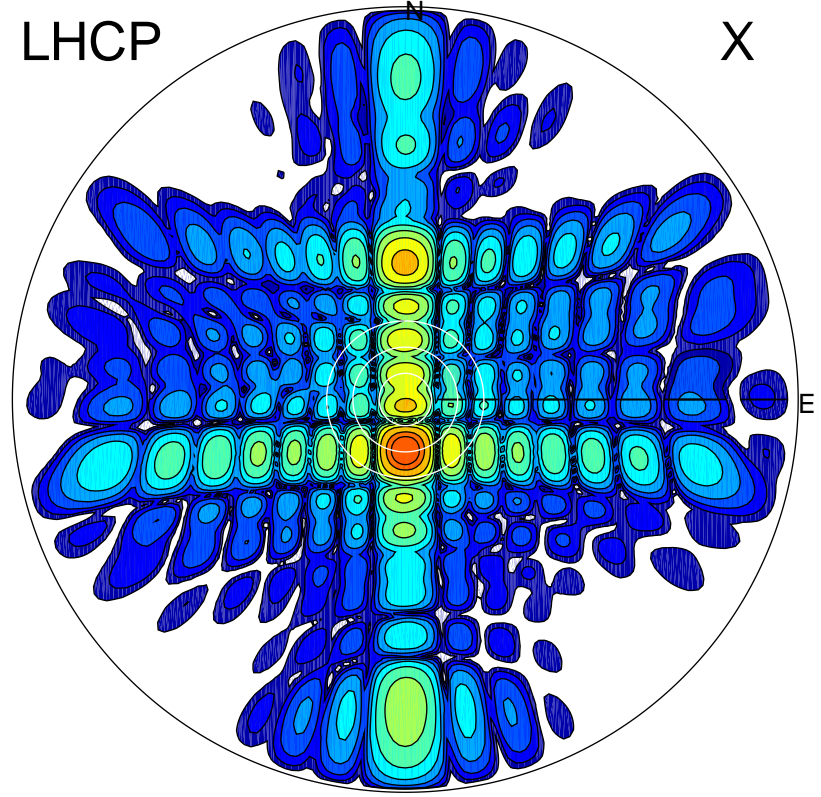


2014-11-13 14:49:05 A1 6.20000000 MHz 116.0 kW

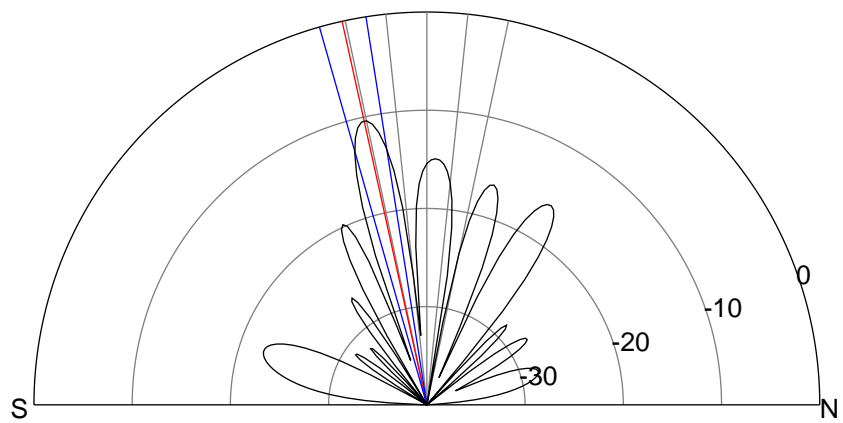
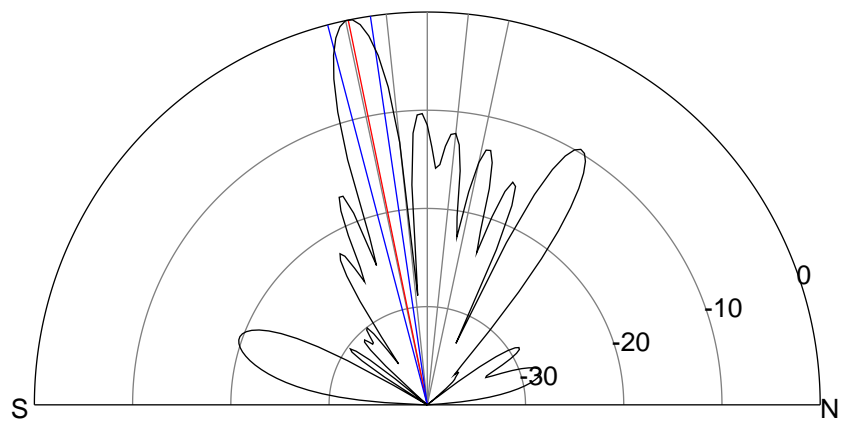
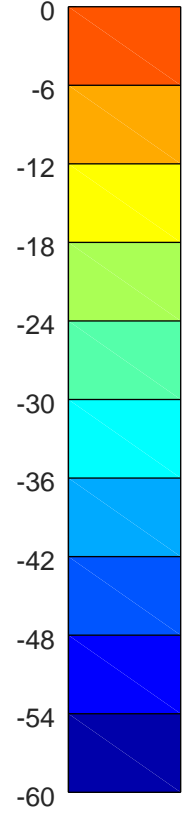
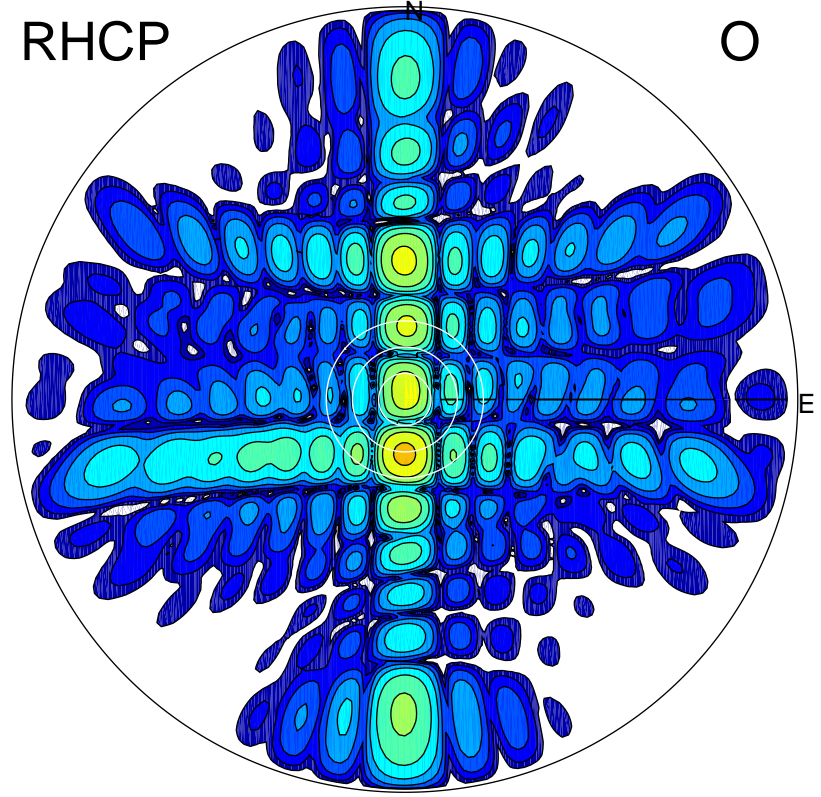
LHCP

X



RHCP

O



ERP 65.5 MW

Peak gain 27.5 dBi at Az 180 Zen 12
RHCP gain 17.1 dBi
N-S peak 27.6 dBi at Zen -11.6
N-S -3 dB beamwidth 6.4 deg.

ERP 5.9 MW

Peak gain 17.1 dBi at Az 181 Zen 12
LHCP gain 27.5 dBi
N-S peak 17.1 dBi at Zen -12.5
N-S -3 dB beamwidth 6.9 deg.