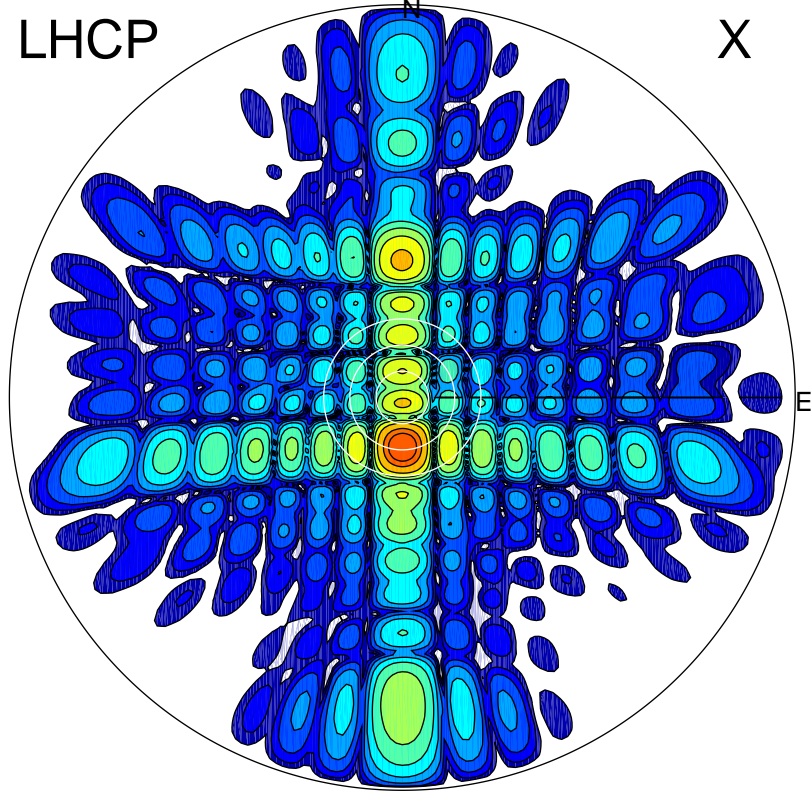


2014-11-13 14:48:27 A1 6.20000000 MHz 895.0 kW

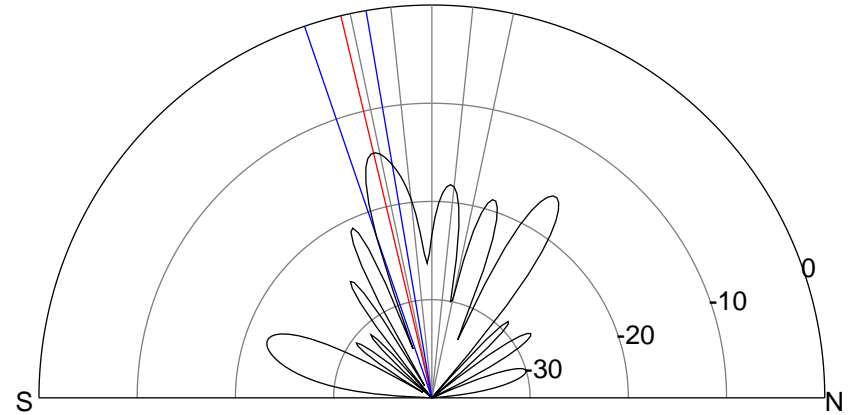
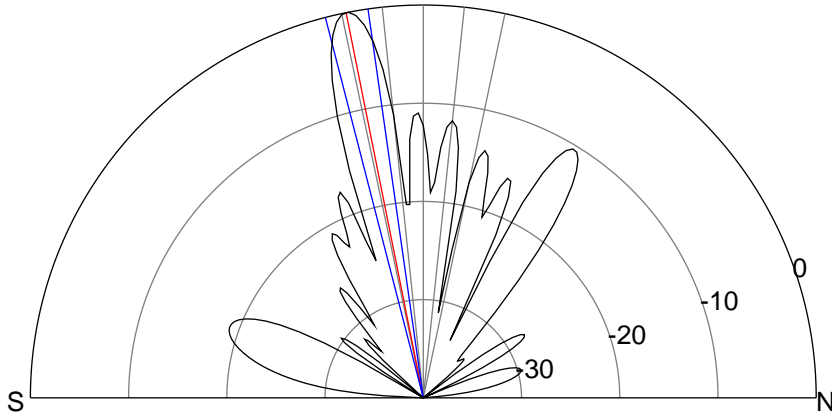
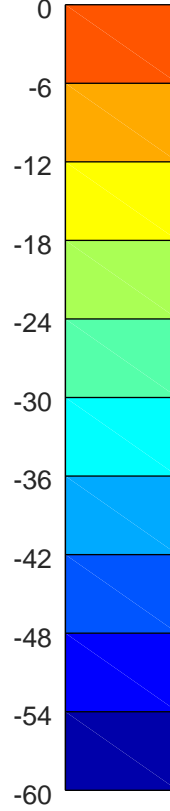
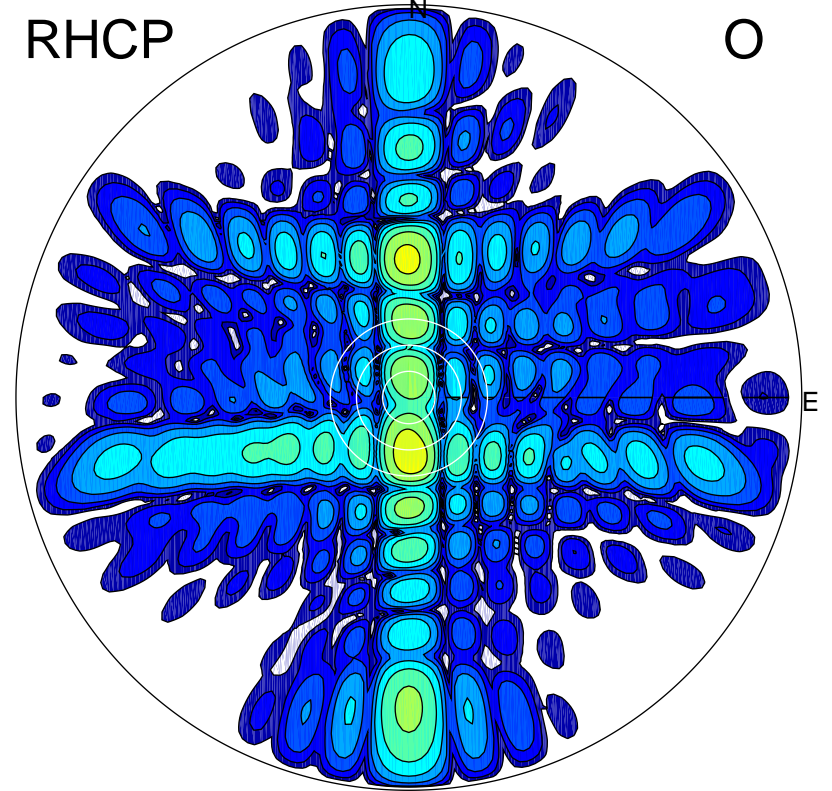
LHCP

X



RHCP

O



**ERP 546.9 MW**

Peak gain 27.9 dBi at Az 180 Zen 11  
RHCP gain 12.8 dBi  
N-S peak 27.9 dBi at Zen -11.3  
N-S -3 dB beamwidth 6.3 deg.

**ERP 20.1 MW**

Peak gain 13.5 dBi at Az 178 Zen 13  
LHCP gain 27.1 dBi  
N-S peak 13.5 dBi at Zen -13.4  
N-S -3 dB beamwidth 9.3 deg.