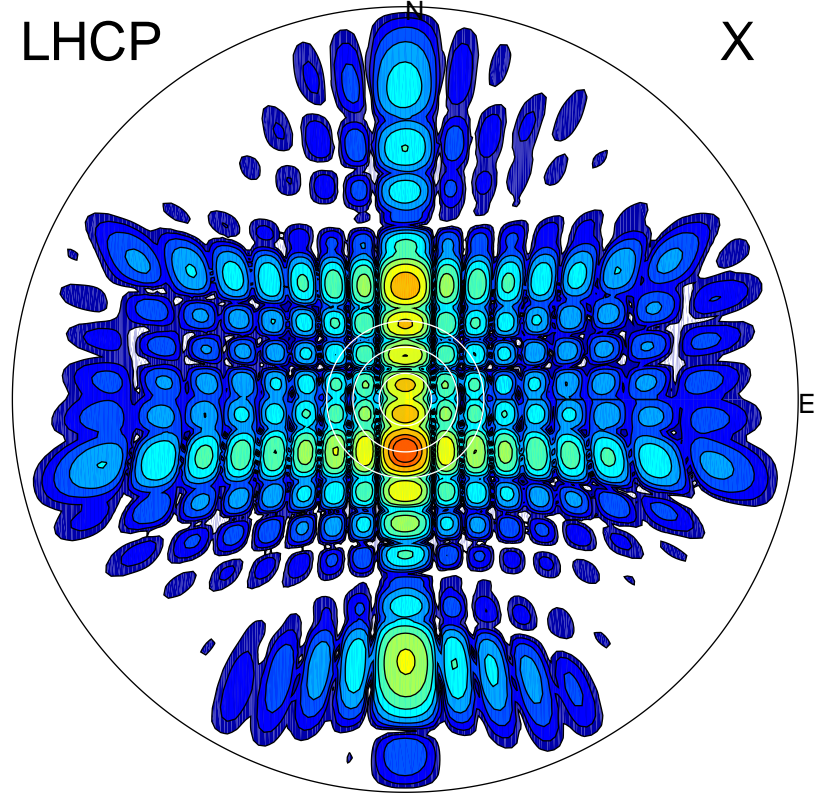


2014-11-13 14:06:16 A1 7.10000000 MHz 768.0 kW

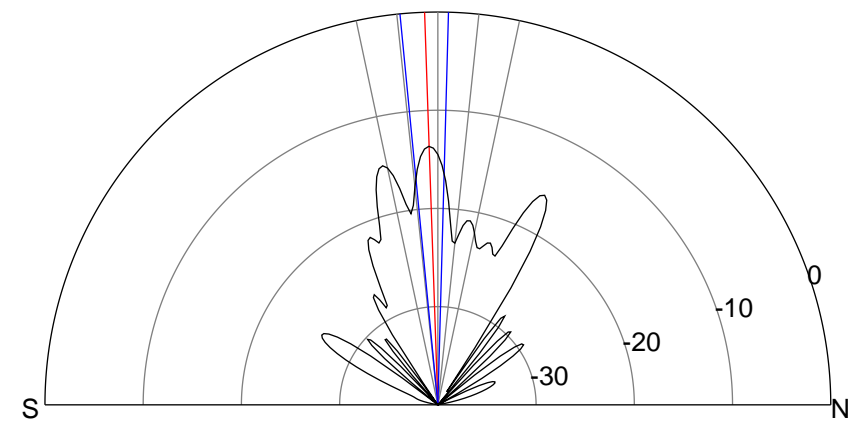
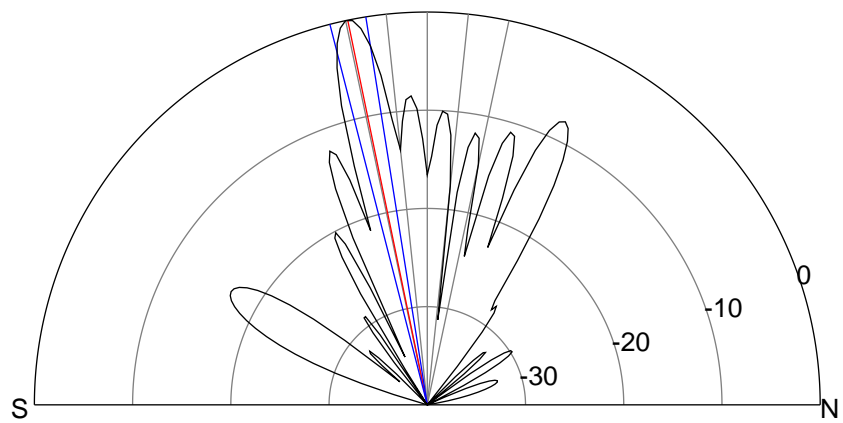
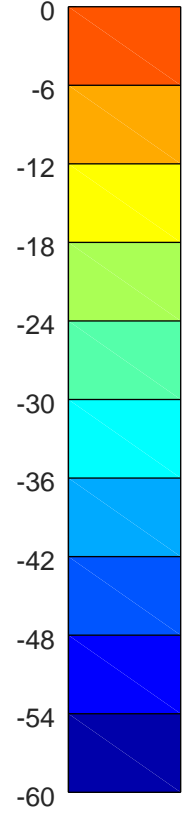
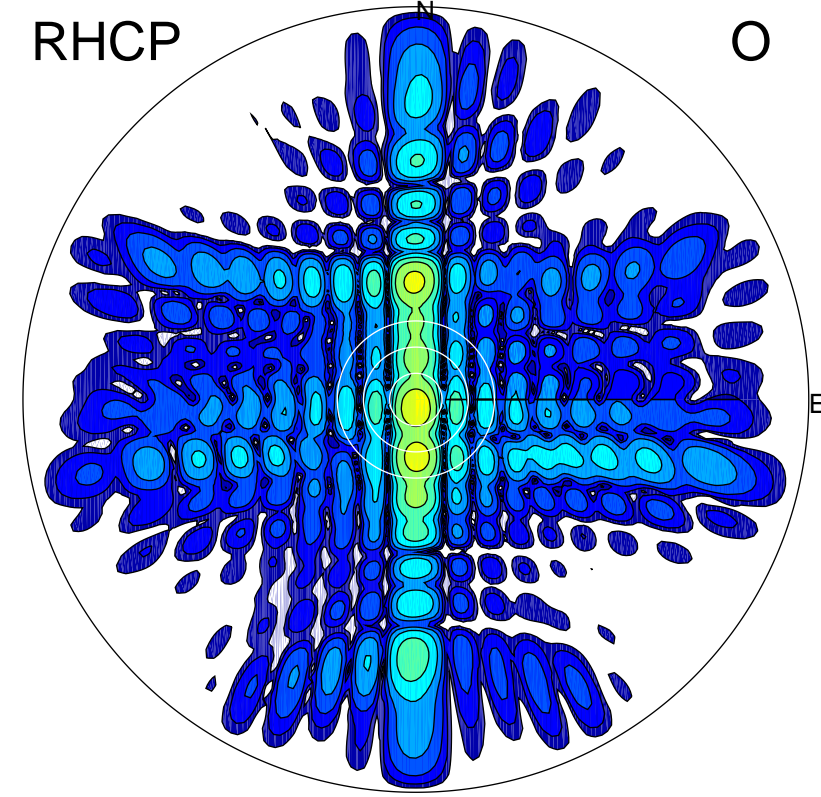
LHCP

X



RHCP

O



### ERP 537.4 MW

Peak gain 28.4 dBi at Az 180 Zen 12  
RHCP gain 13.1 dBi  
N-S peak 28.5 dBi at Zen -11.7  
N-S -3 dB beamwidth 5.4 deg.

### ERP 23.2 MW

Peak gain 14.8 dBi at Az 178 Zen 2  
LHCP gain 18.6 dBi  
N-S peak 14.8 dBi at Zen -1.9  
N-S -3 dB beamwidth 7.1 deg.