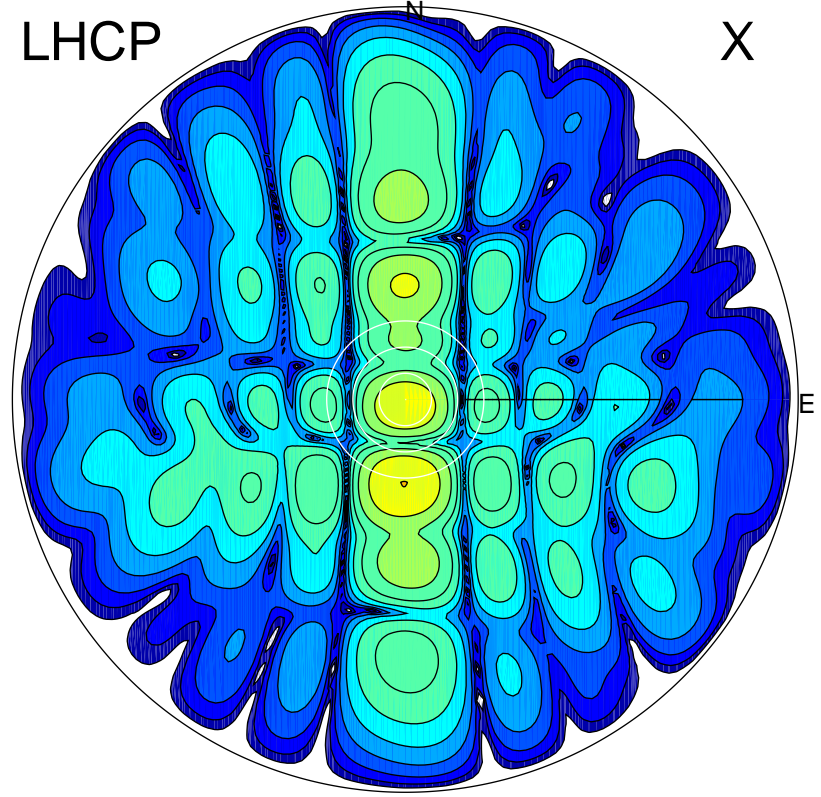


2014-03-11 13:17:55 A3 7.00000000 MHz 462.0 kW

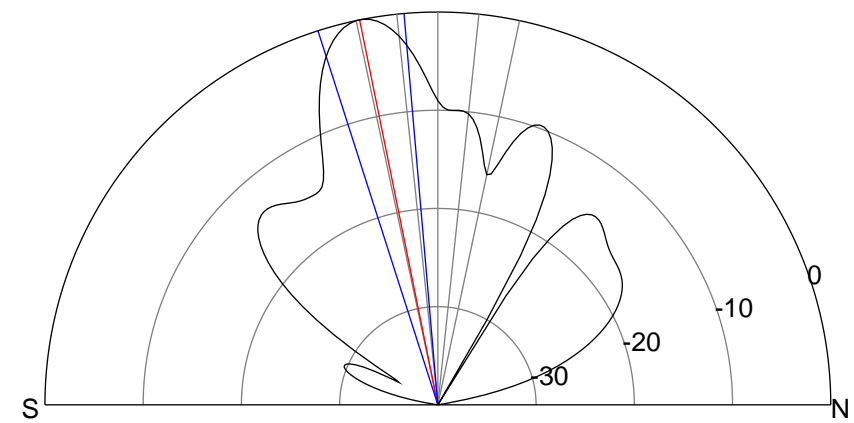
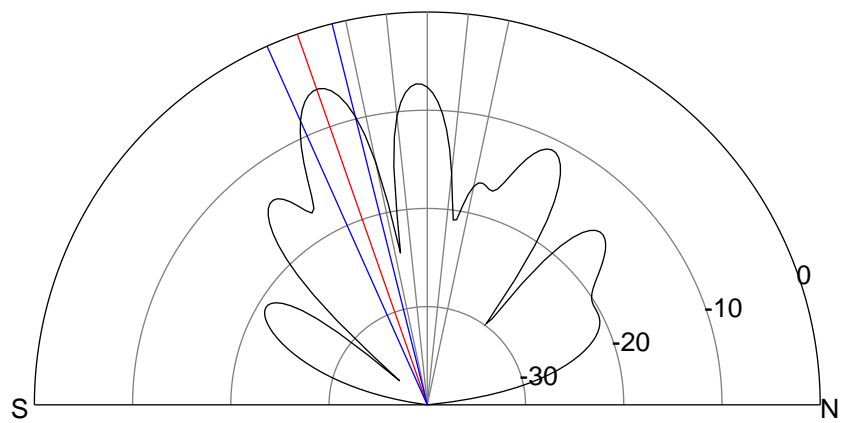
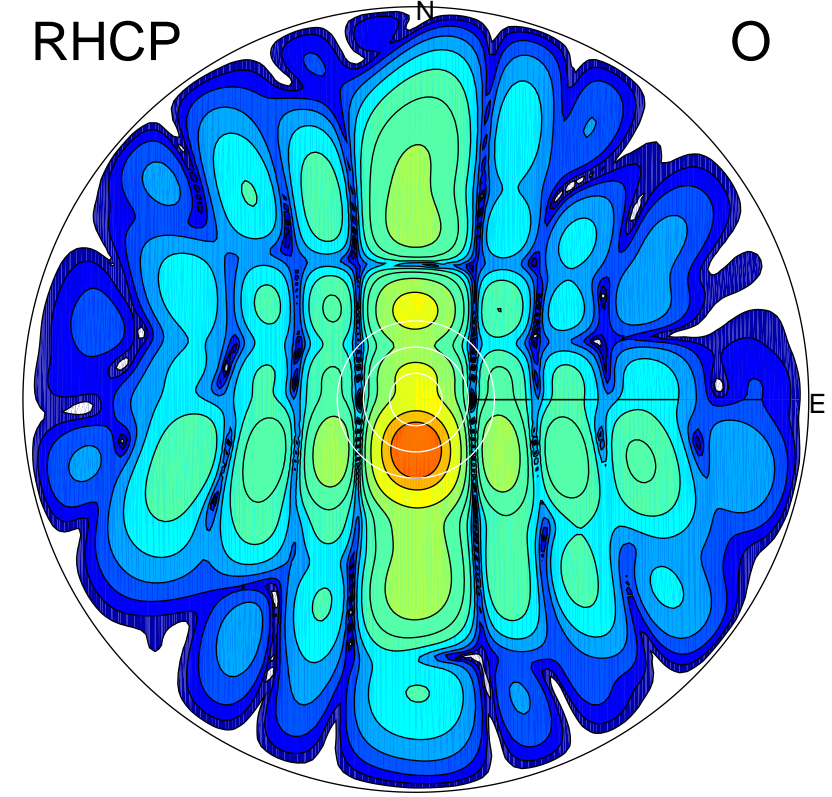
LHCP

X



RHCP

O



ERP 16.0 MW

Peak gain 15.4 dBi at Az 181 Zen 19
RHCP gain 17.4 dBi
N-S peak 15.4 dBi at Zen -19.3
N-S -3 dB beamwidth 10.0 deg.

ERP 63.1 MW

Peak gain 21.4 dBi at Az 179 Zen 11
LHCP gain 2.1 dBi
N-S peak 21.4 dBi at Zen -11.5
N-S -3 dB beamwidth 12.8 deg.