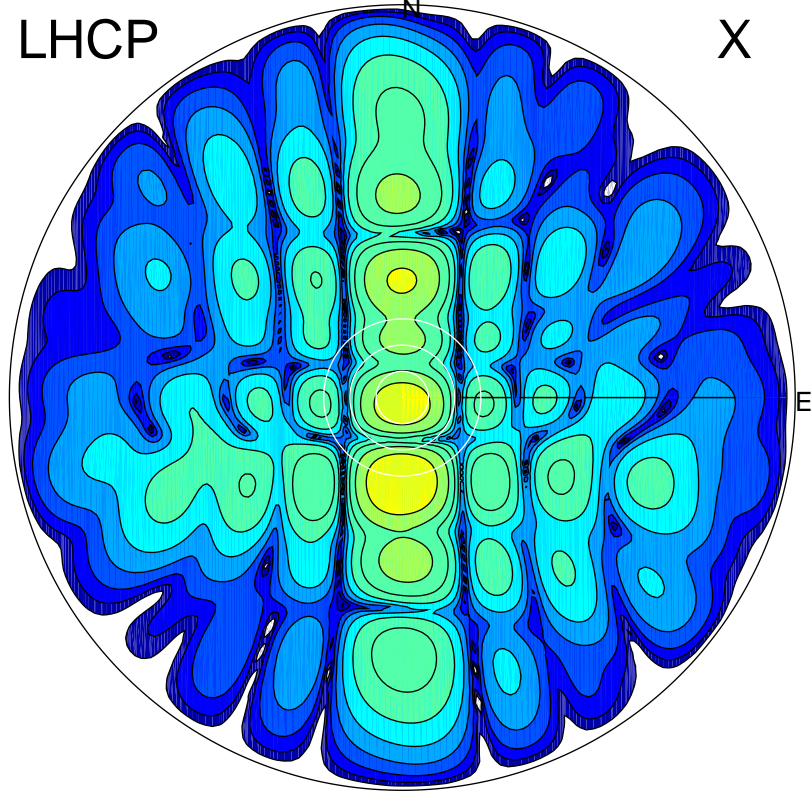


2014-03-11 13:15:05 A3 6.95233600 MHz 466.0 kW

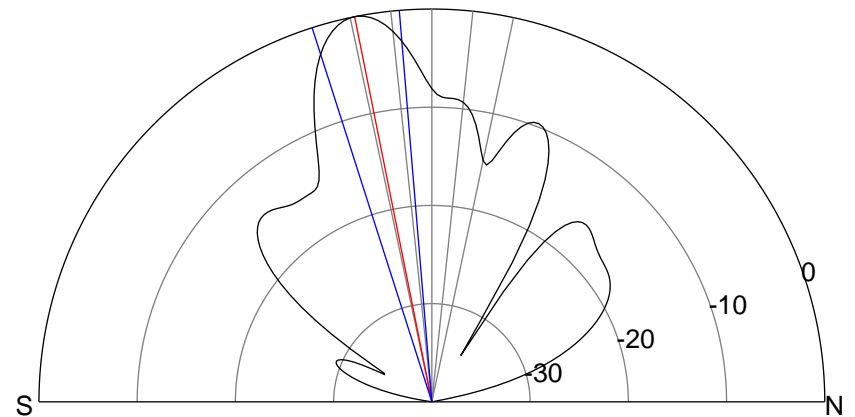
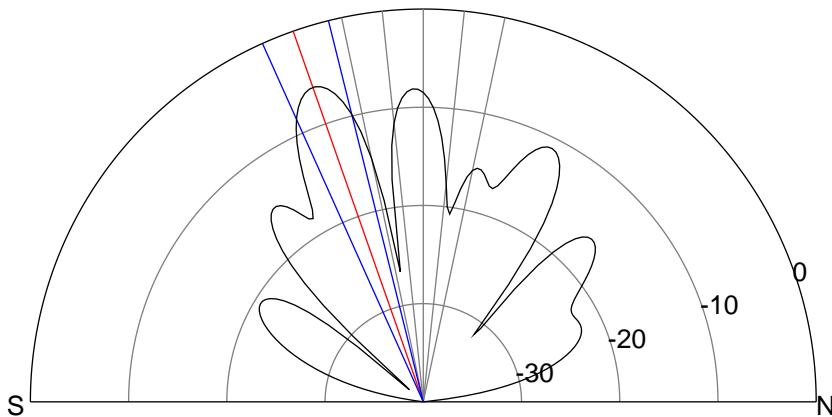
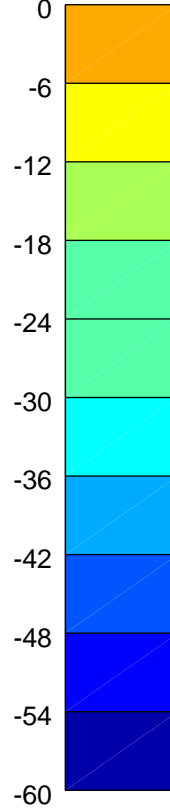
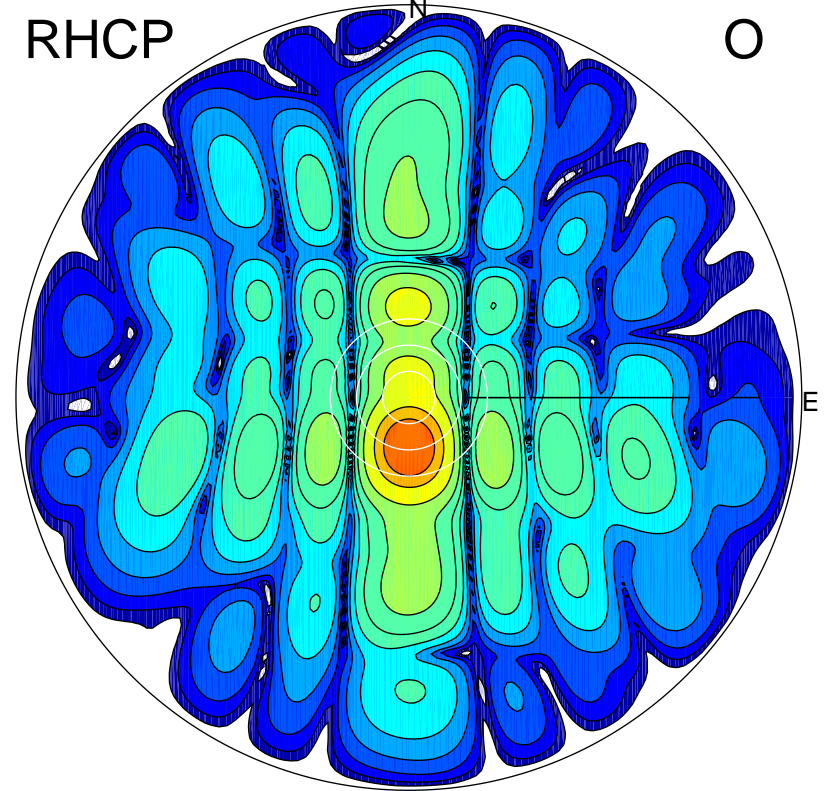
LHCP

X



RHCP

O



### ERP 15.9 MW

Peak gain 15.3 dBi at Az 180 Zen 19  
RHCP gain 17.3 dBi  
N-S peak 15.3 dBi at Zen -19.3  
N-S -3 dB beamwidth 10.2 deg.

### ERP 64.3 MW

Peak gain 21.4 dBi at Az 180 Zen 11  
LHCP gain 2.3 dBi  
N-S peak 21.4 dBi at Zen -11.3  
N-S -3 dB beamwidth 13.0 deg.