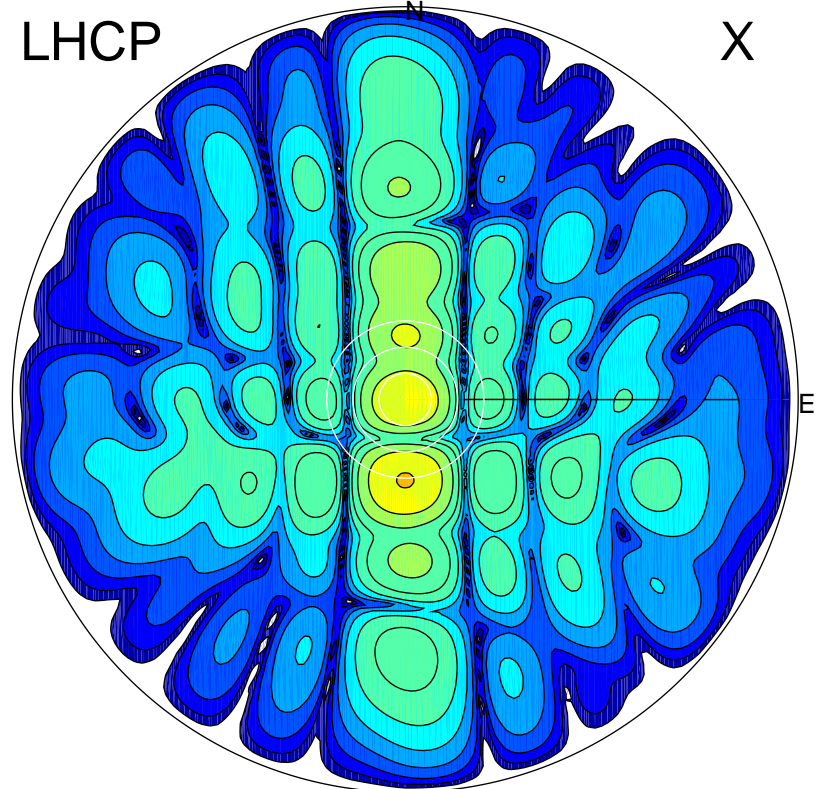


2014-03-11 13:09:55 A3 6.86542100 MHz 464.0 kW

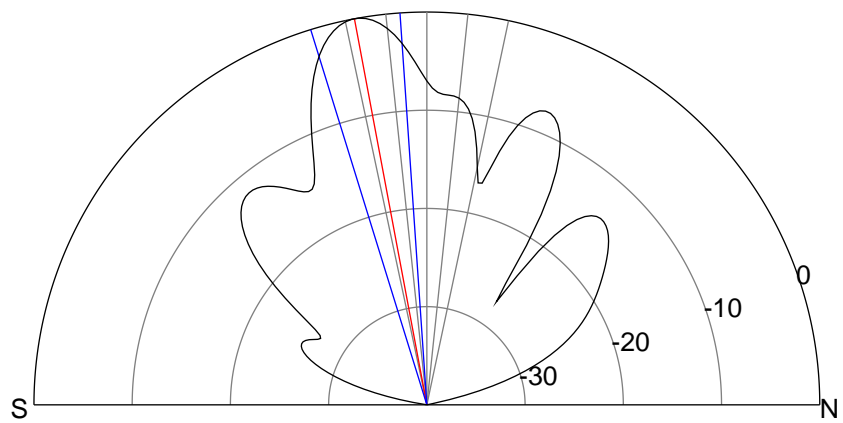
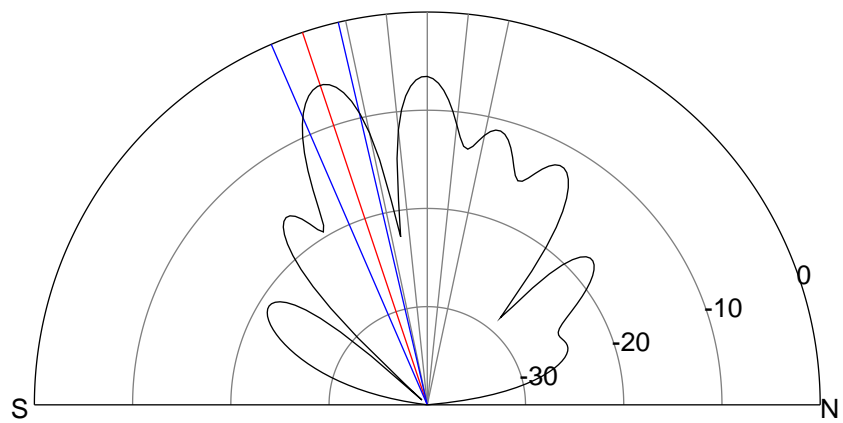
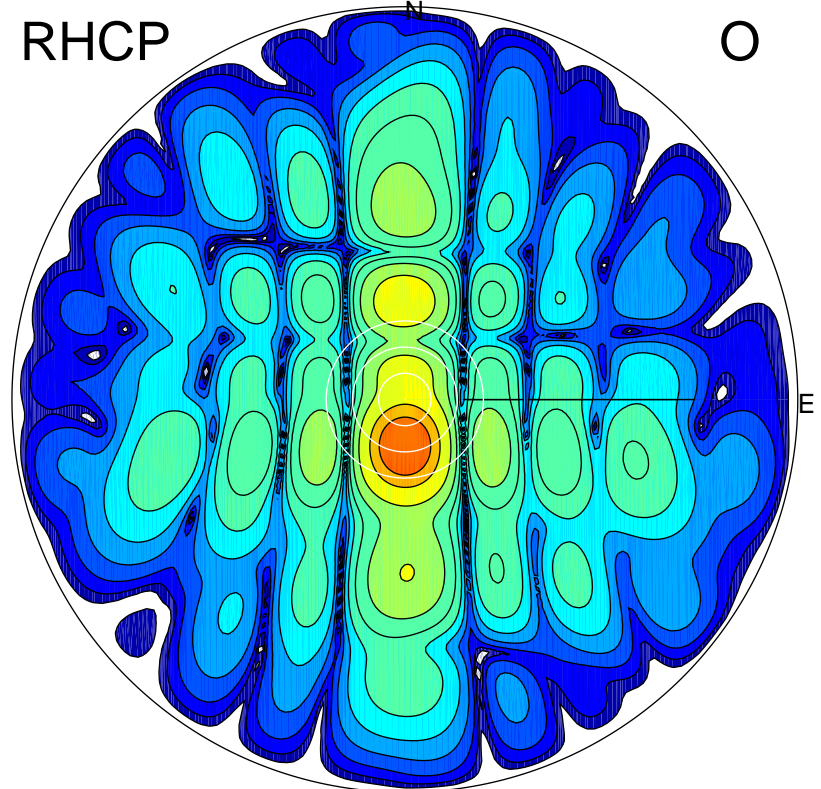
LHCP

X



RHCP

O



ERP 15.2 MW

Peak gain 15.2 dBi at Az 180 Zen 19
RHCP gain 16.2 dBi
N-S peak 15.2 dBi at Zen -18.5
N-S -3 dB beamwidth 10.3 deg.

ERP 56.5 MW

Peak gain 20.9 dBi at Az 180 Zen 11
LHCP gain 6.3 dBi
N-S peak 20.9 dBi at Zen -10.6
N-S -3 dB beamwidth 13.3 deg.