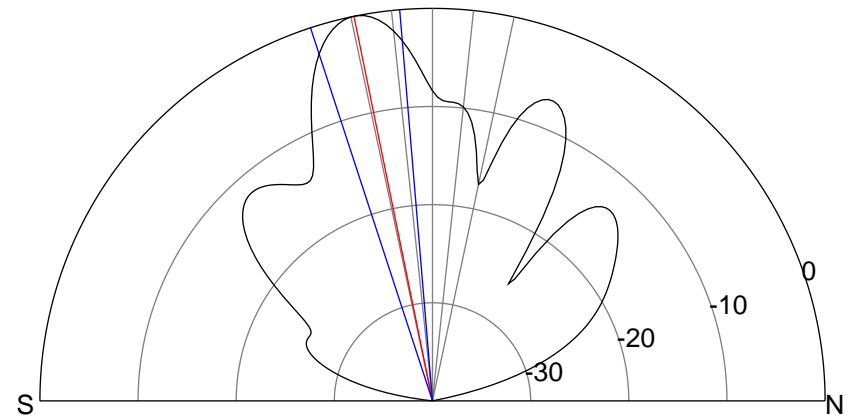
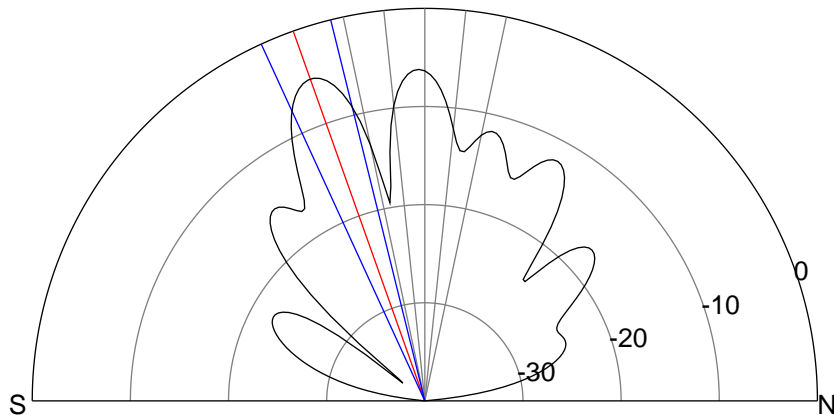
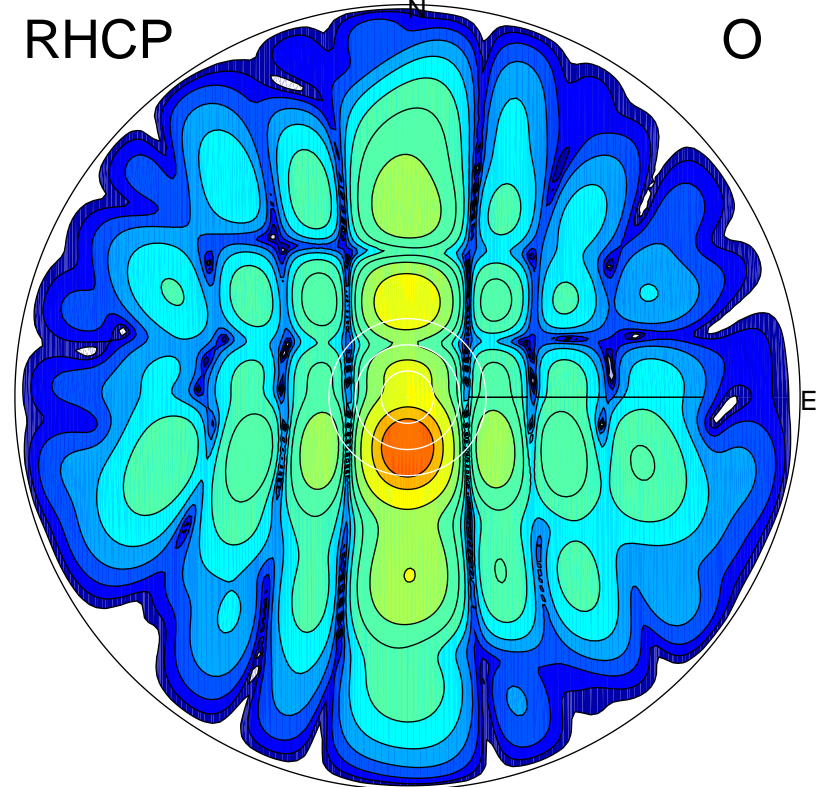
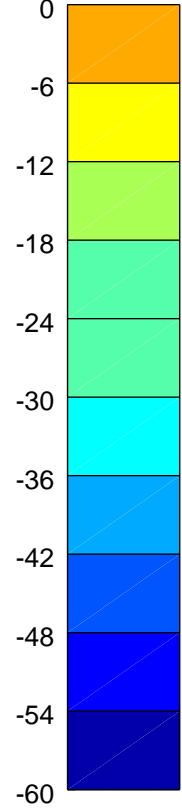
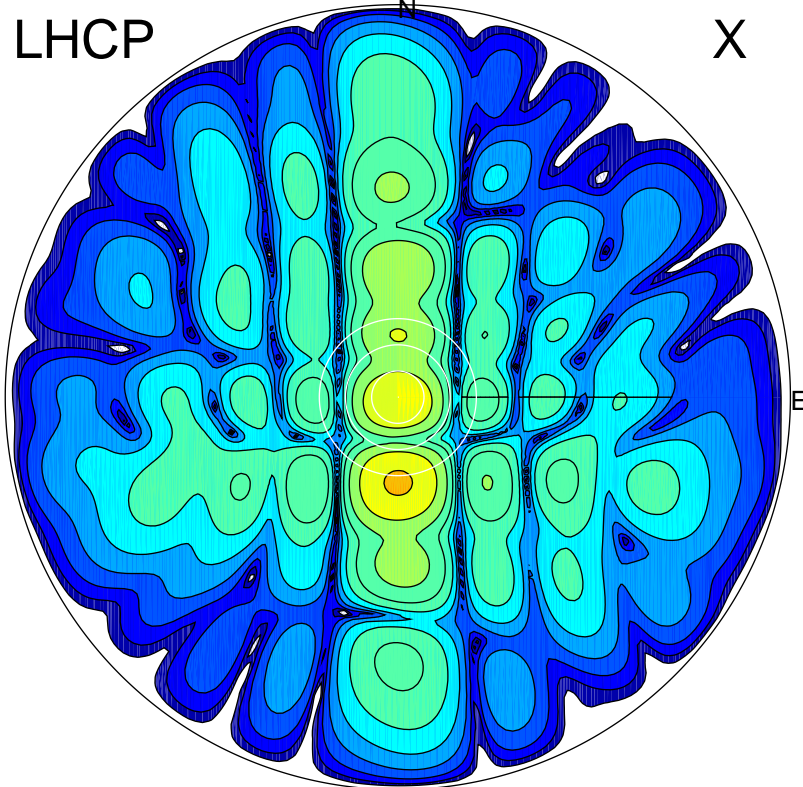


2014-03-11 13:04:55 A3 6.78130800 MHz 460.0 kW



ERP 16.0 MW

Peak gain 15.4 dBi at Az 180 Zen 20
RHCP gain 16.0 dBi
N-S peak 15.4 dBi at Zen -19.6
N-S -3 dB beamwidth 10.8 deg.

ERP 53.1 MW

Peak gain 20.6 dBi at Az 179 Zen 12
LHCP gain 7.3 dBi
N-S peak 20.6 dBi at Zen -11.5
N-S -3 dB beamwidth 13.3 deg.